

# CERTIFICATE OF LOCATION OF GOVERNMENT CORNER

County of Anoka

State of Minnesota

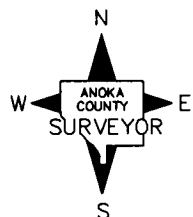
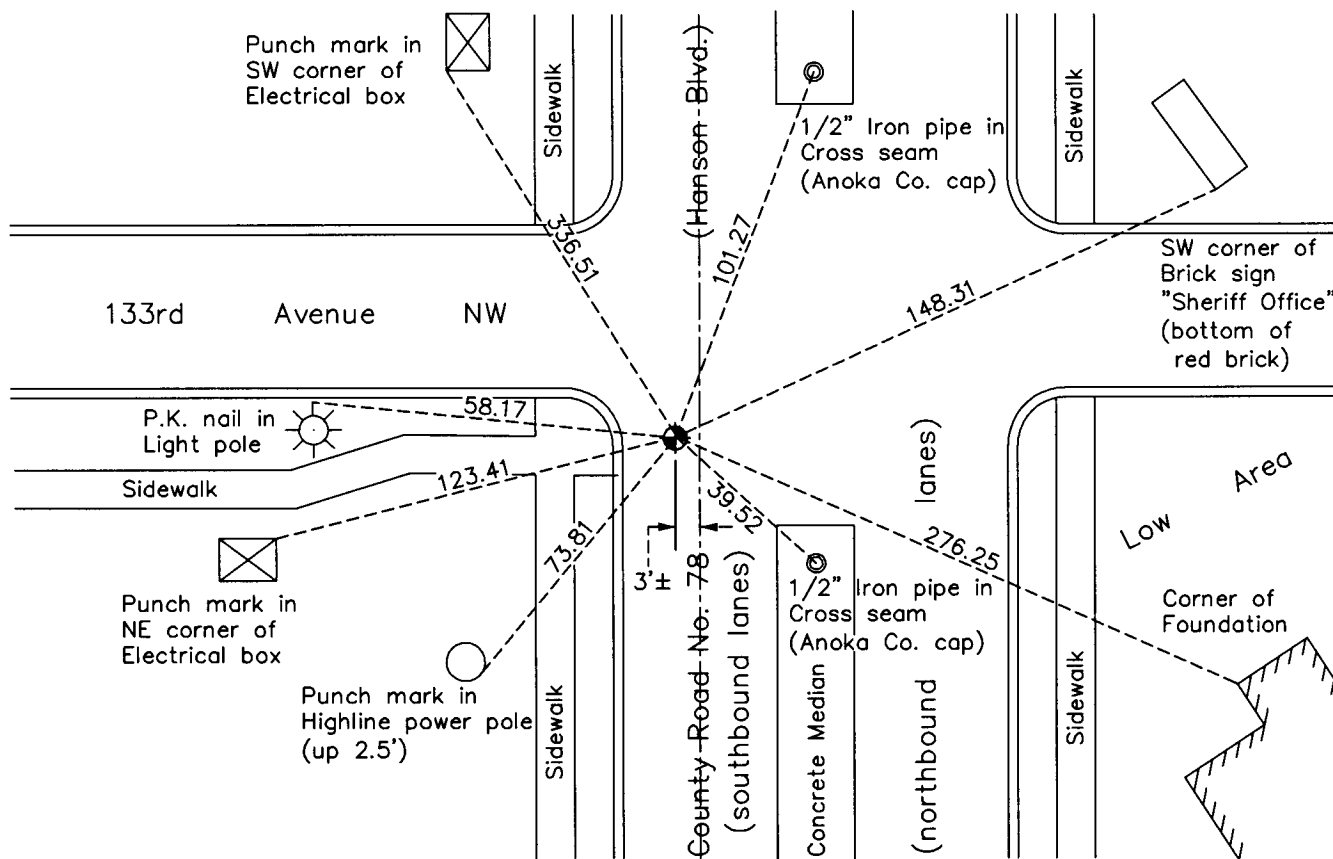
## Northwest Corner of Sec. 2 Township 31 Range 24

On the 14th day of April, 1959, the described corner was evidenced by an iron pipe

and to perpetuate the location of said corner, at the exact location thereof, a permanent marker was placed consisting of a cast iron monument

AND on the 24th day of March, 2010, said permanent marker was found flush with  
blacktop and the ties were updated

Updated reference ties are as shown below.



Revision Date  
4/16/10

N.A.D. 1983 Coordinates  
 (1996 Adjustment)

County Project Coordinates	
Northing	164455.6126
Easting	489751.1686
Date	6/30/00

I hereby certify that this United States public land survey monument record is correct and complete to the best of my knowledge and belief.

*Larry D. Hoium* Date 4/16/10

Larry D. Hoium, Anoka County Surveyor  
 Minnesota License Number 18165

# HISTORY OF GOVERNMENT CORNER

Page No. 5

County of Anoka

State of Minnesota

## Northwest Corner of Sec. 2 Township 31 Range 24

### **CORNER HISTORY:**

April 14, 1959 - Found 1 1/2" X 5.5' long iron pipe bent over 0.06' North and 0.23' East of location of pipe bottom. Wayne Ridge, former County Surveyor, said the pipe was the corner and Henry Otis, owner of a part of the NW1/4 of the NW1/4 of Section 1, said the iron had been used as the corner for as long as he can remember (40 years). Also found rotted wood stakes beside iron. Replaced iron pipe with cast iron monument set down 14" and established ties to monument.

June 18, 1964 - Found cast iron monument and updated ties.

July 22, 1966 - Found cast iron monument down 0.8'± and updated ties.

July 22, 1970 - Found cast iron monument down 0.5'± with 1/2" iron pipe flush on south side and updated ties.

June 28, 1972 - Found cast iron monument and updated ties.

July 13, 1973 - Set cast iron monument flush with surface after road construction using construction ties. Set P.K. nails 2.00' north and east.

July 1, 1974 - Found cast iron monument and updated ties.

June 14, 1977 - Found cast iron monument and updated ties.

July 27, 1978 - Loosened top of cast iron monument prior to overlaying road surface and updated ties.

September 25, 1978 - Added spacer/s and replaced top of cast iron monument. Monument is flush with surface. Updated ties.

August 9, 1994 - Found cast iron monument and updated ties.

January 9, 1995 - Found cast iron monument and updated ties.

January 10, 1997 - Found cast iron monument and updated ties.

June 30, 2000 - Found cast iron monument and established NAD 1983 (1996 Adjustment) Anoka County Project Coordinates by Static GPS methods. Updated ties.

March 24, 2010 - Found cast iron monument flush with blacktop and updated ties.