

CERTIFICATE OF LOCATION OF GOVERNMENT CORNER

County of Anoka

State of Minnesota

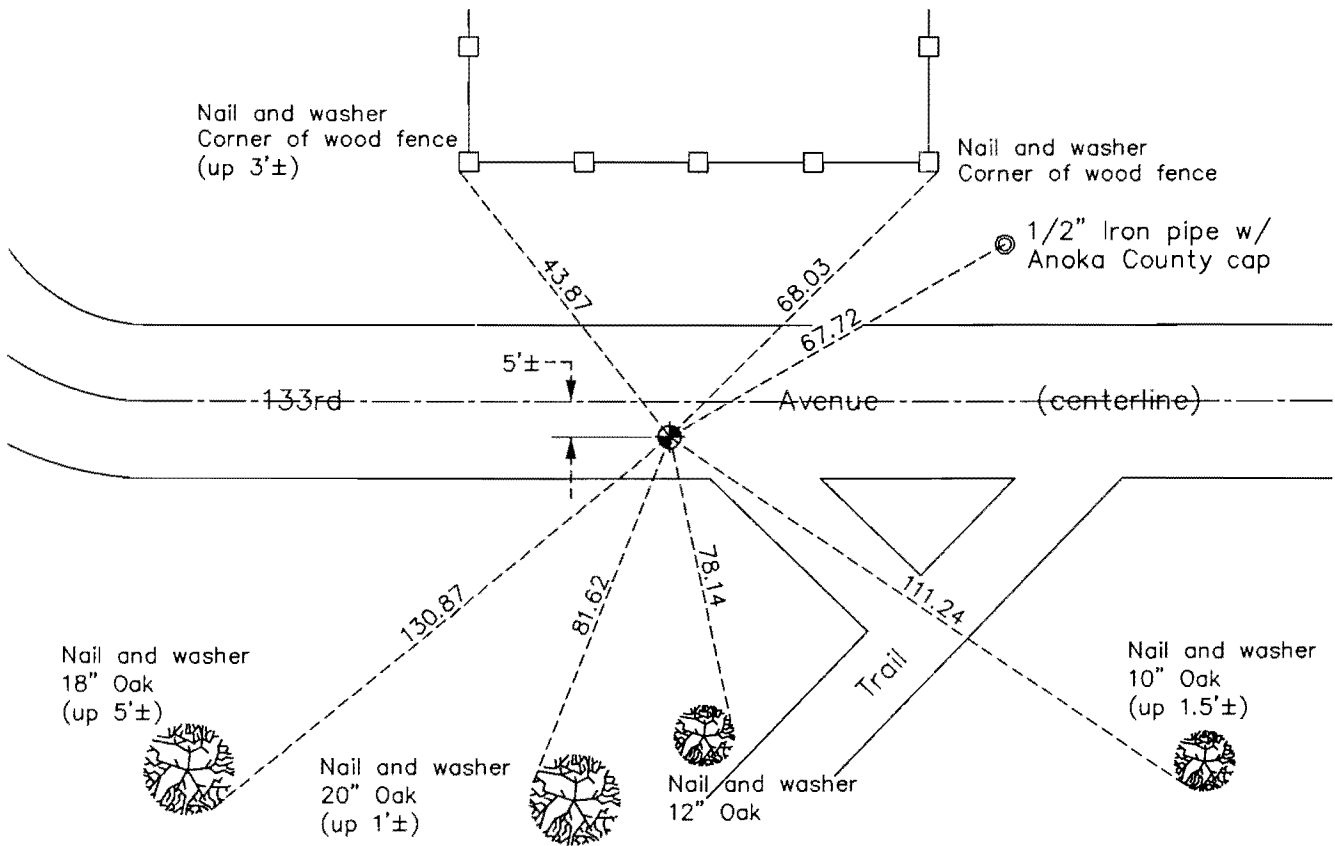
North 1/4 Corner of Sec. 3 Township 31 Range 24

On the 18th day of June, 1964, the described corner was evidenced by a 2" iron pipe found using ties by N.C. Hoium

and to perpetuate the location of said corner, at the exact location thereof, a permanent marker was placed consisting of a cast iron monument

AND on the ___ day of July, 2012, said permanent marker was reset flush with the surface after road construction and the ties were updated

Updated reference ties are as shown below.



N

S

Revision Date

12/18/12

N.A.D. 1983 Coordinates
(1996 Adjustment)

County Project Coordinates	
Northing	164533.9284
Easting	487105.5721
Date	7/19/00

I hereby certify that this United States public land survey monument record is correct and complete to the best of my knowledge and belief.

Larry D. Hoium Date 12/18/12

Larry D. Hoium, Anoka County Surveyor

Minnesota License Number 18165

HISTORY OF GOVERNMENT CORNER

Page No. 6

County of Anoka

State of Minnesota

North 1/4 Corner of Sec. 3 Township 31 Range 24

CORNER HISTORY:

February 8, 1962 - N.C. Hoium and Associates found 2" iron pipe by an 8" fence post. Established ties to monument.

June 18, 1964 - Found 2" iron pipe flush with ground with a 6" wood post up 3' on east side using ties by N.C. Hoium. Updated ties.

July 22, 1966 - Found 2" iron pipe and updated ties.

August 4, 1970 - Found 2" iron pipe and updated ties.

July 1, 1974 - Found 2" iron pipe and updated ties.

June 14, 1977 - Found 2" iron pipe and updated ties.

October 8, 1980 - Replaced 2" iron pipe with a cast iron monument set flush with surface and set sign and post on north side. Old ties checked but were grown over. Replaced with new ties.

October 10, 1986 - Set construction (transit) ties and removed cast iron monument prior to construction. Set iron pipe in place of monument.

October 9, 1987 - Set cast iron monument after road construction using construction ties. Corner is 5'± south of centerline. Updated ties.

August 14, 1990 - Found cast iron monument and updated ties.

April 12, 1992 - Found cast iron monument and updated ties.

August 17, 1994 - Found cast iron monument and updated ties.

May 2, 1997 - Found cast iron monument and updated ties.

July 19, 2000 - Found cast iron monument and established NAD 1983 (1996 Adjustment) Anoka County Project Coordinates by Static GPS methods. Updated ties.

March 15, 2010 - Found cast iron monument down 0.1' and updated ties.

May 17, 2012 - Set construction ties, updated ties, verified location using VRS and removed cast iron monument prior to road construction.

July 2012 - Set cast iron monument flush with surface after road construction using construction ties. Verified location of corner by Static GPS methods.