

# CERTIFICATE OF LOCATION OF GOVERNMENT CORNER

County of Anoka

State of Minnesota

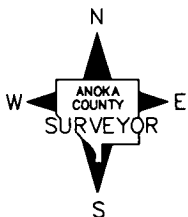
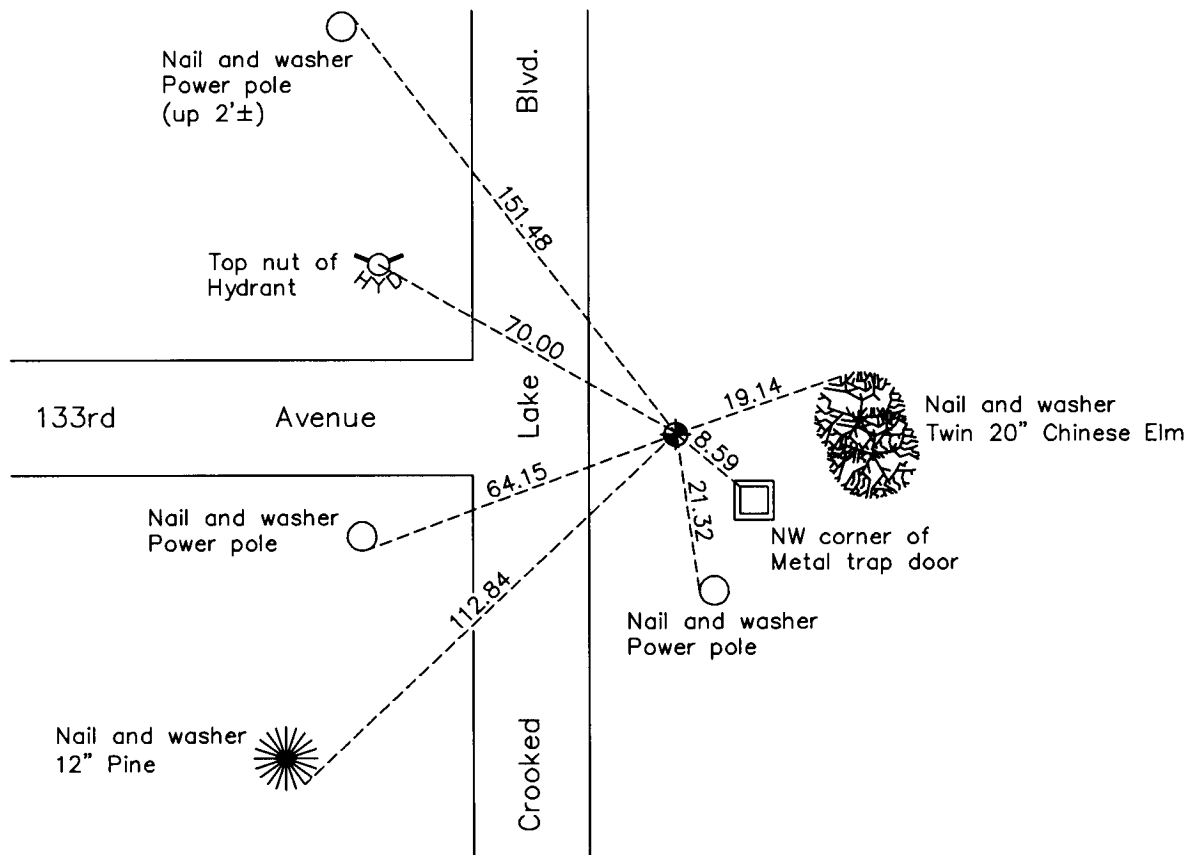
## North $\frac{1}{4}$ Corner of Sec. 4 Township 31 Range 24

On the 28th day of March, 1963, the described corner was evidenced by a granite monument

and to perpetuate the location of said corner, at the exact location thereof, a permanent marker was placed consisting of a cast iron monument

AND on the 8th day of February, 2010, said permanent marker was found and the ties were updated

Updated reference ties are as shown below.



Revision Date

4/19/10

N.A.D. 1983 Coordinates  
(1996 Adjustment)

County Project Coordinates	
Northing	164583.5680
Easting	481826.6876
Date	7/19/00

I hereby certify that this United States public land survey monument record is correct and complete to the best of my knowledge and belief.

*Larry D. Hoium* Date 4/19/10

Larry D. Hoium, Anoka County Surveyor

Minnesota License Number 18165

# HISTORY OF GOVERNMENT CORNER

Page No. 7

County of Anoka

State of Minnesota

North 1/4 Corner of Sec. 4 Township 31 Range 24

## **CORNER HISTORY:**

August 18, 1944 - Cartwright found granite monument. Established ties to monument.

July 7, 1958 - Anoka County Highway Department found granite monument and updated ties.

March 29, 1963 - Found granite monument down 1.3' and updated ties.

July 28, 1966 - Found granite monument and updated ties.

June 17, 1970 - Found granite monument down 0.6' with a 1/2" iron pipe on north side and updated ties.

April 23, 1974 - Replaced granite monument, previously removed for construction, with a cast iron monument set flush with surface. Updated ties.

July 1, 1974 - Found cast iron monument and updated ties.

August 21, 1975 - Found cast iron monument and added additional ties for construction.

May 4, 1977 - Set cast iron monument flush with surface after road construction using ties.

August 20, 1990 - Found cast iron monument and updated ties.

August 30, 1990 - Removed cast iron monument prior to construction.

November 1, 1990 - Set cast iron monument after sewer construction.

August 17, 1994 - Found cast iron monument and updated ties.

July 19, 2000 - Found cast iron monument and established NAD 1983 ( 1996 Adjustment) Anoka County Project Coordinates by Static GPS methods. Updated ties.

February 8, 2010 - Found cast iron monument and updated ties