

CERTIFICATE OF LOCATION OF GOVERNMENT CORNER

County of Anoka

State of Minnesota

Witness Corner of Sec. 4 Township 31 Range 24

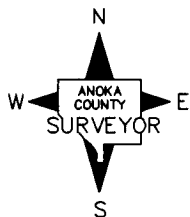
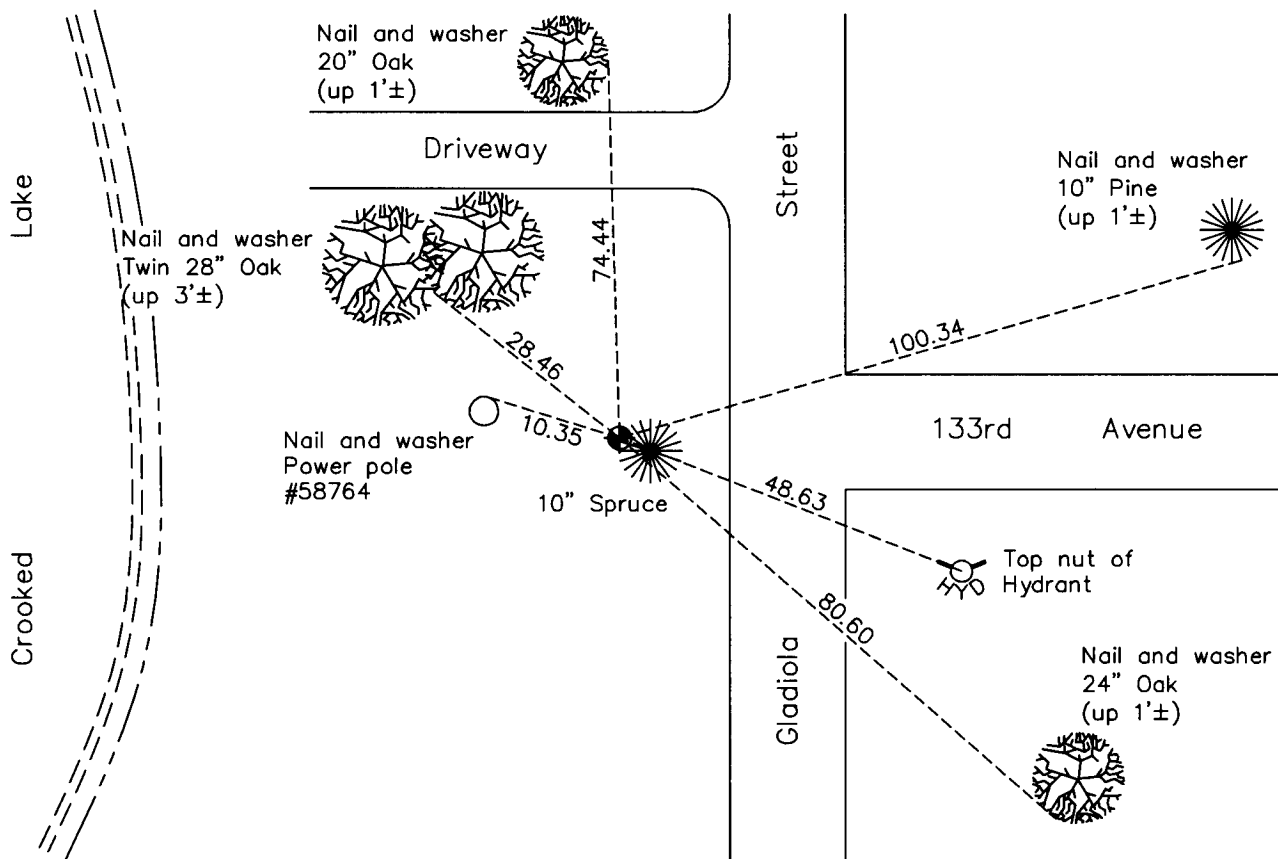
(On north line of section)

On the ____ day of _____, 1960, the described corner was evidenced by a concrete monument

and to perpetuate the location of said corner, at the exact location thereof, a permanent marker was placed consisting of a cast iron monument

AND on the 17th day of March, 2010, said permanent marker was found down 0.5' and under a 10" Spruce. The ties were updated.

Updated reference ties are as shown below.



N.A.D. 1983 Coordinates
(1996 Adjustment)

County Project Coordinates	
Northing	164571.1240
Easting	480878.2030
Date	7/19/00

Revision Date
4/19/10

I hereby certify that this United States public land survey monument record is correct and complete to the best of my knowledge and belief.

Larry D. Hoium Date 4/19/10

Larry D. Hoium, Anoka County Surveyor

Minnesota License Number 18165

HISTORY OF GOVERNMENT CORNER

Page No. 8

County of Anoka

State of Minnesota

Witness Corner of Sec. 4 Township 31 Range 24
(On north line of section)

CORNER HISTORY:

May 5, 1947 - H.A. Cartwright found M.C.#2, concrete monument, flush with the surface. Established ties to monument.

September 7, 1960 - Found concrete monument flush with the surface and set 1/2" iron pipe on the north side. Updated ties.

June 8, 1964 - Found concrete monument and updated ties.

July 28, 1966 - Found concrete monument and updated ties.

July 22, 1970 - Found concrete monument and updated ties.

July 1, 1974 - Found concrete monument and updated ties.

June 14, 1977 - Found concrete monument and updated ties.

June 25, 1980 - Found concrete monument and updated ties.

May 3, 1992 - Set cast iron monument, as witness corner, down 0.5'± using area resurvey and established ties to monument.

August 17, 1994 - Found cast iron monument and updated ties.

July 19, 2000 - Found cast iron monument down 0.5'± and established NAD 1983 (1996 Adjustment) Anoka County Project Coordinates by Static GPS methods. Updated ties.

March 17, 2010 - Found cast iron monument down 0.5' and updated ties.