

CERTIFICATE OF LOCATION OF GOVERNMENT CORNER

County of Anoka

State of Minnesota

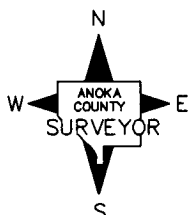
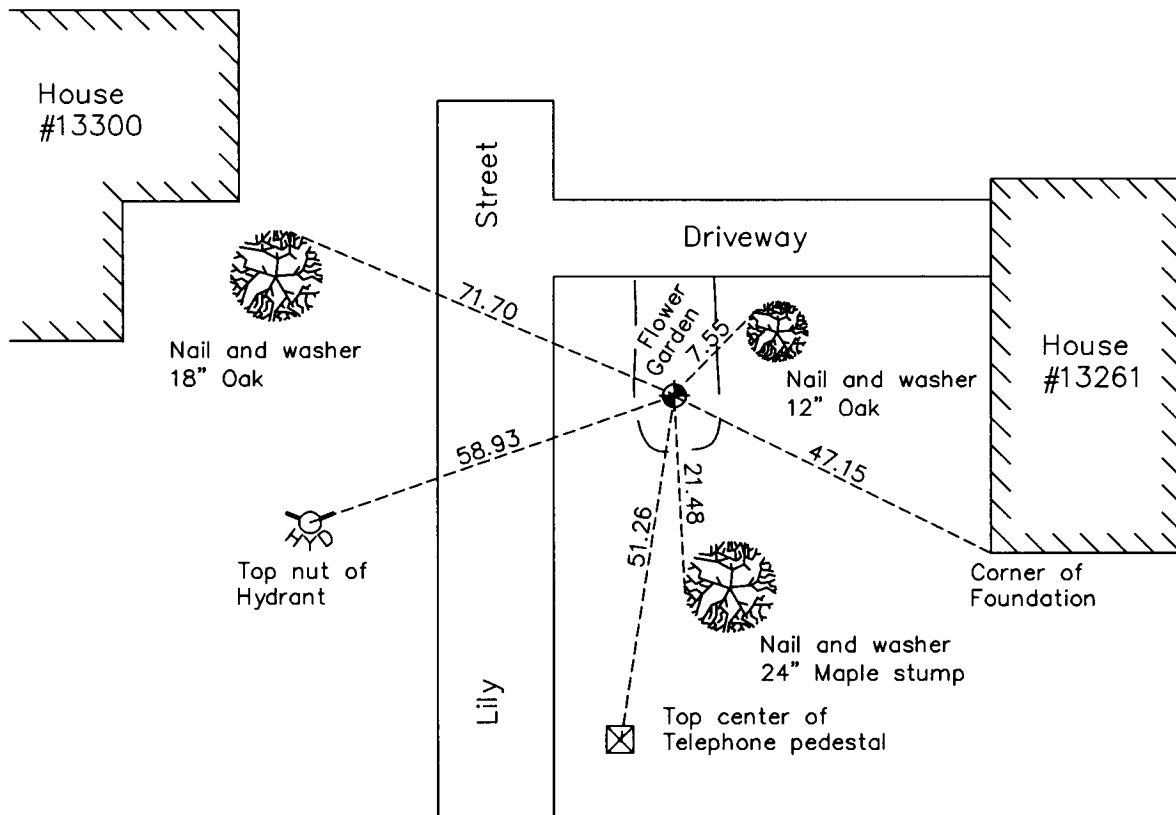
Northwest Corner of Sec. 4 Township 31 Range 24

On the 2nd day of August, 1960, the described corner was evidenced by a concrete monument

and to perpetuate the location of said corner, at the exact location thereof, a permanent marker was placed consisting of a cast iron monument 1'± west of Cedar tree trunk

AND on the 23rd day of March, 2010, said permanent marker was found and the ties were updated

Updated reference ties are as shown below.



Revision Date
4/19/10

N.A.D. 1983 Coordinates
(1996 Adjustment)

County Project Coordinates	
Northing	164549.6231
Easting	479206.9266
Date	11/16/00

I hereby certify that this United States public land survey monument record is correct and complete to the best of my knowledge and belief.

Larry D. Hoium Date 4/19/10

Larry D. Hoium, Anoka County Surveyor

Minnesota License Number 18165

HISTORY OF GOVERNMENT CORNER

Page No. 9

County of Anoka

State of Minnesota

Northwest Corner of Sec. 4 Township 31 Range 24

CORNER HISTORY:

July 31, 1944 - H.A. Cartwright found concrete monument down 3". Established ties to monument.

August 2, 1960 - Found concrete monument with an iron pipe on the north side and updated ties.

June 8, 1964 - Found concrete monument down 0.3' with an iron pipe on the north side and updated ties.

July 14, 1966 - Found concrete monument with an iron pipe on the north side and updated ties.

July 22, 1970 - Found concrete monument down 0.2'± with an iron pipe on the north side and updated ties.

July 1, 1974 - Replaced concrete monument down 0.2'± and iron pipe on north side with a cast iron monument set up 1'± and set sign and post 1'± north of monument. Updated ties.

June 8, 1977 - Raised cast iron monument to a position flush with surface and updated ties. Sign and post on the north side of monument.

June 25, 1980 - Found cast iron monument updated ties.

July 19, 1983 - Found cast iron monument updated ties.

November 9, 1983 - Found cast iron monument and updated ties.

June 18, 1986 - Found cast iron monument and updated ties.

August 16, 1990 - Found cast iron monument in flower garden and updated ties.

August 8, 1994 - Found cast iron monument in flower garden and updated ties.

November 16, 2000 - Found cast iron monument 1'± west of Cedar tree base and established NAD 1983 (1996 Adjustment) Anoka County Project Coordinates by Static GPS methods. Updated ties.

March 23, 2010 - Found cast iron monument in flower garden and updated ties.