

CERTIFICATE OF LOCATION OF GOVERNMENT CORNER

County of Anoka

State of Minnesota

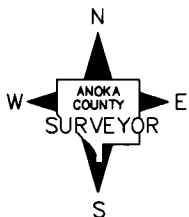
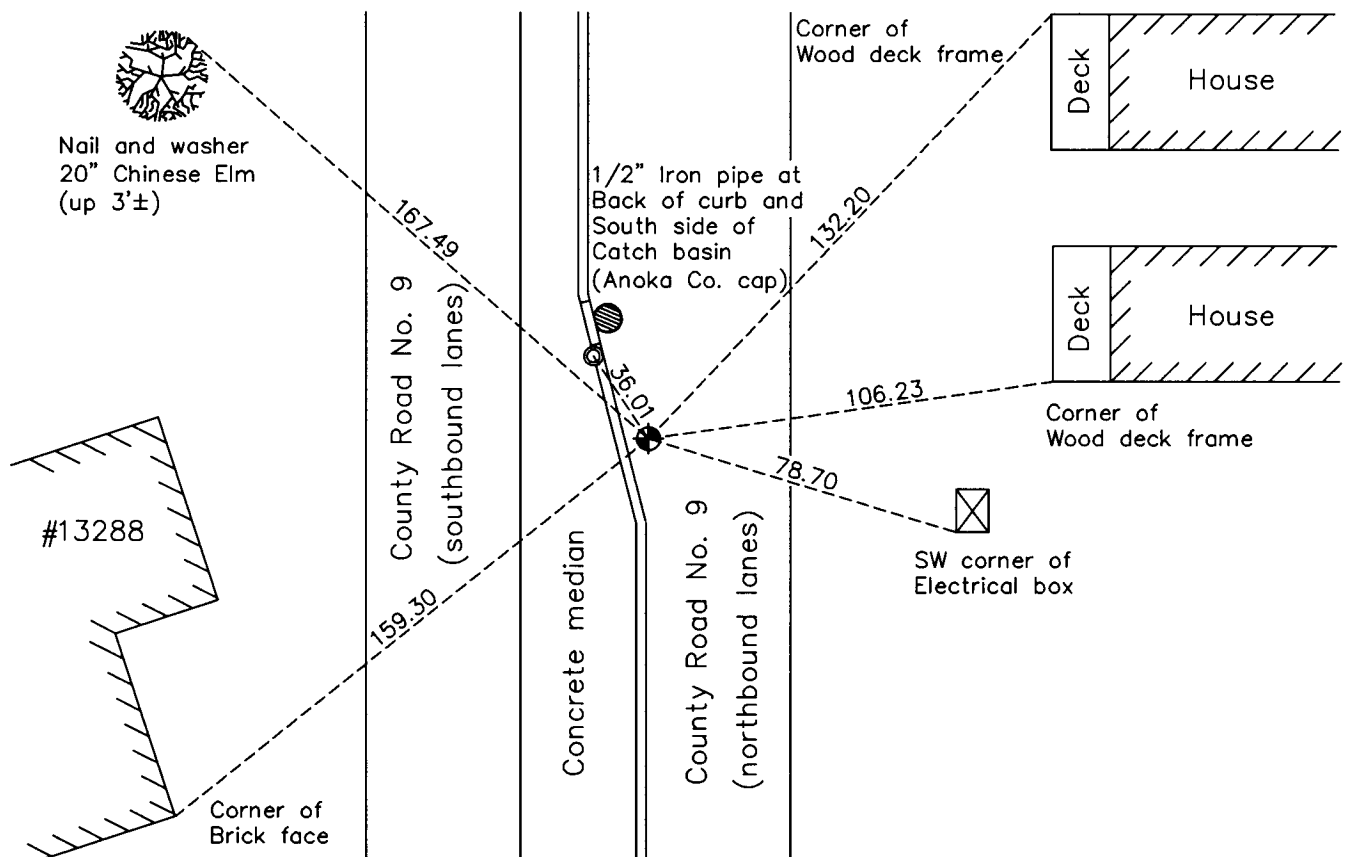
North $\frac{1}{4}$ Corner of Sec. 5 Township 31 Range 24

On the 2nd day of August, 1960, the described corner was evidenced by a granite monument

and to perpetuate the location of said corner, at the exact location thereof, a permanent marker was placed consisting of a cast iron monument

AND on the 25th day of March, 2010, said permanent marker was found and the ties were updated

Updated reference ties are as shown below.



N.A.D. 1983 Coordinates
(1996 Adjustment)

County Project Coordinates	
Northing	164553.6994
Easting	476580.5924
Date	11/16/00

Revision Date
4/19/10

I hereby certify that this United States public land survey monument record is correct and complete to the best of my knowledge and belief.

Larry D. Hoium Date 4/19/10

Larry D. Hoium, Anoka County Surveyor
Minnesota License Number 18165

HISTORY OF GOVERNMENT CORNER

Page No. 10

County of Anoka

State of Minnesota

North 1/4 Corner of Sec. 5 Township 31 Range 24

CORNER HISTORY:

August 9, 1955 - C.E. Coulter found granite monument down 1.0' in centerline of Round Lake Blvd. Set iron pipe flush with surface and established ties to monument.

November 1959 - N.C. Hoium found granite monument down 1.5' and updated ties.

August 2, 1960 - Found iron pipe down 0.3' over granite monument and updated ties.

September 14, 1964 - Found iron pipe and updated ties.

July 14, 1966 - Found iron pipe and updated ties.

July 23, 1970 - Replaced iron pipe, down 0.2', over granite monument, down 1'±, with a shortened cast iron monument set flush with surface on top of granite monument and updated ties. Set P.K. nails 2.00' North and East.

July 5, 1974 - Found cast iron monument and updated ties.

June 16, 1977 - Found cast iron monument and updated ties. Set P.K.nails North and East.

September 21, 1979 - Found cast iron monument and updated ties. Monument is 3.5'± east of centerline.

June 25, 1980 - Found cast iron monument and updated ties.

June 16, 1986 - Found cast iron monument and updated ties.

April 17, 1990 - Set construction ties and prior to road construction.

May 18, 1994 - Set cast iron monument flush with surface on top of granite monument after road construction using construction ties. Monument is next to concrete curb. Updated ties.

August 8, 1994 - Found cast iron monument and updated ties.

November 16, 2000 - Found cast iron monument and established NAD 1983 (1996 Adjustment) Anoka County Project Coordinates by Static GPS methods. Updated ties.

March 25, 2010 - Found cast iron monument and updated ties.