

CERTIFICATE OF LOCATION OF GOVERNMENT CORNER

County of Anoka

State of Minnesota

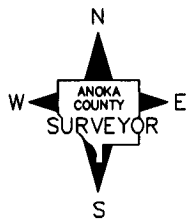
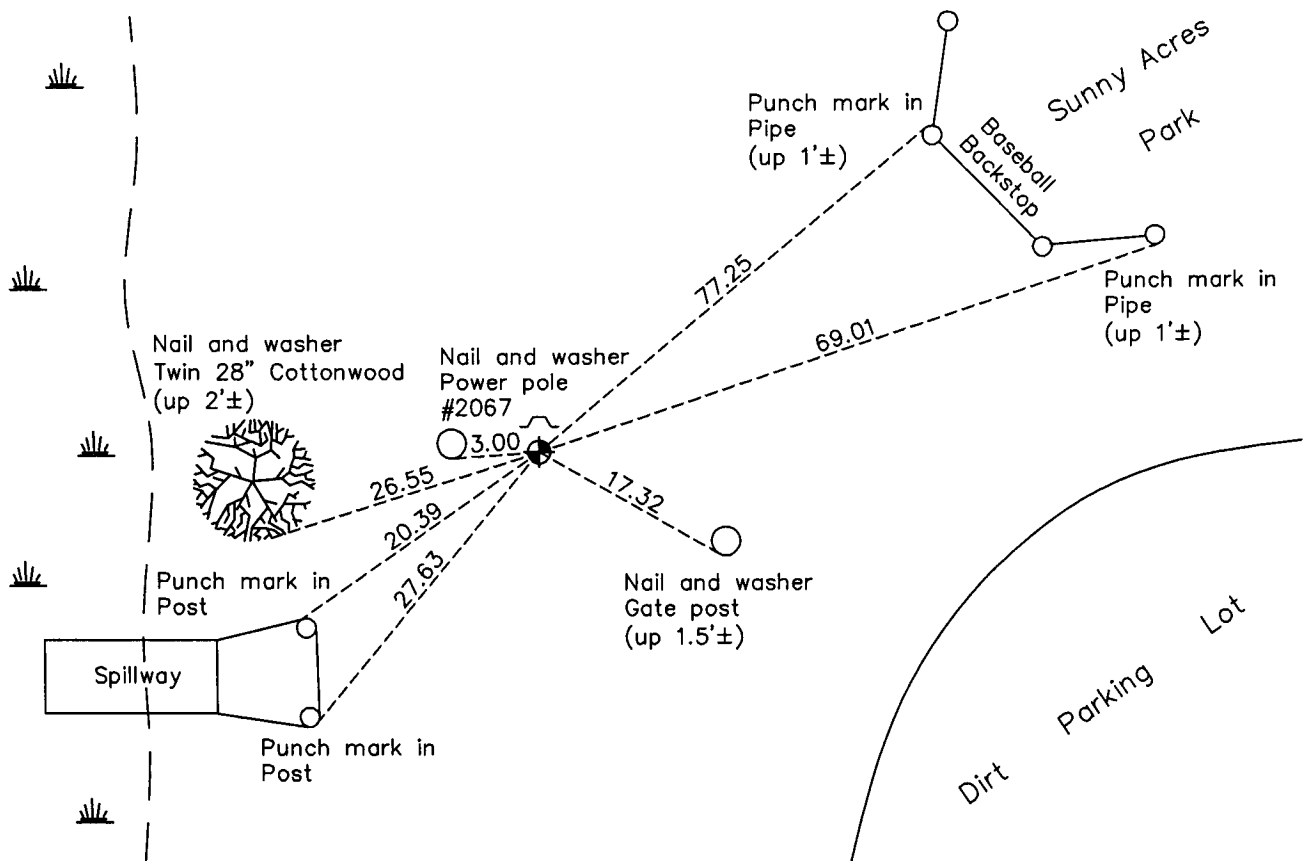
Northwest Corner of Sec. 5 Township 31 Range 24

On the 2nd day of August, 1960, the described corner was evidenced by a concrete monument

and to perpetuate the location of said corner, at the exact location thereof, a permanent marker was placed consisting of a cast iron monument with a post on the north side and a sign on the power pole 3' west

AND on the 16th day of March, 2010, said permanent marker was found down 0.1' and the ties were updated

Updated reference ties are as shown below.



Revision Date
4/20/10

N.A.D. 1983 Coordinates
(1996 Adjustment)

County Project Coordinates	
Northing	<u>164569.4827</u>
Easting	<u>473956.0803</u>
Date	<u>11/20/00</u>

I hereby certify that this United States public land survey monument record is correct and complete to the best of my knowledge and belief.

Larry D. Hoium Date 4/20/10

Larry D. Hoium, Anoka County Surveyor
Minnesota License Number 18165

HISTORY OF GOVERNMENT CORNER

Page No. 11

County of Anoka

State of Minnesota

Northwest Corner of Sec. 5 Township 31 Range 24

CORNER HISTORY:

December 10, 1940 - H.A. Cartwright found concrete monument up 4". Established ties to monument.

July 1956 - W. Lundstrom found concrete monument and updated ties.

August 2, 1960 - Found concrete monument up 1' and broken off with an iron pipe on the north side and updated ties.

September 16, 1964 - Found concrete monument up 1' and broken off with an iron pipe on the north side and updated ties. Monument is 1' south and 2' west of fence corner.

August 18, 1967 - Area around corner was wet.

July 23, 1970 - Found concrete monument up 0.5'±, broken off and loose with an iron pipe on the north side. Updated ties. Steel fence post 2'± east and up 10'±.

January 3, 1974 - Found concrete monument with an iron pipe on the north side. Updated ties.

July 1, 1974 - Found concrete monument with an iron pipe on the north side. Updated ties.

July 12, 1974 - Replaced concrete monument and iron pipe with a red and white iron pipe set up 3'±. Steel fence post up 8'± on east side of iron pipe.

August 25, 1976 - Set cast iron monument flush with surface after construction using area resurvey. Set sign and post on north side of monument.

June 16, 1977 - Found cast iron monument and updated ties.

June 25, 1980 - Found cast iron monument with sign and post on north side and updated ties.

August 21, 1990 - Found cast iron monument with sign and post on north side and updated ties.

August 8, 1994 - Found cast iron monument with sign and post on north side and updated ties.

November 20, 2000 - Found cast iron monument and established NAD 1983 (1996 Adjustment) Anoka County Project Coordinates by Static GPS methods. Updated ties.

March 16, 2010 - Found cast iron monument down 0.1' with a post on north side and a sign on power pole 3' west. Updated ties.