

CERTIFICATE OF LOCATION OF GOVERNMENT CORNER

County of Anoka

State of Minnesota

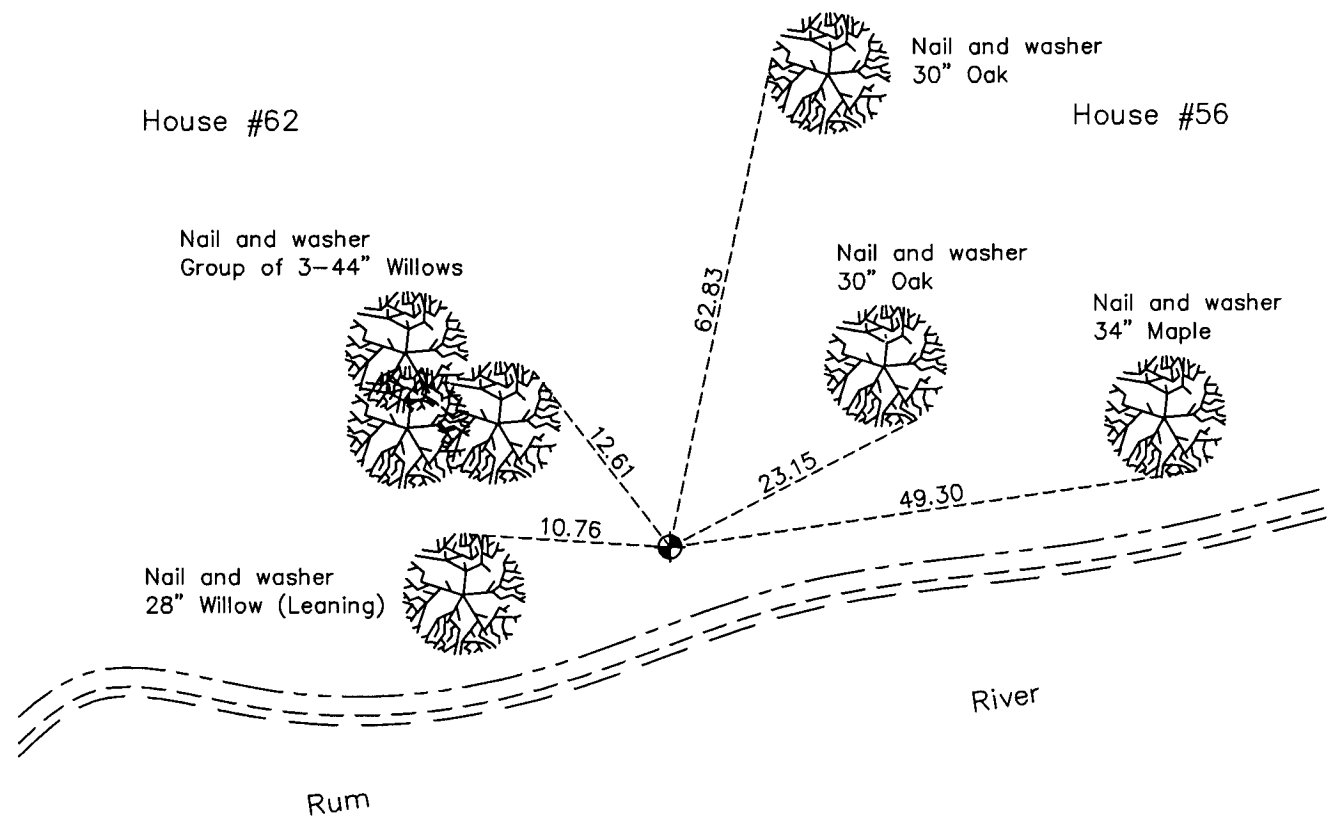
Meander Corner of Sec. 6 Township 31 Range 24 (On west line of section)

On the 19th day of April, 1961, the described corner was evidenced by a 1 1/2" Iron pipe

and to perpetuate the location of said corner, at the exact location thereof, a permanent marker was placed consisting of a cast iron monument

AND on the 16th day of March, 2010, said permanent marker was found down 0.3' and the ties were updated

Updated reference ties are as shown below.



Revision Date

4/21/10

N.A.D. 1983 Coordinates
(1996 Adjustment)

County Project Coordinates	
Northing	161304.1081
Easting	468516.8791
Date	6/22/01

I hereby certify that this United States public land survey monument record is correct and complete to the best of my knowledge and belief.

Larry D. Hoium Date 4/21/10

Larry D. Hoium, Anoka County Surveyor

Minnesota License Number 18165

HISTORY OF GOVERNMENT CORNER

Page No. 15

County of Anoka

State of Minnesota

Meander Corner of Sec. 6 Township 31 Range 24 (On west line of section)

CORNER HISTORY:

April 19, 1961 - Replaced found 1 1/2" iron pipe, down 0.8'±, with a cast iron monument . Updated ties.

July 28, 1966 - Found cast iron monument and updated ties.

August 6, 1970 - Found cast iron monument and updated ties.

July 2, 1974 - Found cast iron monument and updated ties.

June 15, 1977 - Found cast iron monument and updated ties.

July 10, 1980 - Found cast iron monument and updated ties.

November 14, 1983 - Found cast iron monument and updated ties.

June 23, 1986 - Found cast iron monument and updated ties.

May 30, 1991 - Found cast iron monument and updated ties.

August 22, 1994 - Found cast iron monument and updated ties.

June 12, 2001 - Found cast iron monument and updated ties.

June 22, 2001 - Found cast iron monument and established NAD 1983 (1996 Adjustment) Anoka County Project Coordinates by Static GPS methods.

March 16, 2010 - Found cast iron monument down 0.3' and updated ties.