

CERTIFICATE OF LOCATION OF GOVERNMENT CORNER

County of Anoka

State of Minnesota

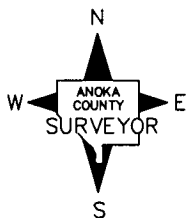
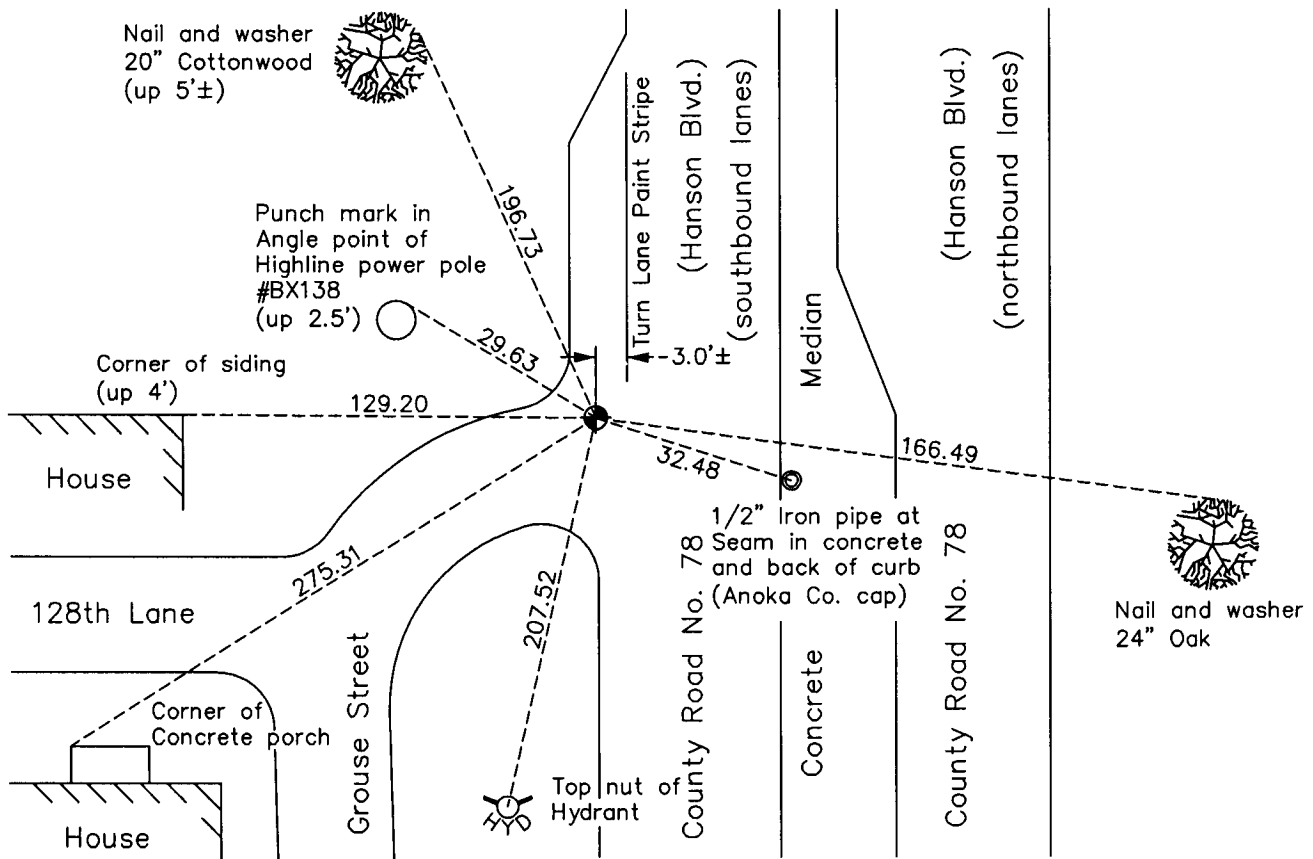
West 1/4 Corner of Sec. 2 Township 31 Range 24

On the 31st day of August, 1964, the described corner was evidenced by a 1/2" iron pipe

and to perpetuate the location of said corner, at the exact location thereof, a permanent marker was placed consisting of a cast iron monument

AND on the 15th day of March, 2010, said permanent marker was found and the ties were updated

Updated reference ties are as shown below.



N.A.D. 1983 Coordinates
(1996 Adjustment)

| County Project Coordinates | |
|----------------------------|-------------|
| Northing | 161745.5943 |
| Easting | 489727.9491 |
| Date | 9/14/01 |

Revision Date
4/22/10

I hereby certify that this United States public land survey monument record is correct and complete to the best of my knowledge and belief.

Larry D. Hoium Date 4/22/10

Larry D. Hoium, Anoka County Surveyor

Minnesota License Number 18165

HISTORY OF GOVERNMENT CORNER

Page No. 20

County of Anoka

State of Minnesota

West 1/4 Corner of Sec. 2 Township 31 Range 24

CORNER HISTORY:

April 14, 1959 - Found 1 " solid iron. Established ties to monument.

August 31, 1964 - Found 1/2" iron pipe down 0.5'± and updated ties.

July 22, 1966 - Found 1/2" iron pipe and updated ties.

August 26, 1968 - Updated ties prior to road construction.

August 19, 1969 - Set cast iron monument flush with surface after road construction using ties and set P.K nails 2.00' North and East.

July 2, 1974 - Found cast iron monument and updated ties.

June 16, 1977 - Found cast iron monument and updated ties.

July 27, 1978 - Found cast iron monument and updated ties.

September 25, 1978 - Added spacer/s and replaced top of cast iron monument. Updated ties.

June 20, 1980 - Found cast iron monument and updated ties.

January 10, 1995 - Found cast iron monument and updated ties.

September 14, 2001 - Found cast iron monument and established NAD 1983 (1996 Adjustment) Anoka County Project Coordinates by Static GPS methods.

March 15, 2010 - Found cast iron monument and updated ties.