

CERTIFICATE OF LOCATION OF GOVERNMENT CORNER

County of Anoka

State of Minnesota

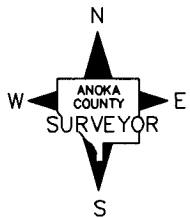
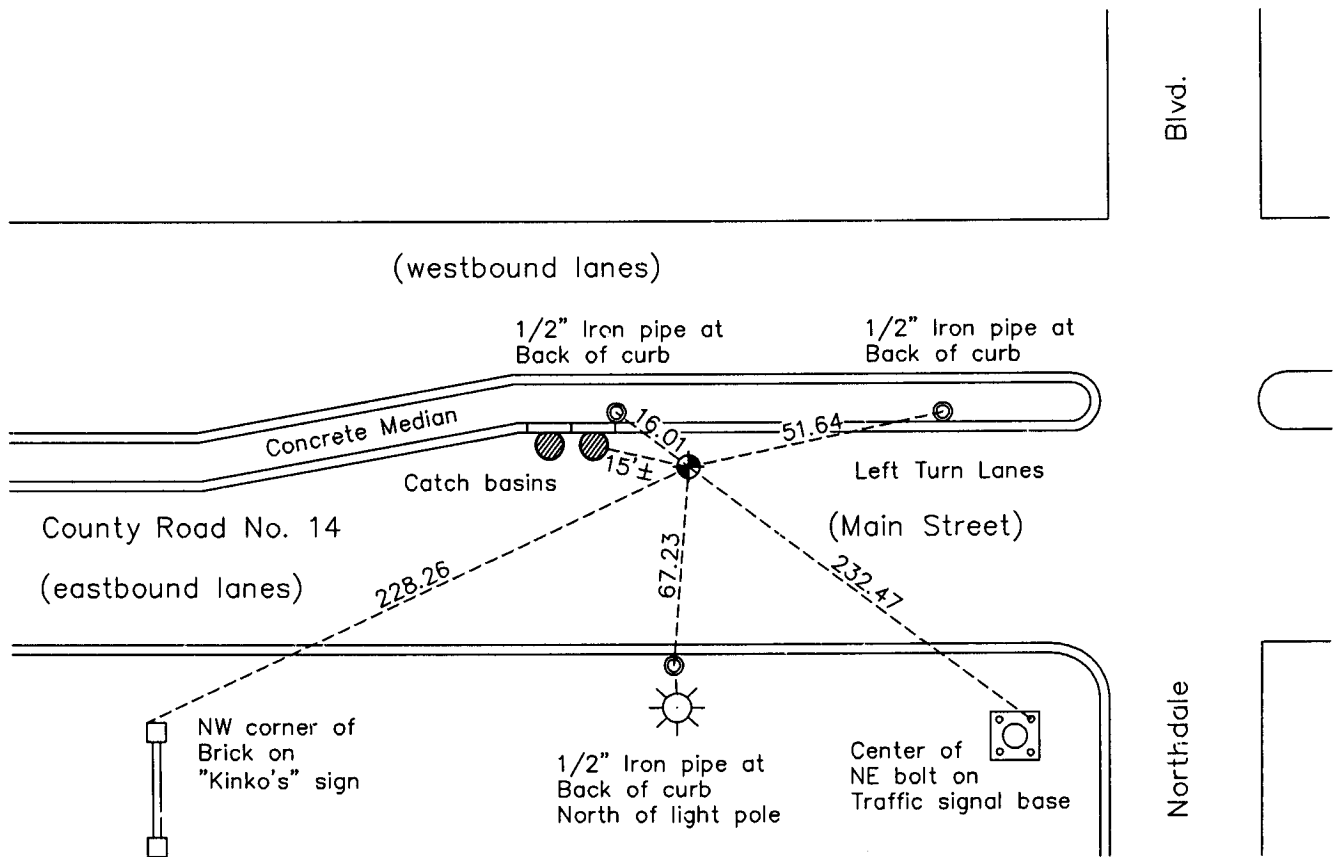
Southeast Corner of Sec. 5 Township 31 Range 24

On the 16th day of August, 1960, the described corner was evidenced by a granite monument

and to perpetuate the location of said corner, at the exact location thereof, a permanent marker was placed consisting of a cast iron monument

AND on the 18th day of March, 2010, said permanent marker was found and the ties were updated

Updated reference ties are as shown below.



Revision Date
4/27/10

N.A.D. 1983 Coordinates
(1996 Adjustment)

County Project Coordinates	
Northing	159175.1864
Easting	479066.2631
Date	9/28/01

I hereby certify that this United States public land survey monument record is correct and complete to the best of my knowledge and belief.

Larry D. Hoium Date 4/27/10
 Larry D. Hoium, Anoka County Surveyor
 Minnesota License Number 18165

HISTORY OF GOVERNMENT CORNER

Page No. 35

County of Anoka

State of Minnesota

Southeast Corner of Sec. 5 Township 31 Range 24

CORNER HISTORY:

April 10, 1943 - H. A. Cartwright found 6" X 6" granite monument down 10" in centerline of Main Street. Established ties to monument.

August 16, 1960 - Found granite monument down 2'. Set cast iron monument flush with surface and updated ties.

June 29, 1964 - Found cast iron monument flush with surface and updated ties.

July 14, 1966 - Found cast iron monument flush with surface and updated ties.

July 23, 1970 - Found cast iron monument flush with surface and updated ties. Set P.K. nails 2.00' North and East.

July 19, 1974 - Found cast iron monument and updated ties.

June 17, 1977 - Found cast iron monument and updated ties.

June 25, 1980 - Found cast iron monument and updated ties.

July 25, 1983 - Found cast iron monument and updated ties.

December 15, 1983 - Found cast iron monument and updated ties.

June 24, 1984 - Found cast iron monument and updated ties.

June 24, 1991 - Found cast iron monument and updated ties.

August 8, 1994 - Found cast iron monument and updated ties.

March 10, 2000 - Set construction ties. Cast iron monument to be removed prior to road construction.

November 7, 2000 - Set cast iron monument after road construction using construction ties. Updated ties.

September 28, 2001 - Found cast iron monument and established NAD 1983 (1996 Adjustment) Anoka County Project Coordinates by Static GPS methods.

March 18, 2010 - Found cast iron monument and updated ties.