

CERTIFICATE OF LOCATION OF GOVERNMENT CORNER

County of Anoka

State of Minnesota

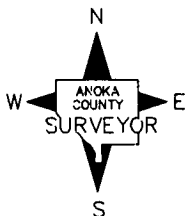
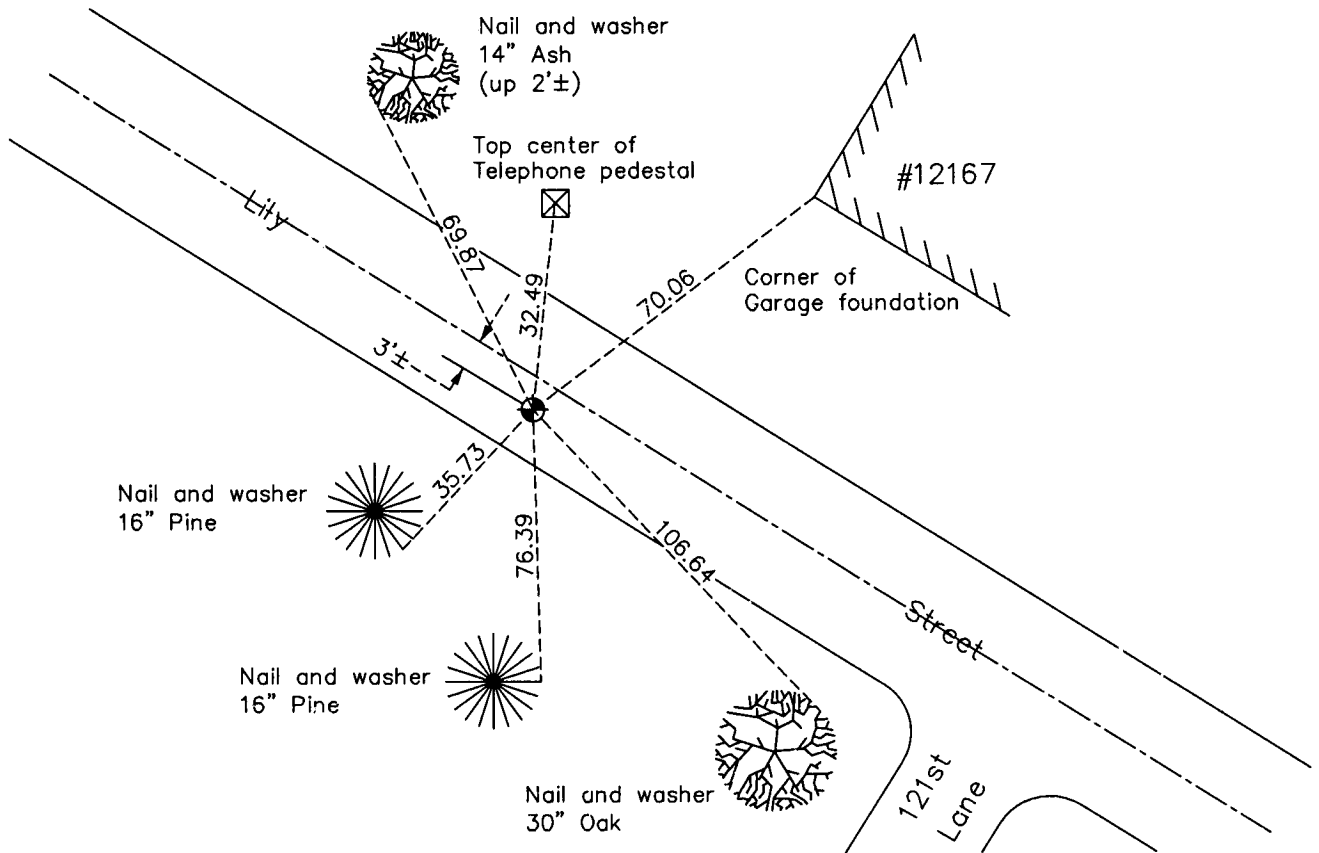
West 1/4 Corner of Sec. 9 Township 31 Range 24

On the 12th day of August, 1960, the described corner was evidenced by a concrete monument

and to perpetuate the location of said corner, at the exact location thereof, a permanent marker was placed consisting of a cast iron monument

AND on the 18th day of February, 2010, said permanent marker was found flush and the ties were updated

Updated reference ties are as shown below.



Revision Date
4/30/10

N.A.D. 1983 Coordinates
(1996 Adjustment)

County Project Coordinates	
Northing	<u>156534.8752</u>
Easting	<u>479048.3178</u>
Date	<u>8/14/01</u>

I hereby certify that this United States public land survey monument record is correct and complete to the best of my knowledge and belief.

Larry D. Hoium Date 4/30/10

Larry D. Hoium, Anoka County Surveyor

Minnesota License Number 18165

HISTORY OF GOVERNMENT CORNER

Page No. 40

County of Anoka

State of Minnesota

West 1/4 Corner of Sec. 9 Township 31 Range 24

CORNER HISTORY:

May 26, 1944 - H.A. Cartwright found concrete monument down 1'. Established ties to monument.

August 12, 1960 - Found concrete monument flush with surface and updated ties.

June 16, 1964 - Found concrete monument flush with surface and an iron pipe on North side. Updated ties.

July 14, 1966 - Found concrete monument flush with surface and iron pipe on North side. Updated ties.

July 23, 1970 - Found concrete monument flush with surface and iron pipe on North side. Updated ties.

July 5, 1974 - Replaced concrete monument with a cast iron monument set flush with the surface and set a warning sign 1'± north. Updated ties.

June 20, 1977 - Found cast iron monument. Updated ties.

July 21, 1980 - Found cast iron monument. Updated ties.

June 20, 1986 - Found cast iron monument and updated ties.

October 21, 1987 - Updated ties and removed cast iron monument prior to road construction.

September 19, 1988 - Set cast iron monument flush with surface after road construction using updated ties.

August 20, 1990 - Found cast iron monument and updated ties.

August 12, 1994 - Found cast iron monument and updated ties.

August 14, 2001 - Found cast iron monument and established NAD 1983 (1996 Adjustment) Anoka County Project Coordinates by Static GPS methods.

February 18, 2010 - Found cast iron monument flush with the surface and updated ties.