

CERTIFICATE OF LOCATION OF GOVERNMENT CORNER

County of Anoka

State of Minnesota

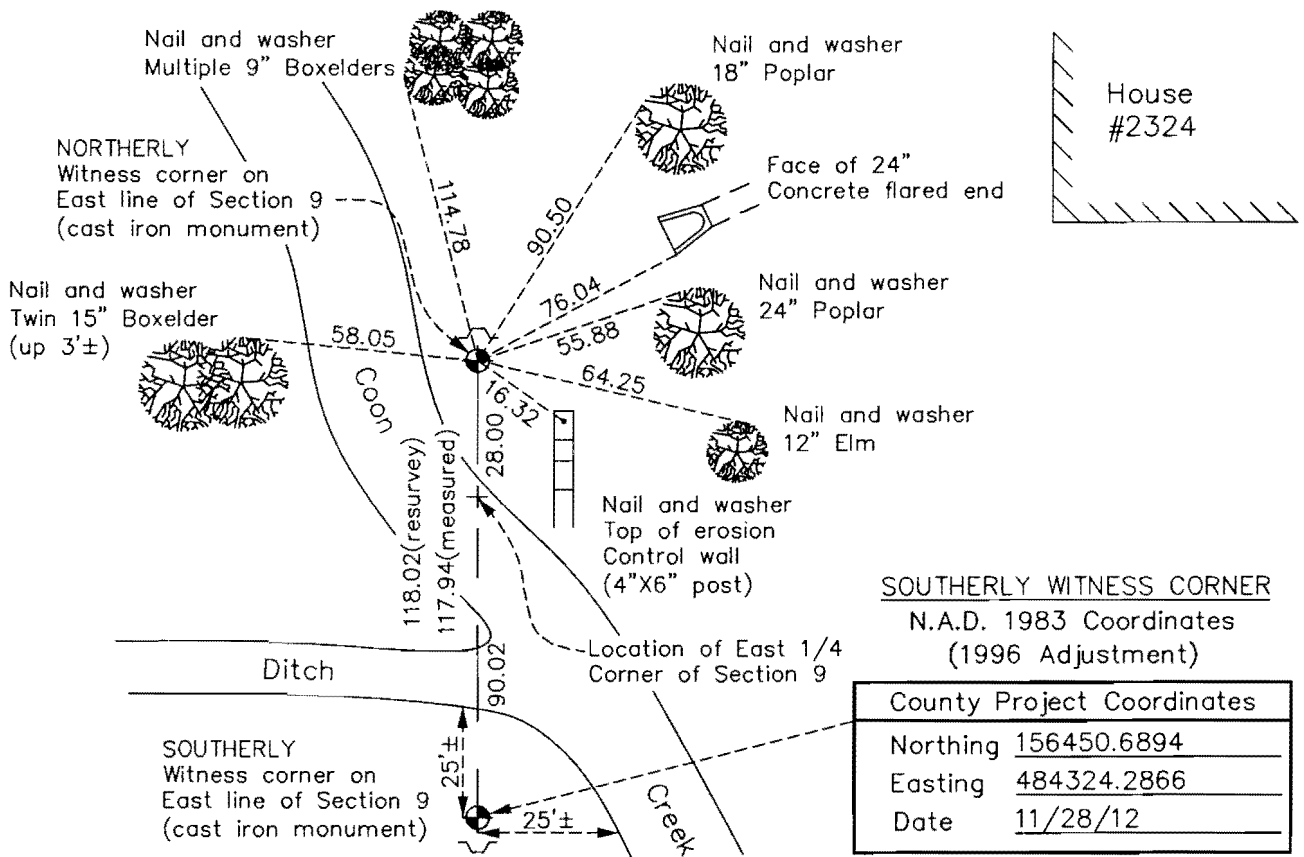
Witness Corner of Sec. 9 Township 31 Range 24
(On east line of section)

On the 29th day of July, 1970, the described corner was evidenced by area resurvey

and to perpetuate the location of said corner, at the exact location thereof, a permanent marker was placed consisting of a cast iron monument with a sign and post on the north side

AND on the 28th day of November, 2012, said permanent marker was found (north and south Witness corner CIM's were found) and the ties were updated.

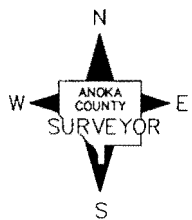
Updated reference ties are as shown below.



| | |
|--|-------------|
| <u>SOUTHERLY WITNESS CORNER</u> | |
| N.A.D. 1983 Coordinates (1996 Adjustment) | |
| County Project Coordinates | |
| Northing | 156450.6894 |
| Easting | 484324.2866 |
| Date | 11/28/12 |

NORTHERLY WITNESS CORNER
N.A.D. 1983 Coordinates
(1996 Adjustment)

| | |
|----------------------------|-------------|
| County Project Coordinates | |
| Northing | 156568.6117 |
| Easting | 484326.3288 |
| Date | 9/13/01 |



Revision Date

12/24/12

I hereby certify that this United States public land survey monument record is correct and complete to the best of my knowledge and belief.

Larry D. Hoium Date 12/24/12

Larry D. Hoium, Anoka County Surveyor
Minnesota License Number 18165

HISTORY OF GOVERNMENT CORNER

Page No. 41

County of Anoka

State of Minnesota

Witness Corner of Sec. 9 Township 31 Range 24
(On east line of section)

CORNER HISTORY:

July 10, 1969 - Set 1" iron pipe at East Quarter corner of Section 9 up 0.5'± and 2'± into Coon Creek using area resurvey. Established ties to monument.

July 29, 1970 - Set cast iron monuments for Witness corners using area resurvey and established ties to northerly monument.

September 17, 1974 - Set red and white iron pipe at East Quarter corner of Section 9 up 3'± in Coon Creek. Updated ties to northerly Witness corner.

June 20, 1977 - Set sign and post 1.0'± north of northerly Witness corner monument. Updated ties to northerly monument.

July 25, 1983 - Found cast iron monuments and updated ties.

June 18, 1986 - Found cast iron monuments and updated ties .

July 26, 1991 - Found cast iron monuments and updated ties .

August 22, 1994 - Found cast iron monuments and updated ties .

September 13, 2001 - Found cast iron monuments and established NAD 1983 (1996 Adjustment) Anoka County Project Coordinates by Static GPS methods on northerly monument. Updated ties.

March 29, 2010 - Found cast iron monuments and updated ties .

November 19, 2012 - Found 2" iron pipe laying down in creek and removed it. Found and verified location of both witness corner cast iron monuments by Static GPS methods.

November 28, 2012 - Reset both northerly and southerly witness corners to more accurately fit resurvey. Moved northerly witness corner north 0.03' and east 0.12' to fit previous Static GPS position. Moved southerly witness corner west 0.18' to a point on line between the calculated position of East 1/4 corner and Southeast corner of Section 9.