

CERTIFICATE OF LOCATION OF GOVERNMENT CORNER

County of Anoka

State of Minnesota

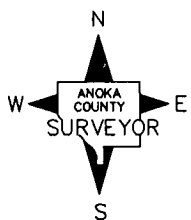
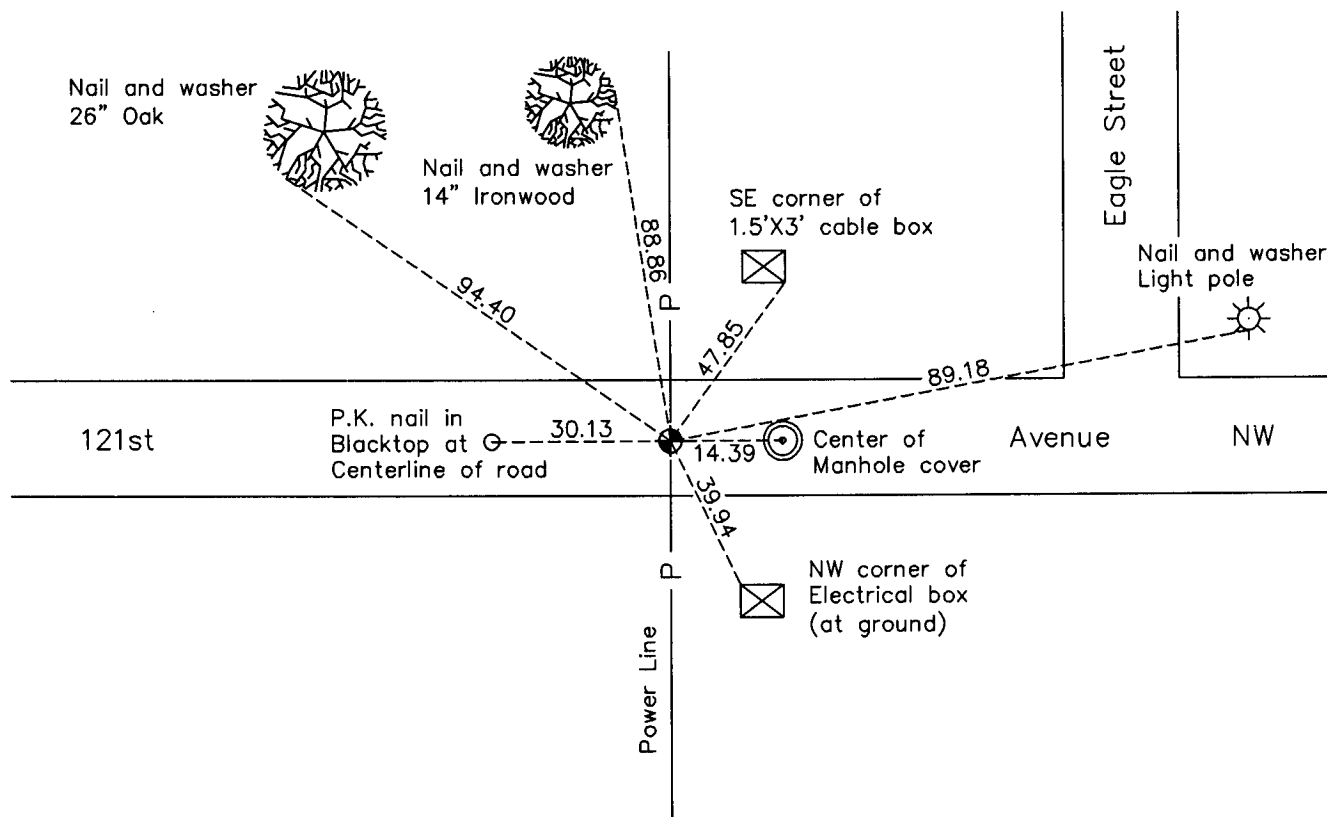
West 1/4 Corner of Sec. 11 Township 31 Range 24

On the 26th day of May, 1973, the described corner was evidenced by a concrete monument

and to perpetuate the location of said corner, at the exact location thereof, a permanent marker was placed consisting of a cast iron monument on centerline

AND on the 17th day of February, 2010, said permanent marker was found flush and the ties were updated

Updated reference ties are as shown below.



N.A.D. 1983 Coordinates
(1996 Adjustment)

County Project Coordinates	
Northing	156430.3562
Easting	489660.6358
Date	8/10/01

Revision Date
4/30/10

I hereby certify that this United States public land survey monument record is correct and complete to the best of my knowledge and belief.

Larry D. Hoium Date 4/30/10

Larry D. Hoium, Anoka County Surveyor

Minnesota License Number 18165

HISTORY OF GOVERNMENT CORNER

Page No. 42

County of Anoka

State of Minnesota

West 1/4 Corner of Sec. 11 Township 31 Range 24

CORNER HISTORY:

November 26, 1956 - Found concrete monument and pinched iron. Established ties to monument.

July 1957 - Minder Engineering Company found concrete monument and pinched iron. Updated ties.

February 18, 1960 - Found concrete monument down 7" with a pinched iron on the north side down 2" and updated ties.

June 5, 1964 - Found concrete monument with a pinched iron on the north side and updated ties.

July 13, 1966 - Found concrete monument with a pinched iron on the north side and updated ties.

July 10, 1969 - Found concrete monument down 0.5' with a 1/2" pinched iron on the north side and updated ties.

May 15, 1972 - Removed concrete monument and updated ties.

May 26, 1973 - Replaced concrete monument with a cast iron monument. Updated ties.

July 8, 1974 - Found cast iron monument and updated ties.

June 20, 1977 - Found cast iron monument and updated ties.

June 24, 1980 - Found cast iron monument with all old ties gone. Established new ties.

August 13, 1990 - Found cast iron monument and updated ties.

August 8, 1994 - Found cast iron monument and updated ties.

January 10, 1995 - Found cast iron monument and updated ties.

July 29, 1997 - Set construction ties and removed cast iron monument prior to road construction.

October 13, 1997 - Set cast iron monument flush with surface after road construction using construction ties.

August 10, 2001 - Found cast iron monument and established NAD 1983 (1996 Adjustment) Anoka County Project Coordinates by Static GPS methods. Updated ties.

February 17, 2010 - Found cast iron monument flush with the surface and updated ties.