

CERTIFICATE OF LOCATION OF GOVERNMENT CORNER

County of Anoka

State of Minnesota

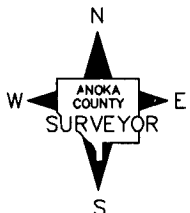
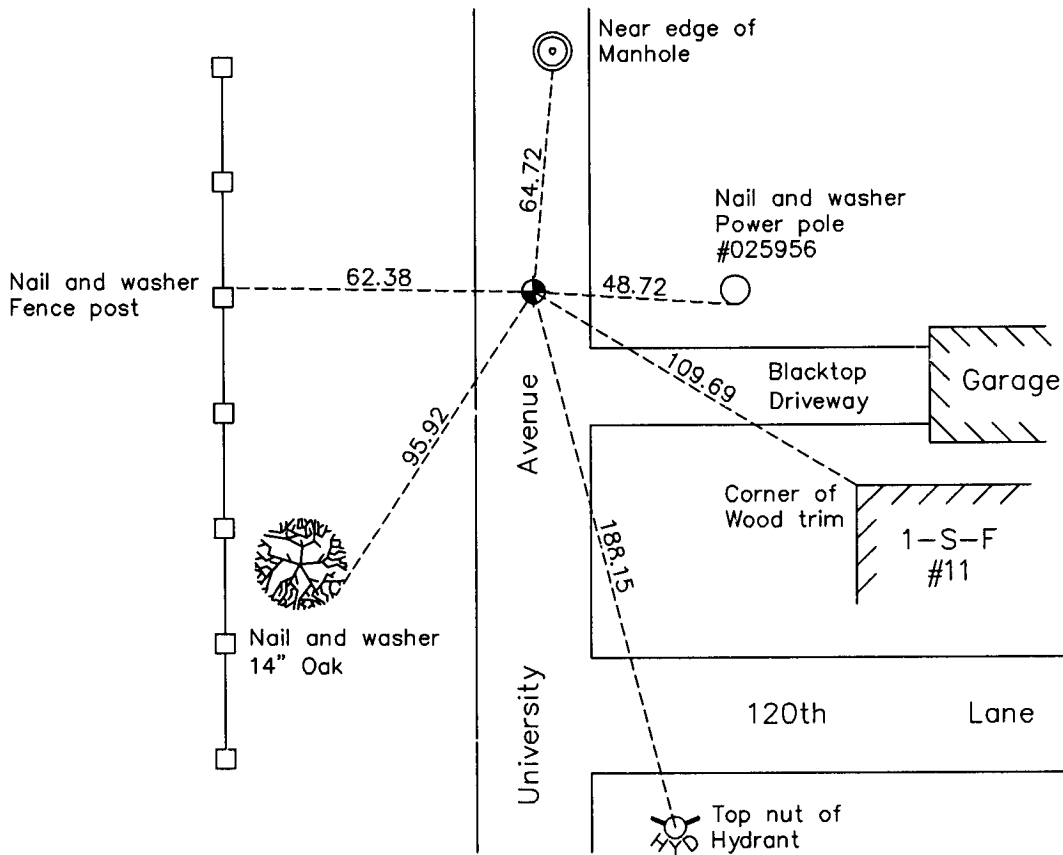
East 1/4 Corner of Sec. 12 Township 31 Range 24

On the 6th day of July, 1960, the described corner was evidenced by a concrete monument

and to perpetuate the location of said corner, at the exact location thereof, a permanent marker was placed consisting of a cast iron monument

AND on the day of February, 2010, said permanent marker was found and the ties were updated

Updated reference ties are as shown below.



N.A.D. 1983 Coordinates
(1996 Adjustment)

County Project Coordinates	
Northing	156332.5680
Easting	500177.5241
Date	10/12/98

Revision Date
4/30/10

I hereby certify that this United States public land survey monument record is correct and complete to the best of my knowledge and belief.

Larry D. Hoium Date 4/30/10

Larry D. Hoium, Anoka County Surveyor
Minnesota License Number 18165

HISTORY OF GOVERNMENT CORNER

Page No. 45

County of Anoka

State of Minnesota

East 1/4 Corner of Sec. 12 Township 31 Range 24

CORNER HISTORY:

June 7, 1943 - H.A. Cartwright found concrete monument down 0.5'. Established ties to monument.

September 1954 - Harold Wilke found concrete monument and updated ties.

July 1955 - Minder Engineering Company found concrete monument down 1.5'± and set an iron pipe on top of monument. Updated ties.

July 6, 1960 - Replaced concrete monument down 2'± with a cast iron monument set flush with the surface. Updated ties.

June 18, 1964 - Found cast iron monument and updated ties.

July 11, 1966 - Found cast iron monument and updated ties.

July 24, 1970 - Found cast iron monument and set P.K. nails 2.00' south and west. Updated ties.

May 9, 1973 - Set construction ties prior to road construction.

July 8, 1974 - Set cast iron monument after road construction using construction ties and set P.K. nails 2.00' north and east. Updated ties.

June 20, 1977 - Found cast iron monument and updated ties.

July 27, 1978 - Found cast iron monument and updated ties.

September 25, 1978 - Added spacer/s and replaced top of cast iron monument. Updated ties.

June 18, 1986 - Found cast iron monument and updated ties.

August 3, 1994 - Found cast iron monument and updated ties.

October 12, 1998 - Found cast iron monument and established NAD 1983 (1996 Adjustment) Anoka County Project Coordinates by Static GPS methods. Updated ties.

February 2010 - Found cast iron monument and updated ties.