

# CERTIFICATE OF LOCATION OF GOVERNMENT CORNER

County of Anoka

State of Minnesota

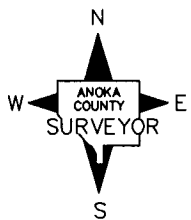
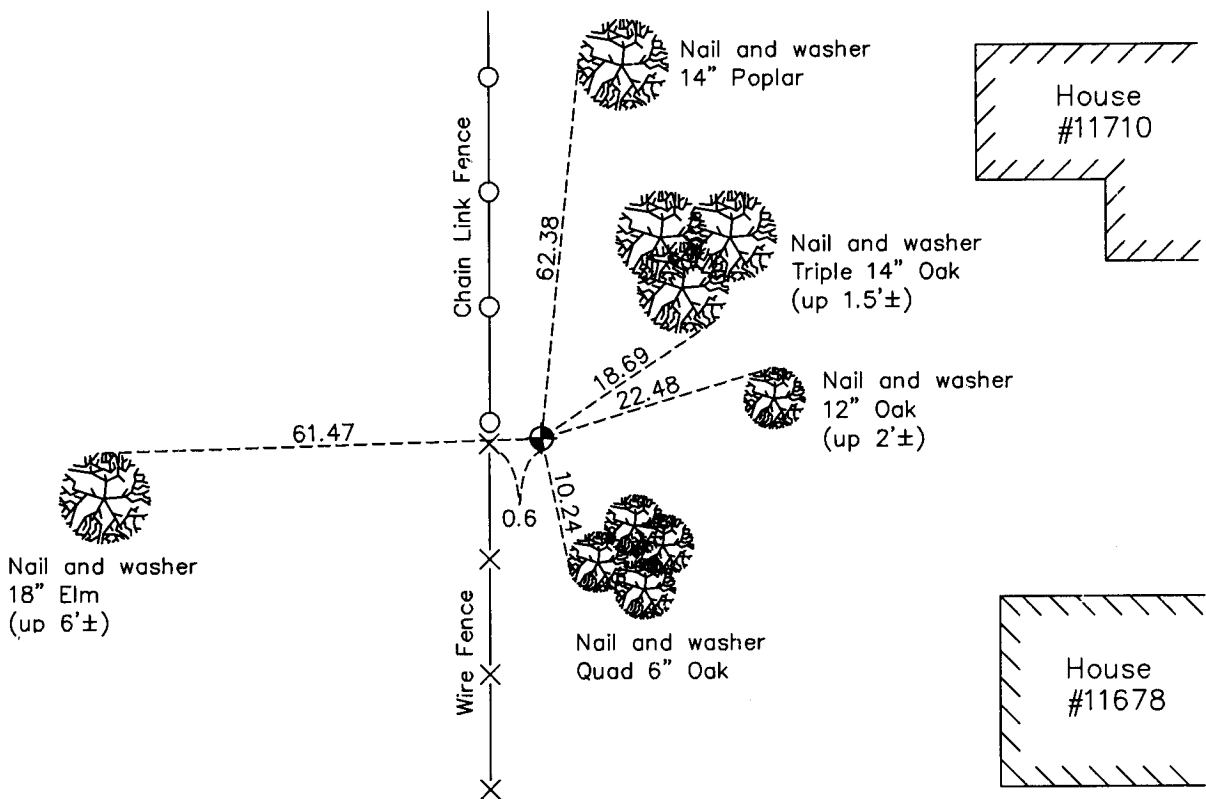
## South 1/4 Corner of Sec. 12 Township 31 Range 24

On the 23rd day of April, 1963, the described corner was evidenced by an iron pipe

and to perpetuate the location of said corner, at the exact location thereof, a permanent marker was placed consisting of a cast iron monument

AND on the 18th day of March, 2010, said permanent marker was found and the ties  
were updated

Updated reference ties are as shown below.



N.A.D. 1983 Coordinates  
(1996 Adjustment)

County Project Coordinates	
Northing	153665.8118
Easting	497459.9540
Date	8/30/01

Revision Date  
5/03/10

I hereby certify that this United States public land survey monument record is correct and complete to the best of my knowledge and belief.

*Larry D. Hoium* Date 5/03/10

Larry D. Hoium, Anoka County Surveyor

Minnesota License Number 18165

# HISTORY OF GOVERNMENT CORNER

County of Anoka

State of Minnesota

## South 1/4 Corner of Sec. 12 Township 31 Range 24

### **CORNER HISTORY:**

April 1, 1944 - H.A. Cartwright found concrete monument set flush with the surface. Established ties to monument.

July 1957 - Found concrete monument and updated ties.

February 18, 1960 - Found open iron pipe set in concrete up 1'±. Updated ties.

April 23, 1963 - Found iron pipe set in concrete with an iron pipe on west side. Updated ties.

July 27, 1965 - Found iron pipe set in concrete with an iron pipe on west side. Updated ties.

July 12, 1966 - Found iron pipe set in concrete with an iron pipe on west side. Updated ties.

July 27, 1970 - Found iron pipe set in concrete with an iron pipe on west side. Updated ties.

June 20, 1977 - Replaced iron pipe with a cast iron monument set flush with the surface. Updated ties.

July 9, 1980 - Found cast iron monument set flush with the surface and updated ties.

July 25, 1983 - Found cast iron monument and updated ties.

December 29, 1983 - Found cast iron monument and updated ties.

June 23, 1986 - Found cast iron monument and updated ties.

August 13, 1990 - Found cast iron monument and updated ties.

August 9, 1994 - Found cast iron monument and updated ties.

August 8, 2001 - Found cast iron monument and established NAD 1983 (1996 Adjustment) Anoka County Project Coordinates by Static GPS methods. Updated ties.

March 18, 2010 - Found cast iron monument and updated ties.