

CERTIFICATE OF LOCATION OF GOVERNMENT CORNER

County of Anoka

State of Minnesota

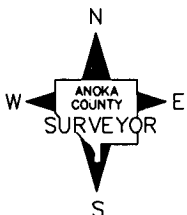
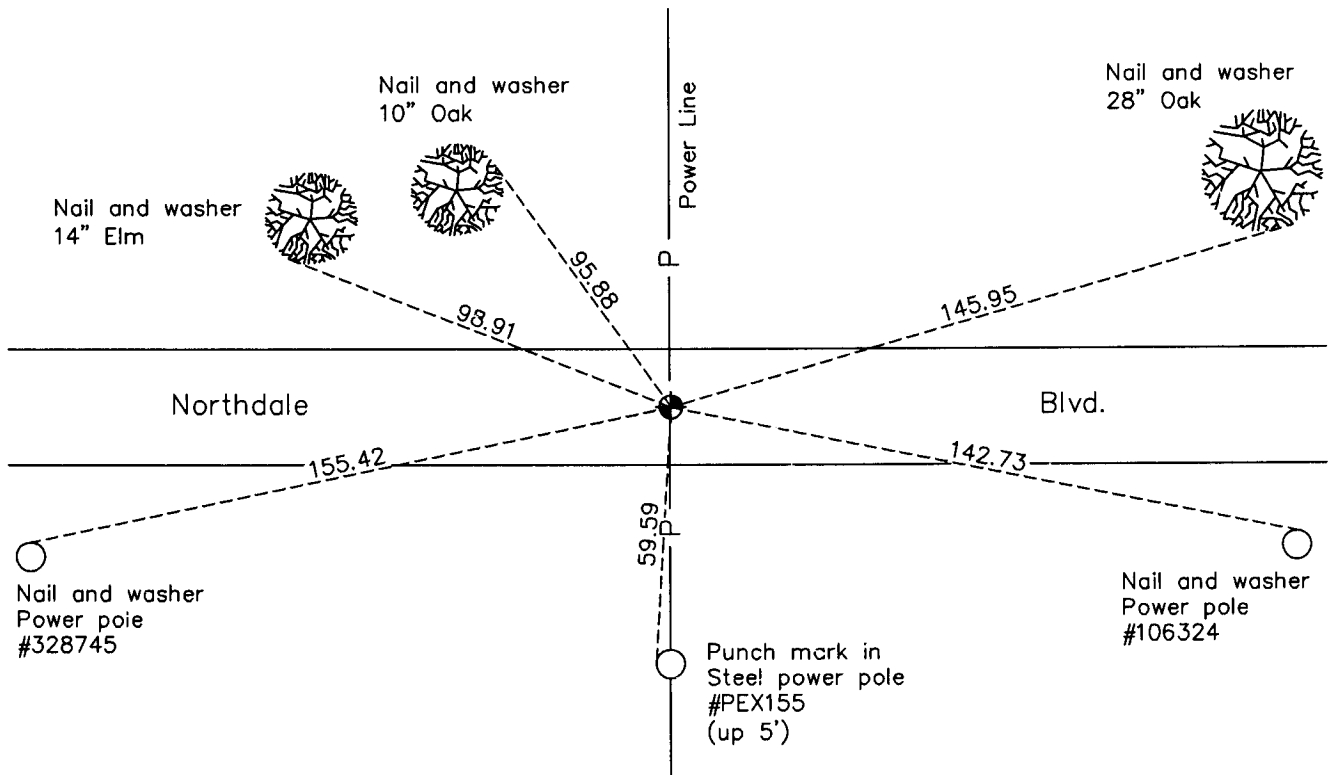
Southwest Corner of Sec. 11 Township 31 Range 24

On the 5th day of June, 1965, the described corner was evidenced by a concrete monument

and to perpetuate the location of said corner, at the exact location thereof, a permanent marker was placed consisting of a cast iron monument

AND on the 16th day of March, 2010, said permanent marker was found and the ties were updated

Updated reference ties are as shown below.



Revision Date
5/05/10

N.A.D. 1983 Coordinates
(1996 Adjustment)

County Project Coordinates	
Northing	<u>153723.7169</u>
Easting	<u>489596.1393</u>
Date	<u>8/03/01</u>

I hereby certify that this United States public land survey monument record is correct and complete to the best of my knowledge and belief.

Larry D. Hoium Date 5/05/10

Larry D. Hoium, Anoka County Surveyor

Minnesota License Number 18165

HISTORY OF GOVERNMENT CORNER

Page No. 50

County of Anoka

State of Minnesota

Southwest Corner of Sec. 11 Township 31 Range 24

CORNER HISTORY:

November 26, 1943 - H.A. Cartwright found concrete monument. Established ties to monument.

July 1957 - Minder Engineering Company found concrete monument and updated ties.

May 22, 1959 - Found concrete monument and updated ties.

June 5, 1964 - Found 4' iron pipe (down 0.6'±) 0.2'± north of concrete monument (down 2'±). Replaced iron pipe with a cast iron monument set flush with the surface. Updated ties.

July 13, 1966 - Found cast iron monument flush with the surface and updated ties.

June 22, 1970 - Found cast iron monument 2'± south of centerline and raised the monument to the surface. Set P.K. nails 2.00' north and east and updated ties.

July 8, 1974 - Found cast iron monument and updated ties.

June 21, 1977 - Found cast iron monument and updated ties.

July 22, 1983 - Found cast iron monument and updated ties.

June 13, 1986 - Found cast iron monument and updated ties.

August 11, 1994 - Found cast iron monument and updated ties.

August 3, 2001 - Found cast iron monument and established NAD 1983 (1996 Adjustment) Anoka County Project Coordinates by Static GPS methods. Updated ties.

March 16, 2010 - Found cast iron monument and updated ties.