

CERTIFICATE OF LOCATION OF GOVERNMENT CORNER

County of Anoka

State of Minnesota

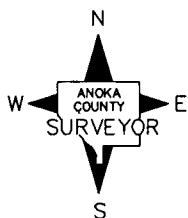
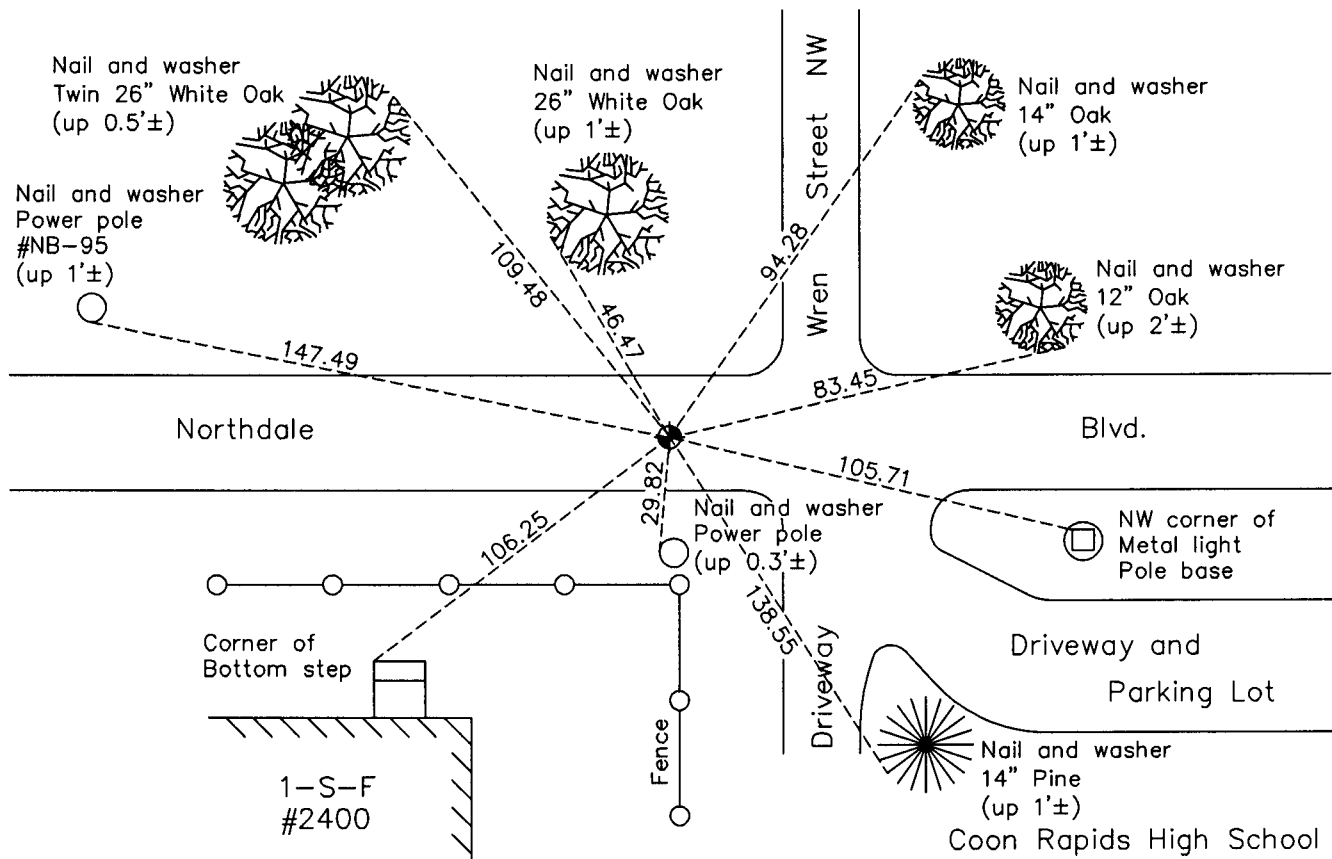
Northwest Corner of Sec. 15 Township 31 Range 24

On the 19th day of July, 1960, the described corner was evidenced by a concrete monument

and to perpetuate the location of said corner, at the exact location thereof, a permanent marker was placed consisting of a cast iron monument set flush on top of broken off concrete monument

AND on the 15th day of July, 2010, said permanent marker was found, raised to the surface after construction and the ties were updated

Updated reference ties are as shown below.



Revision Date
7/19/11

N.A.D. 1983 Coordinates
(1996 Adjustment)

County Project Coordinates	
Northing	153888.5586
Easting	484280.1507
Date	8/23/01

I hereby certify that this United States public land survey monument record is correct and complete to the best of my knowledge and belief.

Larry D. Hoium Date 7/19/11

Larry D. Hoium, Anoka County Surveyor
Minnesota License Number 18165

HISTORY OF GOVERNMENT CORNER

Page No. 52

County of Anoka

State of Minnesota

Northwest Corner of Sec. 15 Township 31 Range 24

CORNER HISTORY:

May 20, 1944 - H.A. Cartwright found concrete monument set down 1.7'±. Established ties to monument.

July 19, 1960 - Found concrete monument down 1.35' with an iron pipe on the north side and updated ties. Monument is 1'± north of centerline.

June 8, 1964 - Found concrete monument and updated ties.

July 13, 1966 - Found concrete monument and set an iron pipe over the top center of the monument flush with the surface and updated ties.

July 24, 1970 - Found concrete monument and updated ties.

July 11, 1974 - Set cast iron monument over broken off concrete monument and flush with the surface. Updated ties.

June 21, 1977 - Found cast iron monument and updated ties.

June 26, 1980 - Found cast iron monument and updated ties.

July 18, 1983 - Found cast iron monument and updated ties.

June 13, 1986 - Found cast iron monument and updated ties.

August 12, 1994 - Found cast iron monument and updated ties.

August 23, 2001 - Found cast iron monument and established NAD 1983 (1996 Adjustment) Anoka County Project Coordinates by Static GPS methods. Updated ties.

July 15, 2010 - Found cast iron monument and raised it to the surface after construction. Updated ties.