

CERTIFICATE OF LOCATION OF GOVERNMENT CORNER

County of Anoka

State of Minnesota

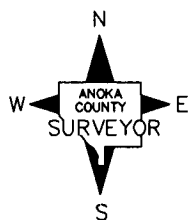
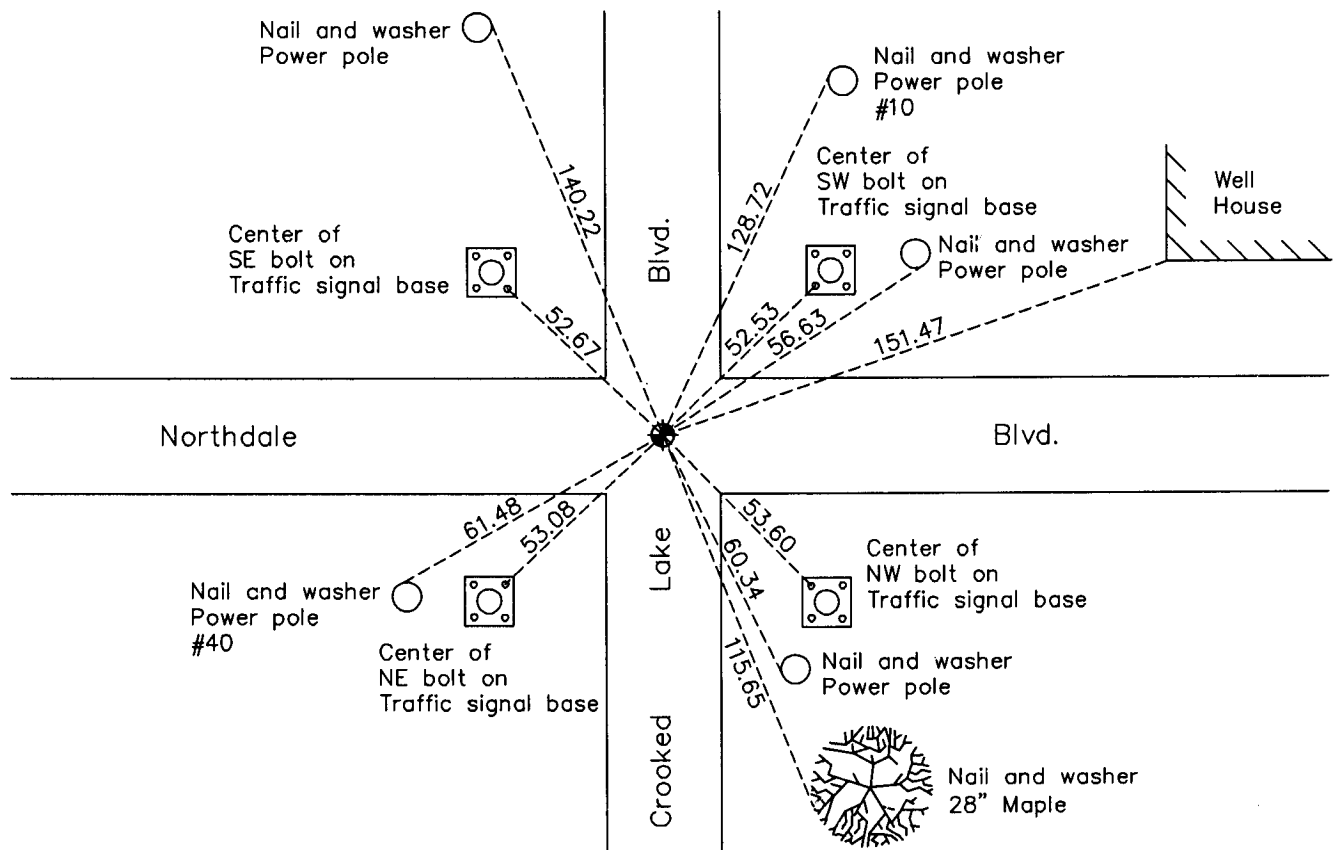
South 1/4 Corner of Sec. 9 Township 31 Range 24

On the 15th day of July, 1960, the described corner was evidenced by a concrete monument

and to perpetuate the location of said corner, at the exact location thereof, a permanent marker was placed consisting of a cast iron monument

AND on the 24th day of March, 2010, said permanent marker was found flush and the ties were updated

Updated reference ties are as shown below.



N.A.D. 1983 Coordinates
(1996 Adjustment)

County Project Coordinates	
Northing	153891.9774
Easting	481647.5175
Date	8/23/01

Revision Date
5/12/10

I hereby certify that this United States public land survey monument record is correct and complete to the best of my knowledge and belief.

Larry D. Hoium Date 5/12/10

Larry D. Hoium, Anoka County Surveyor
Minnesota License Number 18165

HISTORY OF GOVERNMENT CORNER

Page No. 53

County of Anoka

State of Minnesota

South 1/4 Corner of Sec. 9 Township 31 Range 24

CORNER HISTORY:

May 20, 1944 - H.A. Cartwright found concrete monument down 1.0'±. Established ties to monument.

October 7, 1958 - Harry S. Johnson found concrete monument and updated ties.

July 15, 1960 - Found concrete monument down 1.0'± with a railroad spike on the south side and an iron pipe on center of monument flush with the surface. Updated ties.

June 4, 1964 - Found iron pipe on top of concrete monument and updated ties.

August 21, 1964 - Set cast iron monument on top of concrete monument in centerline-centerline of new road and updated ties.

July 13, 1966 - Found cast iron monument and updated ties.

July 24, 1970 - Found cast iron monument and concrete monument missing. Reset position of corner with a cast iron monument set flush with the surface using ties. Set P.K. nails 2.00' north and east and updated ties.

July 2, 1974 - Found cast iron monument and raised it to the surface. Updated ties.

June 21, 1977 - Found cast iron monument and raised it to the surface. Set P.K. nails north and east and updated ties.

July 2, 1980 - Replaced broken cast iron monument with a new cast iron monument set flush with the surface. Updated ties.

July 18, 1983 - Found cast iron monument and updated ties.

June 13, 1986 - Found cast iron monument and updated ties.

August 12, 1994 - Found cast iron monument and updated ties.

August 29, 1995 - Found cast iron monument and raised it to the surface. Updated ties.

August 23, 2001 - Found cast iron monument and established NAD 1983 (1996 Adjustment) Anoka County Project Coordinates by Static GPS methods. Updated ties.

March 24, 2010 - Found cast iron monument flush with the surface and updated ties.