

# CERTIFICATE OF LOCATION OF GOVERNMENT CORNER

County of Anoka

State of Minnesota

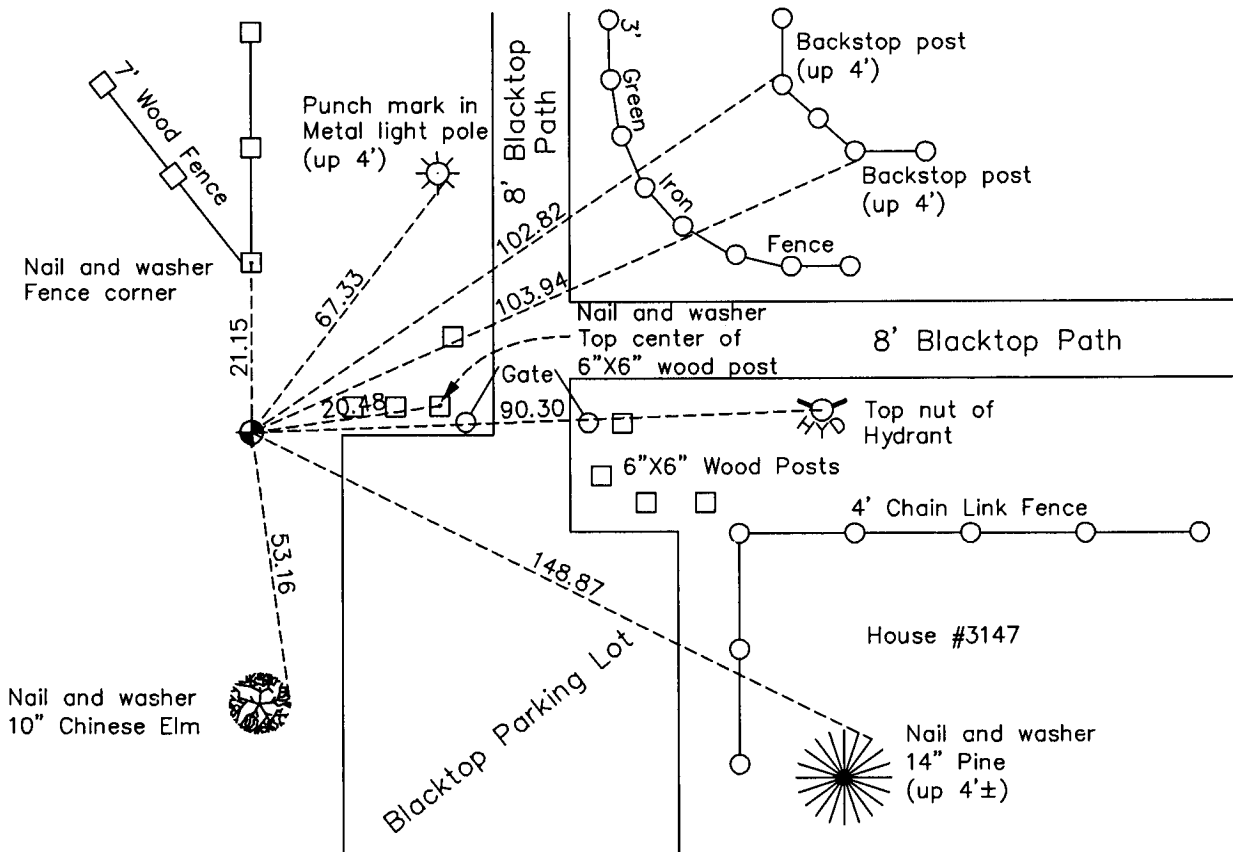
## Northwest Corner of Sec. 16 Township 31 Range 24

On the 25th day of February, 1960, the described corner was evidenced by a concrete monument

and to perpetuate the location of said corner, at the exact location thereof, a permanent marker was placed consisting of a cast iron monument

AND on the 18th day of February, 2010, said permanent marker was found and the ties were updated

Updated reference ties are as shown below.



Revision Date

5/12/10

N.A.D. 1983 Coordinates  
(1996 Adjustment)

County Project Coordinates	
Northing	153891.6514
Easting	479014.8898
Date	8/30/01

I hereby certify that this United States public land survey monument record is correct and complete to the best of my knowledge and belief.

*Larry D. Hoium* Date 5/12/10

Larry D. Hoium, Anoka County Surveyor

Minnesota License Number 18165

# HISTORY OF GOVERNMENT CORNER

County of Anoka

State of Minnesota

## Northwest Corner of Sec. 16 Township 31 Range 24

### **CORNER HISTORY:**

May 20, 1944 - H.A. Cartwright found concrete monument set flush with the surface. Established ties to monument.

September 1959 - Clyde H. Parker found concrete monument and updated ties.

February 15, 1960 - Found concrete monument flush with the surface and updated ties.

June 4, 1964 - Found concrete monument down 0.5'± and updated ties.

July 14, 1966 - Found concrete monument and updated ties.

July 27, 1970 - Found concrete monument missing. Reset position of corner with cast iron monument set down 0.2'± using ties. Updated ties.

July 8, 1974 - Found cast iron monument and updated ties.

June 21, 1977 - Found cast iron monument and updated ties.

June 26, 1980 - Found cast iron monument and updated ties.

August 14, 1990 - Found cast iron monument and updated ties.

August 16, 1994 - Found cast iron monument and updated ties.

May 10, 2001 - Found cast iron monument and established NAD 1983 ( 1996 Adjustment) Anoka County Project Coordinates by Static GPS methods. Updated ties.

February 18, 2010 - Found cast iron monument and updated ties.