

CERTIFICATE OF LOCATION OF GOVERNMENT CORNER

County of Anoka

State of Minnesota

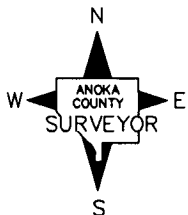
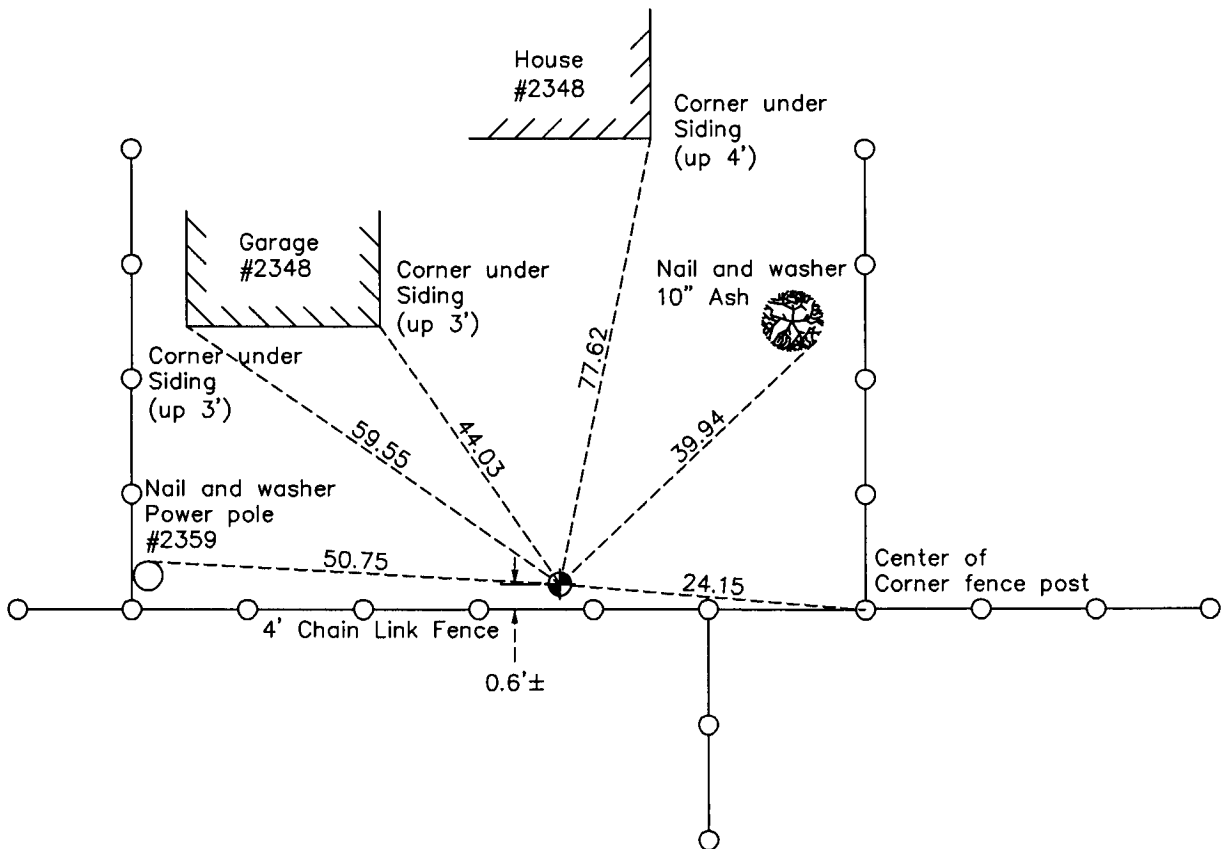
East 1/4 Corner of Sec. 16 Township 31 Range 24

On the 5th day of June, 1964, the described corner was evidenced by a concrete monument

and to perpetuate the location of said corner, at the exact location thereof, a permanent marker was placed consisting of a cast iron monument

AND on the 24th day of March, 2010, said permanent marker was found and the ties were updated

Updated reference ties are as shown below.



N.A.D. 1983 Coordinates
(1996 Adjustment)

County Project Coordinates	
Northing	151236.9274
Easting	484208.7297
Date	10/11/01

Revision Date
5/13/10

I hereby certify that this United States public land survey monument record is correct and complete to the best of my knowledge and belief.

Larry D. Hoium Date 5/13/10

Larry D. Hoium, Anoka County Surveyor
Minnesota License Number 18165

HISTORY OF GOVERNMENT CORNER

County of Anoka

State of Minnesota

East 1/4 Corner of Sec. 16 Township 31 Range 24

CORNER HISTORY:

May 28, 1944 - H.A. Cartwright found concrete monument down 15". Established ties to monument.

October 7, 1958 - Don Coulter for Harry S. Johnson Assoc. found concrete monument 1.5' below surface and updated ties.

August 10, 1960 - Found concrete monument and set four iron pipe straddles for correct location .

August 24, 1960 - Found concrete monument and updated ties.

March 15, 1963 - Found concrete monument with an iron pipe on the east side and updated ties.

June 5, 1964 - Found concrete monument down 0.5' with an iron pipe on the east side and updated ties.

July 13, 1966 - Found concrete monument down 0.5' with an iron pipe on the east side and updated ties.

August 3, 1970 - Found concrete monument with an iron pipe on the east side and updated ties.

July 12, 1974 - Replaced broken off concrete monument with cast iron monument set down 0.2'±. Updated ties.

June 21, 1977 - Found cast iron monument and updated ties.

July 7, 1980 - Found cast iron monument and updated ties.

August 14, 1990 - Found cast iron monument and updated ties.

August 16, 1994 - Found cast iron monument and updated ties.

October 11, 2001 - Found cast iron monument and established NAD 1983 (1996 Adjustment) Anoka County Project Coordinates by Static GPS methods. Updated ties.

March 24, 2010 - Found cast iron monument and updated ties.