

CERTIFICATE OF LOCATION OF GOVERNMENT CORNER

County of Anoka

State of Minnesota

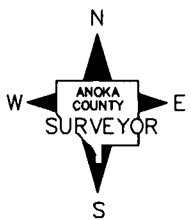
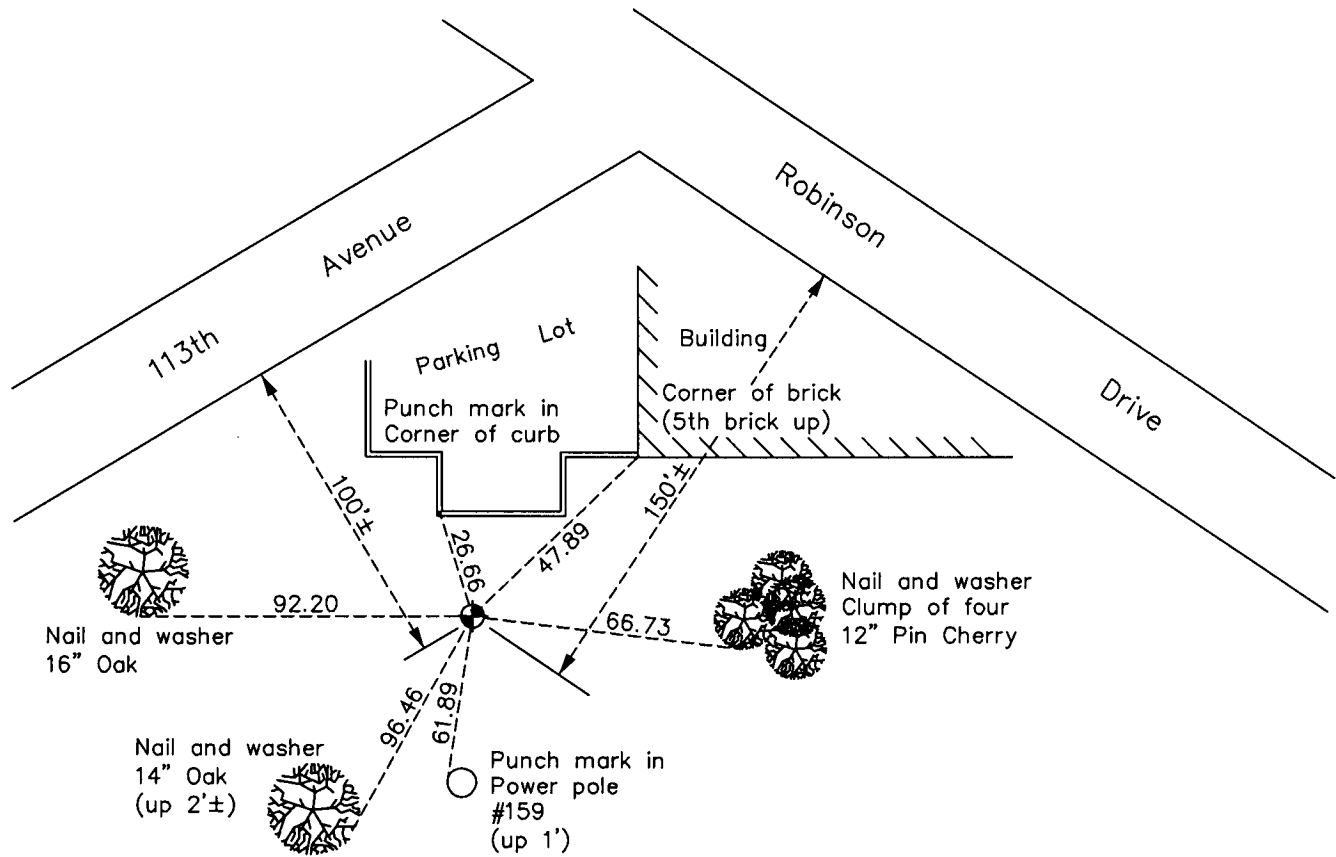
East 1/4 Corner of Sec. 15 Township 31 Range 24

On the 1st day of August, 1960, the described corner was evidenced by a cast iron monument (Judicial Landmark)

and to perpetuate the location of said corner, at the exact location thereof, a permanent marker was placed consisting of the same cast iron monument (Judicial Landmark)

AND on the 23rd day of March, 2010, said permanent marker was found down 1.1' and the ties were updated. An underground sprinkler line is over the monument.

Updated reference ties are as shown below.



N.A.D. 1983 Coordinates
(1996 Adjustment)

County Project Coordinates	
Northing	151108.2239
Easting	489548.0265
Date	8/03/01

Revision Date
5/13/10

I hereby certify that this United States public land survey monument record is correct and complete to the best of my knowledge and belief.

Larry D. Hoium Date 5/13/10

Larry D. Hoium, Anoka County Surveyor

Minnesota License Number 18165

HISTORY OF GOVERNMENT CORNER

Page No. 60

County of Anoka

State of Minnesota

East 1/4 Corner of Sec. 15 Township 31 Range 24

CORNER HISTORY:

November 10, 1944 - H.A. Cartwright found concrete monument set flush with the surface under center of stone. Established ties to monument.

August 1, 1960 - Found concrete monument set flush with the surface with an iron pipe on the north side and updated ties.

June 16, 1964 - Found cast iron Judicial Landmark set flush with the surface and updated ties.

July 18, 1966 - Found cast iron Judicial Landmark and updated ties.

July 29, 1970 - Found cast iron Judicial Landmark set flush with the surface and updated ties. Monument is 2'± east of power pole line.

July 9, 1974 - Found cast iron Judicial Landmark and updated ties.

June 21, 1977 - Found cast iron Judicial Landmark and updated ties.

July 1, 1980 - Found cast iron Judicial Landmark and updated ties.

July 22, 1983 - Found cast iron Judicial Landmark and updated ties.

June 19, 1986 - Found cast iron Judicial Landmark and updated ties.

August 11, 1994 - Found cast iron Judicial Landmark and updated ties.

August 3, 2001 - Found cast iron Judicial Landmark and established NAD 1983 (1996 Adjustment) Anoka County Project Coordinates by Static GPS methods. Updated ties.

March 23, 2010 - Found cast iron Judicial Landmark down 1.1' and updated ties. An underground sprinkler line is over the monument.