

# CERTIFICATE OF LOCATION OF GOVERNMENT CORNER

County of Anoka

State of Minnesota

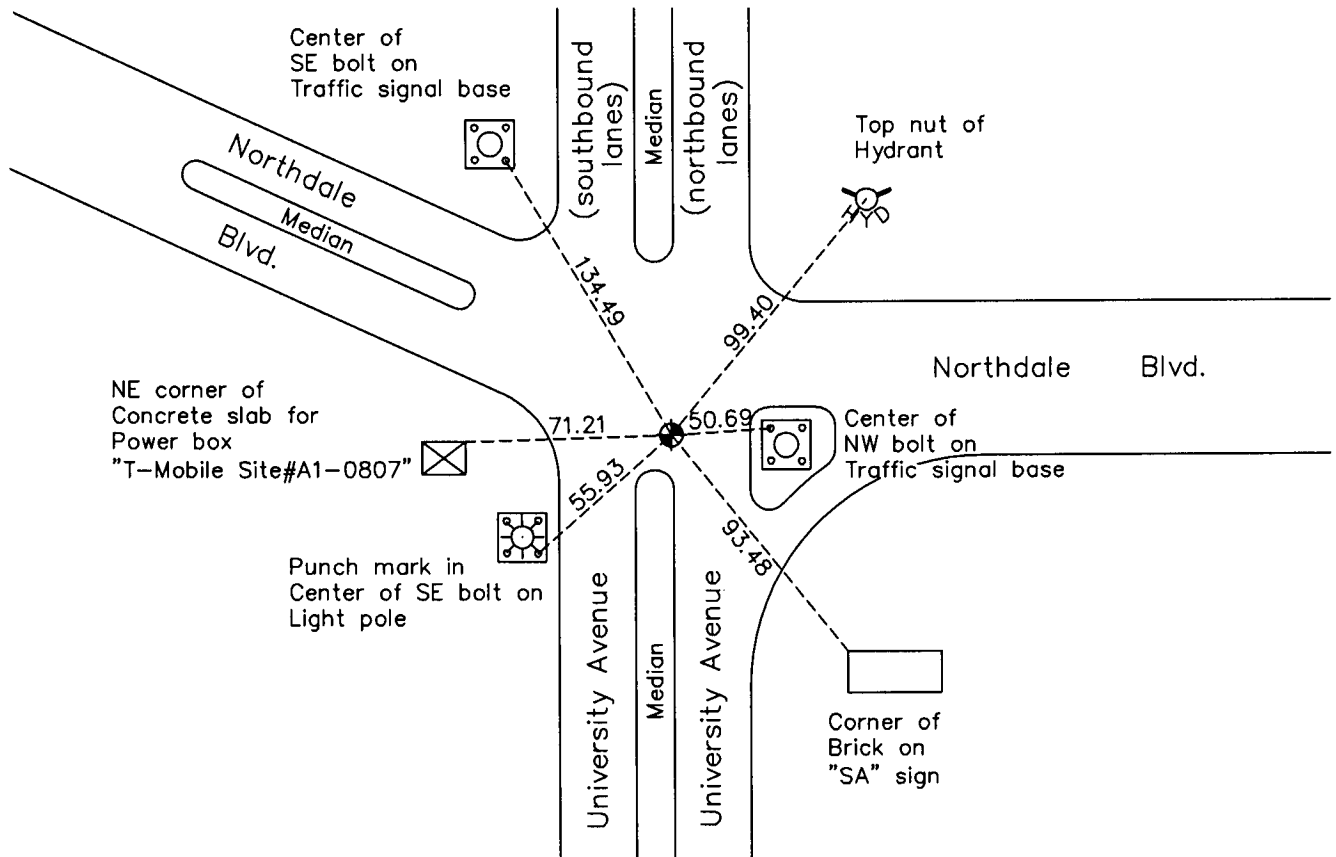
## Northeast Corner of Sec. 24 Township 31 Range 24

On the 23rd day of February, 1960, the described corner was evidenced by a granite monument

and to perpetuate the location of said corner, at the exact location thereof, a permanent marker was placed consisting of a cast iron monument

AND on the \_\_\_\_ day of March, 2010, said permanent marker was found and the ties were updated

Updated reference ties are as shown below.



N  
  
 ANOKA COUNTY SURVEYOR  
 S  
 Revision Date  
5/17/10

N.A.D. 1983 Coordinates  
(1996 Adjustment)

County Project Coordinates	
Northing	148408.6215
Easting	500102.9704
Date	6/11/98

I hereby certify that this United States public land survey monument record is correct and complete to the best of my knowledge and belief.

*Larry D. Hoium* Date 5/17/10

Larry D. Hoium, Anoka County Surveyor  
 Minnesota License Number 18165

# HISTORY OF GOVERNMENT CORNER

Page No. 64

County of Anoka

State of Minnesota

## Northeast Corner of Sec. 24 Township 31 Range 24

### **CORNER HISTORY:**

June 7, 1943 - H.A. Cartwright found granite monument set down 4". Established ties to monument.

September 1954 - Harold Wilke found granite monument and updated ties.

February 23, 1960 - Found granite monument set down 5" with a short iron pipe over center of monument and updated ties.

September 24, 1962 - N.C. Hoium found concrete ( granite) monument and updated ties.

June 26, 1964 - Found granite monument set down 5" with an iron pipe flush with the blacktop and set P.K. nails 2.00' north and east. Updated ties.

July 11, 1966 - Found granite monument with iron pipe over center of monument and updated ties.

June 19, 1968 - Found granite monument with iron pipe over center of monument and updated ties.

August 29, 1968 - Found granite monument laying over. Replaced granite monument with a cast iron monument set flush with the surface and set P.K. nails 2.00' north and west. Updated ties.

July 16, 1974 - Found cast iron monument and updated ties.

June 22, 1977 - Found cast iron monument and updated ties.

July 27, 1978 - Found cast iron monument and updated ties.

July 8, 1980 - Found cast iron monument and updated ties.

November 18, 1980 - Found cast iron monument and updated ties.

Date unknown - Set construction ties prior to road construction.

October 28, 1986 - Set cast iron monument after road construction using construction ties.

February 14, 1992 - Found cast iron monument and updated ties.

August 8, 1994 - Found cast iron monument and updated ties.

June 11, 1998 - Found cast iron monument and established NAD 1983 ( 1996 Adjustment) Anoka County Project Coordinates by Static GPS methods.

December 15, 1998 - Found cast iron monument and updated ties.

March 2010 - Found cast iron monument and updated ties.