

CERTIFICATE OF LOCATION OF GOVERNMENT CORNER

County of Anoka

State of Minnesota

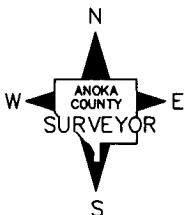
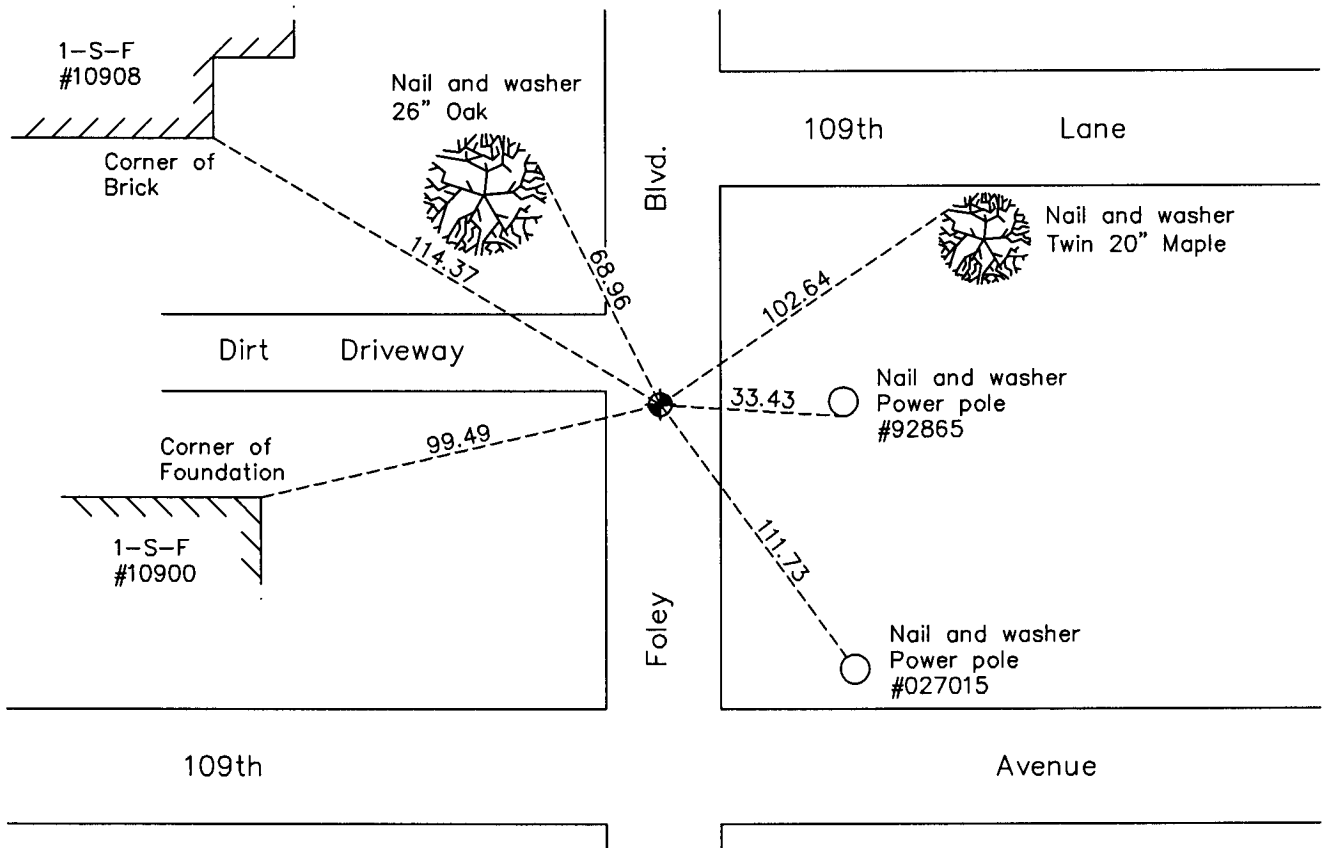
South 1/4 Corner of Sec. 13 Township 31 Range 24

On the 24th day of February, 1960, the described corner was evidenced by a concrete monument

and to perpetuate the location of said corner, at the exact location thereof, a permanent marker was placed consisting of a cast iron monument

AND on the 18th day of March, 2010, said permanent marker was found and the ties were updated

Updated reference ties are as shown below.



Revision Date
5/17/10

N.A.D. 1983 Coordinates
(1996 Adjustment)

County Project Coordinates	
Northing	148368.9949
Easting	497436.1709
Date	8/02/01

I hereby certify that this United States public land survey monument record is correct and complete to the best of my knowledge and belief.

Larry D. Hoium Date 5/17/10

Larry D. Hoium, Anoka County Surveyor
Minnesota License Number 18165

HISTORY OF GOVERNMENT CORNER

Page No. 65

County of Anoka

State of Minnesota

South 1/4 Corner of Sec. 13 Township 31 Range 24

CORNER HISTORY:

June 5, 1943 - H.A. Cartwright found concrete monument set down 5". Established ties to monument.

July 1955 - Minder Engineering Company found concrete monument set down 2". Set iron pipe on south side of monument and updated ties.

February 24, 1960 - Found concrete monument set down 0.3' with iron pipe on south side and updated ties.

August 27, 1962 - Found concrete monument set down 0.3' and updated ties. Monument to be removed.

October 31, 1962 - Replaced concrete monument with a cast iron monument and updated ties.

July 21, 1966 - Set cast iron monument after road construction and set P.K. nails 2.00' north and east. Updated ties. Monument is in centerline of road.

July 30, 1970 - Raised cast iron monument 1" and updated ties.

July 11, 1974 - Found cast iron monument and updated ties.

June 22, 1977 - Found cast iron monument and updated ties.

July 9, 1980 - Found cast iron monument and updated ties.

June 13, 1986 - Found cast iron monument and updated ties.

August 23, 1990 - Found cast iron monument and updated ties.

August 9, 1994 - Found cast iron monument and updated ties.

August 2, 2001 - Found cast iron monument and established NAD 1983 (1996 Adjustment) Anoka County Project Coordinates by Static GPS methods. Updated ties.

March 18, 2010 - Found cast iron monument and updated ties.