

# CERTIFICATE OF LOCATION OF GOVERNMENT CORNER

County of Anoka

State of Minnesota

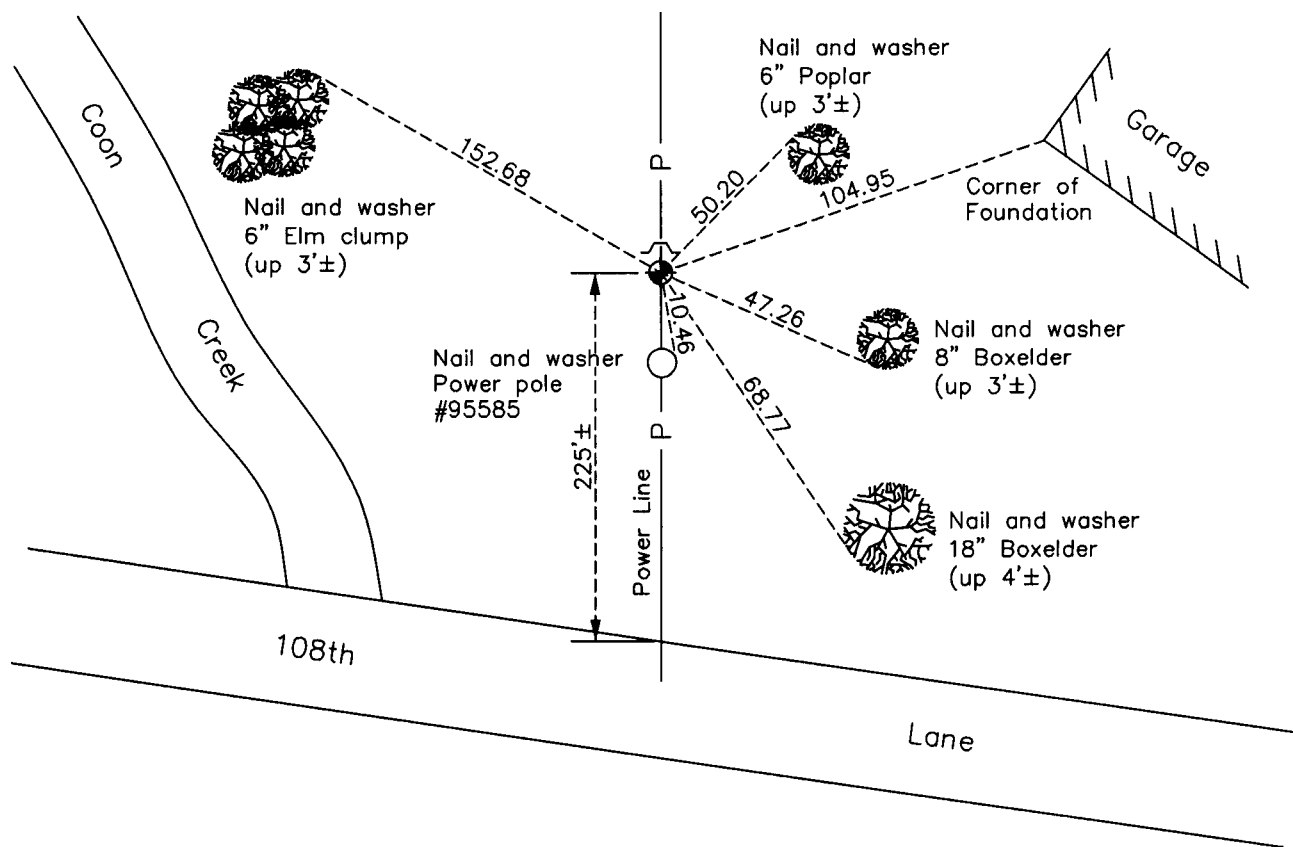
## Southeast Corner of Sec. 15 Township 31 Range 24

On the 24th day of October, 1963, the described corner was evidenced by area resurvey

and to perpetuate the location of said corner, at the exact location thereof, a permanent marker was placed consisting of a red and white iron pipe

AND on the 8th day of February, 2011, said permanent marker was replaced with red & white 2" sq. steel Telspar mont. up 0.7'± with punched 'County Surveyor' cap. Sign & post on north side.

Updated reference ties are as shown below.



ANOKA COUNTY SURVEYOR

Revision Date

3/07/11

N.A.D. 1983 Coordinates  
(1996 Adjustment)

| County Project Coordinates |             |
|----------------------------|-------------|
| Northing                   | 148443.4130 |
| Easting                    | 489522.8802 |
| Date                       | 10/23/01    |

I hereby certify that this United States public land survey monument record is correct and complete to the best of my knowledge and belief.

*Larry D. Hoium* Date 3/07/11

Larry D. Hoium, Anoka County Surveyor

Minnesota License Number 18165

# HISTORY OF GOVERNMENT CORNER

Page No. 68

County of Anoka

State of Minnesota

## Southeast Corner of Sec. 15 Township 31 Range 24

### **CORNER HISTORY:**

August 1, 1960 - Found 1-1/2" iron pipe set up 6". Established ties to monument.

October 24, 1963 - Set 1-1/2"x9' iron pipe (painted with 6" red and white bands) set up 4.5'±.

June 3, 1964 - Found 1-1/2" red and white iron pipe and updated ties.

July 15, 1966 - Found 1-1/2" red and white iron pipe and updated ties.

July 30, 1970 - Found 1-1/2" red and white iron pipe up 3.5'± and updated ties.

June 22, 1977 - Found 1-1/2" red and white iron pipe and updated ties.

July 1, 1980 - Found 1-1/2" red and white iron pipe and updated ties.

July 26, 1983 - Found 1-1/2" red and white iron pipe and updated ties.

September 12, 1986 - Found 1-1/2" red and white iron pipe and updated ties.

August 24, 1990 - Found 1-1/2" red and white iron pipe up 1'± and updated ties.

August 22, 1994 - Found 1-1/2" red and white iron pipe up 1'± and updated ties.

October 23, 2001 - Found 1-1/2" red and white iron pipe and established NAD 1983 (1996 Adjustment) Anoka County Project Coordinates by Static GPS methods. Updated ties.

February 8, 2011 - Replaced 1-1/2" red and white iron pipe with a red and white 2" square steel Telspar monument set up 0.7'± with a punched 'County Surveyor' cap. Set sign and post on north side and updated ties.