

CERTIFICATE OF LOCATION OF GOVERNMENT CORNER

County of Anoka

State of Minnesota

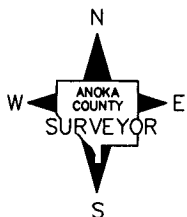
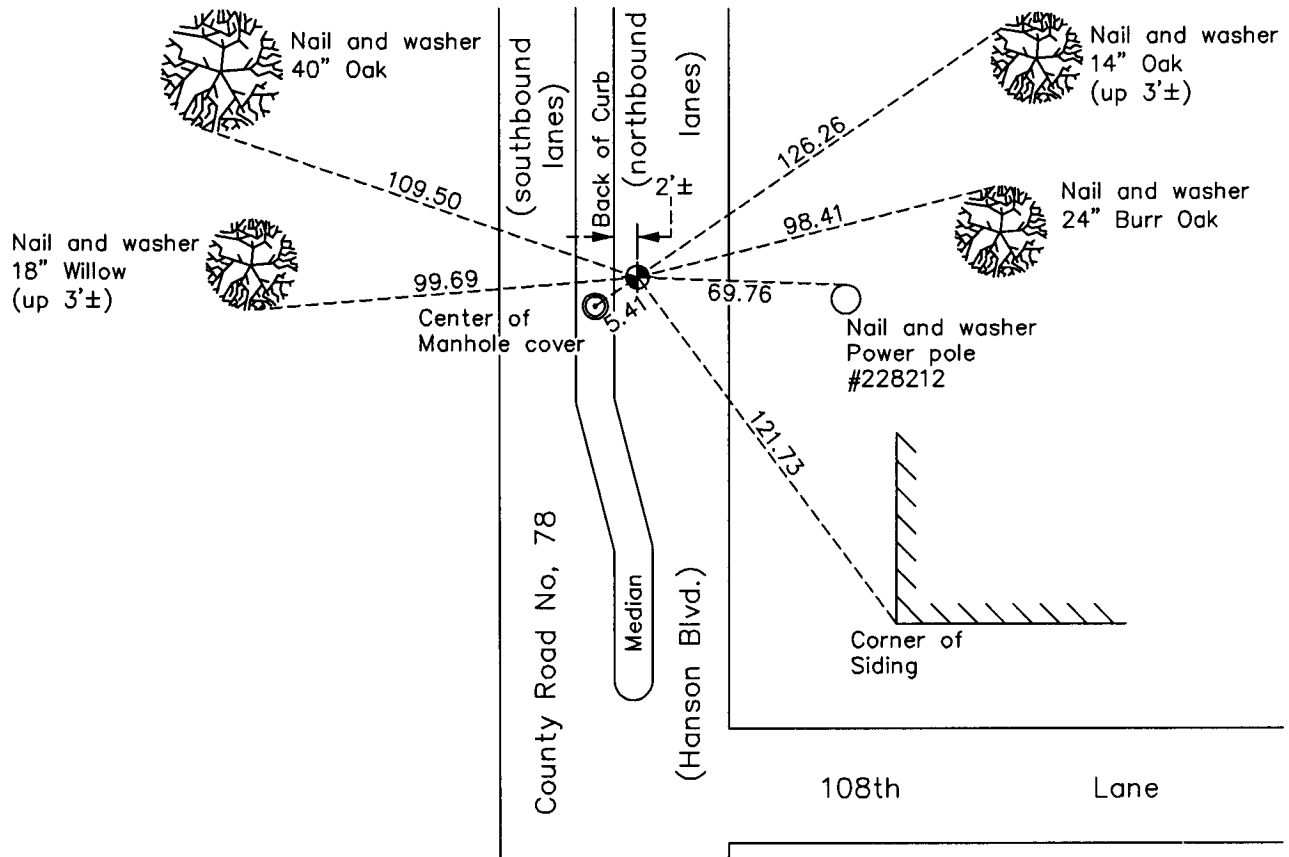
North 1/4 Corner of Sec. 22 Township 31 Range 24

On the 28th day of July, 1960, the described corner was evidenced by a concrete monument

and to perpetuate the location of said corner, at the exact location thereof, a permanent marker was placed consisting of a cast iron monument

AND on the 29th day of March, 2010, said permanent marker was found and the ties were updated

Updated reference ties are as shown below.



N.A.D. 1983 Coordinates
(1996 Adjustment)

County Project Coordinates

Northing 148505.8359

Easting 486802.9462

Date 8/06/01

Revision Date

5/18/10

I hereby certify that this United States public land survey monument record is correct and complete to the best of my knowledge and belief.

Larry D. Hoium Date 5/18/10

Larry D. Hoium, Anoka County Surveyor

Minnesota License Number 18165

HISTORY OF GOVERNMENT CORNER

County of Anoka

State of Minnesota

North 1/4 Corner of Sec. 22 Township 31 Range 24

CORNER HISTORY:

November 9, 1944 - H.A. Cartwright found concrete monument set down 0.5'. Established ties to monument.

July 28, 1960 - Found concrete monument down 1' with an open end iron pipe set over center of monument. Updated ties.

June 17, 1964 - Found concrete monument and updated ties.

July 13, 1966 - Found concrete monument and updated ties.

August 1, 1968 - Found concrete monument and updated ties prior to road construction.

July 2, 1970 - Set P.K. nail in corner location and set P.K.nails 2.00' north and east.

July 13, 1970 - Set cast iron monument flush with the surface after road construction and updated ties .

July 16, 1974 - Found cast iron monument and updated ties.

June 22, 1977 - Found cast iron monument and updated ties.

July 1, 1980 - Found cast iron monument and updated ties.

June 17, 1986 - Found cast iron monument and updated ties.

August 16, 1994 - Found cast iron monument and updated ties.

March 15, 2000 - Set construction ties and removed cast iron monument prior to road construction.

August 6, 2001 - Found cast iron monument (date reset unknown) and established NAD 1983 (1996 Adjustment) Anoka County Project Coordinates by Static GPS methods. Updated ties.

March 29, 2010 - Found cast iron monument and updated ties.