

# CERTIFICATE OF LOCATION OF GOVERNMENT CORNER

County of Anoka

State of Minnesota

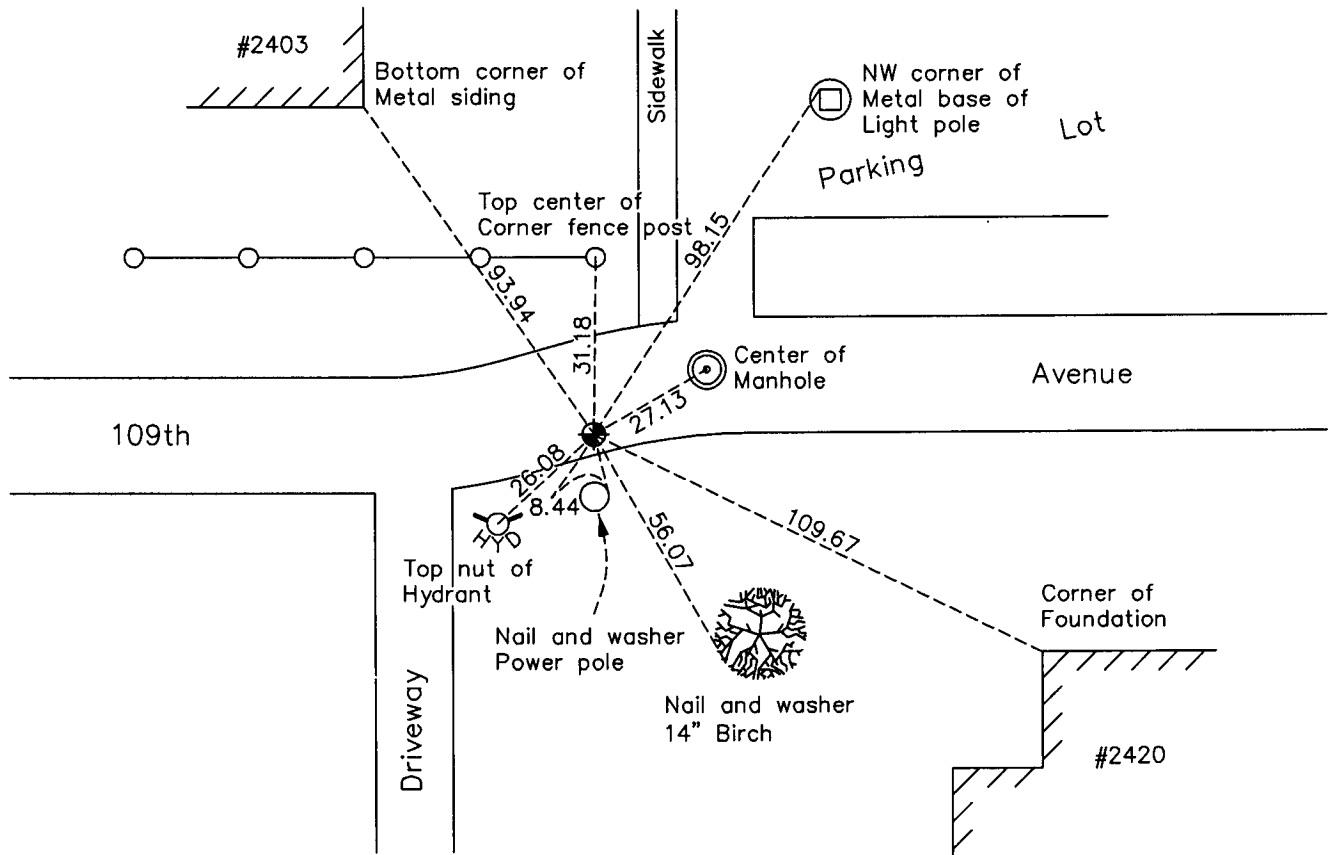
## Northwest Corner of Sec. 22 Township 31 Range 24

On the 28th day of July, 1960, the described corner was evidenced by a concrete monument

and to perpetuate the location of said corner, at the exact location thereof, a permanent marker was placed consisting of a cast iron monument

AND on the 10th day of March, 2010, said permanent marker was found and the ties were updated

Updated reference ties are as shown below.



**ANOKA COUNTY SURVEYOR**

Revision Date 5/18/10

N.A.D. 1983 Coordinates  
(1996 Adjustment)

County Project Coordinates	
Northing	148591.7333
Easting	484137.5277
Date	8/14/01

I hereby certify that this United States public land survey monument record is correct and complete to the best of my knowledge and belief.

*Larry D. Hoium* Date 5/18/10

Larry D. Hoium, Anoka County Surveyor  
Minnesota License Number 18165

# HISTORY OF GOVERNMENT CORNER

Page No. 70

County of Anoka

State of Minnesota

## Northwest Corner of Sec. 22 Township 31 Range 24

### **CORNER HISTORY:**

May 20, 1944 - H.A. Cartwright found monument (type unknown) . Established ties to monument.

July 28, 1960 - Found concrete monument set down 0.3'. Set an open end iron pipe on north side flush with monument and updated ties.

June 5, 1964 - Found concrete monument and updated ties.

July 13, 1966 - Found concrete monument and updated ties.

July 31, 1969 - Set cast iron monument flush with the surface using area platting and set P.K. nails 2.00' north and east. Updated ties.

July 16, 1974 - Found cast iron monument and updated ties.

June 23, 1977 - Found cast iron monument and updated ties.

July 1, 1980 - Found cast iron monument and updated ties.

July 18, 1983 - Found cast iron monument and updated ties.

June 19, 1986 - Found cast iron monument and updated ties.

August 14, 1990 - Found cast iron monument and updated ties.

August 12, 1994 - Found cast iron monument and updated ties.

August 14, 2001 - Found cast iron monument and established NAD 1983 (1996 Adjustment) Anoka County Project Coordinates by Static GPS methods. Updated ties.

May 23, 2002 - Set construction ties and removed cast iron monument prior to road construction.

October 21, 2002 - Set cast iron monument after road construction using construction ties. Verified location of corner by Static GPS methods.

March 10, 2010 - Found cast iron monument and updated ties.