

CERTIFICATE OF LOCATION OF GOVERNMENT CORNER

County of Anoka

State of Minnesota

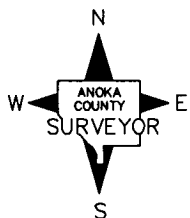
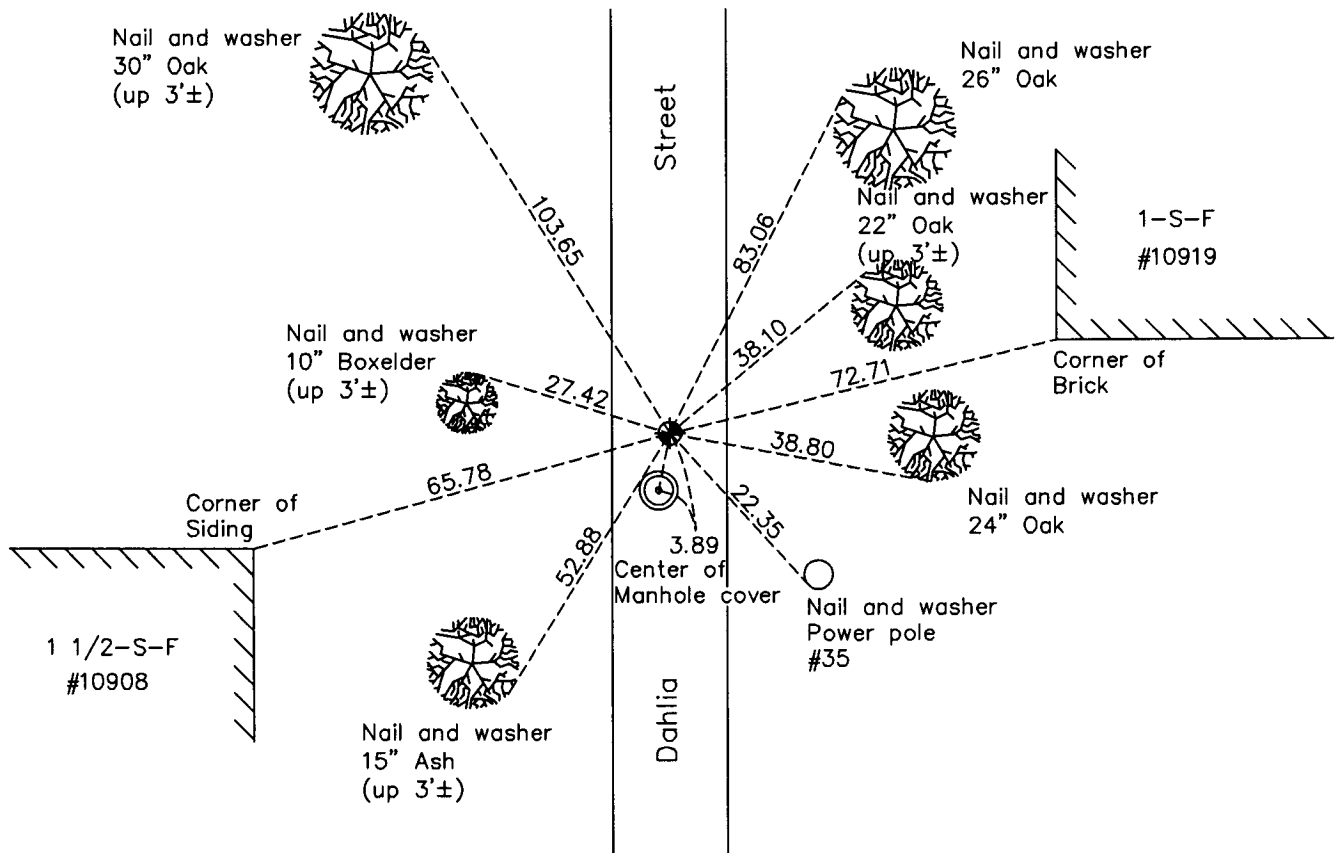
North 1/4 Corner of Sec. 21 Township 31 Range 24

On the 29th day of July, 1960, the described corner was evidenced by a concrete monument

and to perpetuate the location of said corner, at the exact location thereof, a permanent marker was placed consisting of a cast iron monument

AND on the 8th day of March, 2010, said permanent marker was found and the ties were updated

Updated reference ties are as shown below.



N.A.D. 1983 Coordinates
(1996 Adjustment)

County Project Coordinates

Northing 148580.9799

Easting 481513.9677

Date 8/30/01

Revision Date

5/18/10

I hereby certify that this United States public land survey monument record is correct and complete to the best of my knowledge and belief.

Larry D. Hoium Date 5/18/10

Larry D. Hoium, Anoka County Surveyor

Minnesota License Number 18165

HISTORY OF GOVERNMENT CORNER

County of Anoka

State of Minnesota

North 1/4 Corner of Sec. 21 Township 31 Range 24

CORNER HISTORY:

May 26, 1944 - H.A. Cartwright found concrete monument set flush with the surface. Established ties to monument.

October 7, 1958 - Don Coulter found concrete monument and updated ties.

July 29, 1960 - Found concrete monument flush with the surface with an iron pipe flush on the north side of monument. Updated ties.

June 4, 1964 - Found concrete monument and updated ties.

July 13, 1966 - Found concrete monument and updated ties.

July 29, 1970 - Found concrete monument missing. Reset position of corner with cast iron monument using ties and set P.K. nails 2.00' north and east. Updated ties.

July 16, 1974 - Found cast iron monument and updated ties.

June 23, 1977 - Found cast iron monument and updated ties.

June 26, 1980 - Found cast iron monument and updated ties.

June 13, 1986 - Found cast iron monument and updated ties.

August 21, 1994 - Found cast iron monument and updated ties.

August 30, 2001 - Found cast iron monument and established NAD 1983 (1996 Adjustment) Anoka County Project Coordinates by Static GPS methods. Updated ties.

April 10, 2006 - Found cast iron monument and updated ties.

March 8, 2010 - Found cast iron monument and updated ties.