

CERTIFICATE OF LOCATION OF GOVERNMENT CORNER

County of Anoka

State of Minnesota

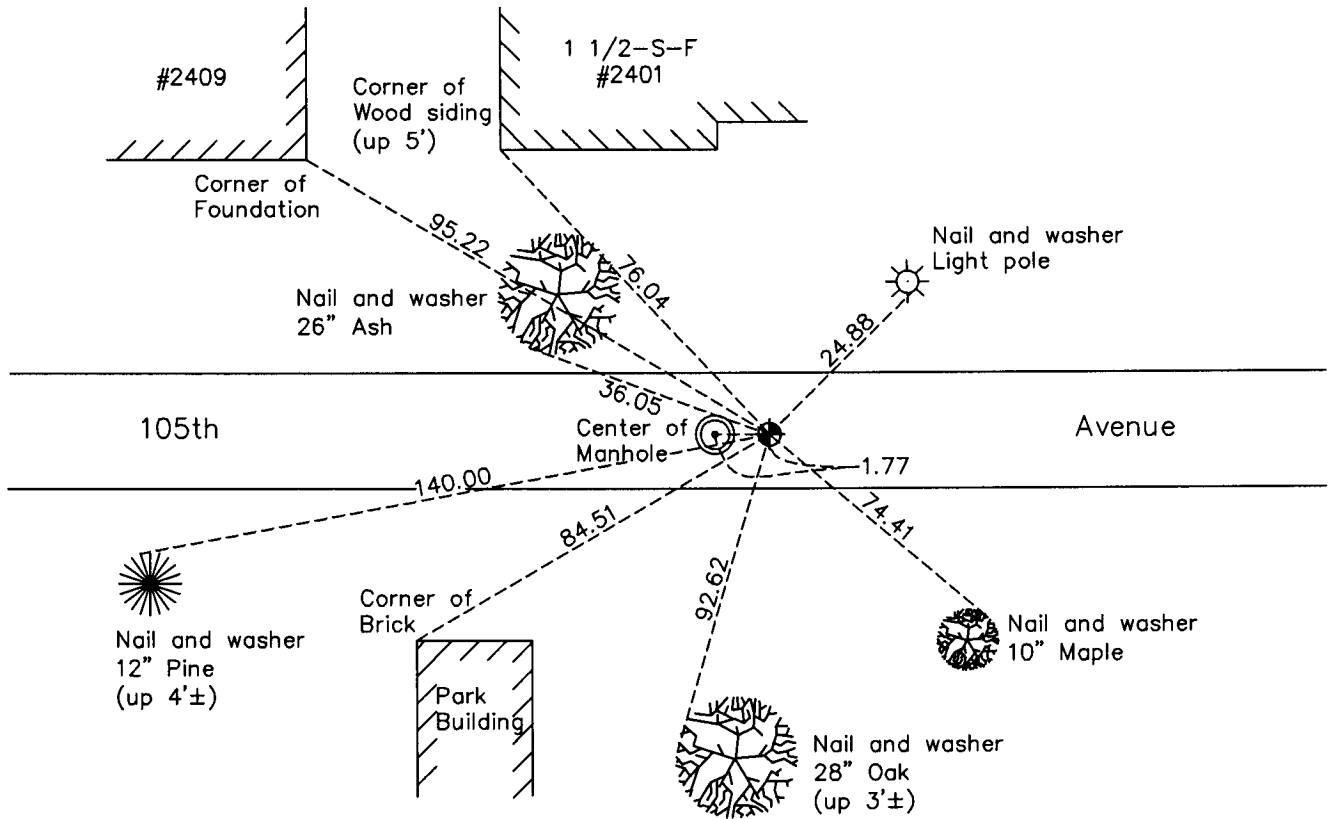
West 1/4 Corner of Sec. 22 Township 31 Range 24

On the 8th day of August, 1960, the described corner was evidenced by a concrete monument

and to perpetuate the location of said corner, at the exact location thereof, a permanent marker was placed consisting of a cast iron monument

AND on the 10th day of March, 2010, said permanent marker was found and the ties were updated

Updated reference ties are as shown below.



ANOKA COUNTY SURVEYOR

Revision Date

5/19/10

N.A.D. 1983 Coordinates
(1996 Adjustment)

County Project Coordinates	
Northing	145940.1171
Easting	484104.2675
Date	8/23/01

I hereby certify that this United States public land survey monument record is correct and complete to the best of my knowledge and belief.

Larry D. Hoium Date 5/19/10

Larry D. Hoium, Anoka County Surveyor

Minnesota License Number 18165

HISTORY OF GOVERNMENT CORNER

Page No. 74

County of Anoka

State of Minnesota

West 1/4 Corner of Sec. 22 Township 31 Range 24

CORNER HISTORY:

November 24, 1944 - H.A. Cartwright found concrete monument set down 0.3'. Established ties to monument.

August 8, 1960 - Found concrete monument down 1.0' with an iron pipe on the north side. Updated ties.

June 4, 1964 - Found concrete monument and updated ties.

July 14, 1966 - Found concrete monument missing with a 1/2" iron pipe in its location. Two remaining ties fit location of iron pipe. Updated ties.

August 24, 1967 - Found iron pipe missing. Reset position of corner with a spike using two remaining ties. Updated ties.

August 3, 1970 - Found spike missing. Reset position of corner with a broken off cast iron monument set flush with the surface using ties. Updated ties. Monument is 4± north of centerline.

July 16, 1974 - Found cast iron monument and updated ties.

June 23, 1977 - Found cast iron monument and updated ties.

July 3, 1980 - Found cast iron monument and updated ties.

June 17, 1986 - Found cast iron monument and updated ties.

January 26, 1988 - Found cast iron monument and updated ties.

August 21, 1990 - Found cast iron monument and updated ties.

August 16, 1994 - Found cast iron monument and updated ties.

March 13, 2000 - Set construction ties and removed cast iron monument prior to road construction.

June 7, 2000 - Set cast iron monument after road construction using construction ties. Updated ties.

August 23, 2001 - Found cast iron monument and established NAD 1983 (1996 Adjustment) Anoka County Project Coordinates by Static GPS methods. Updated ties.

March 10, 2010 - Found cast iron monument and updated ties.