

CERTIFICATE OF LOCATION OF GOVERNMENT CORNER

County of Anoka

State of Minnesota

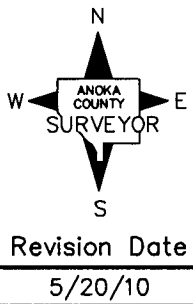
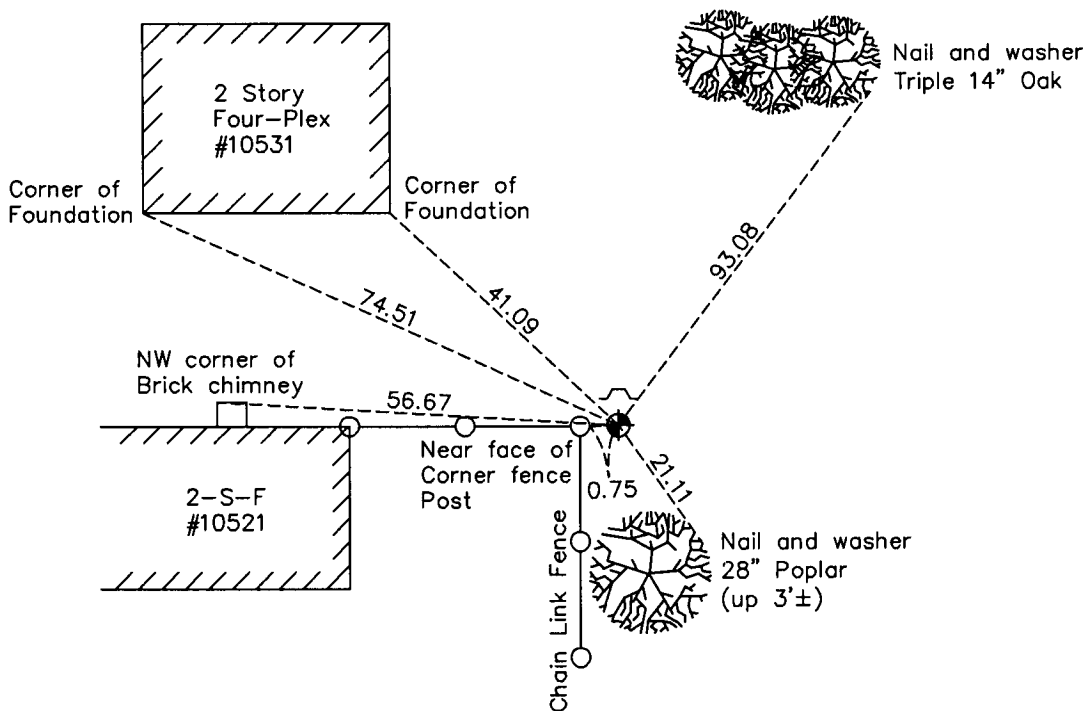
East 1/4 Corner of Sec. 23 Township 31 Range 24

On the 2nd day of August, 1960, the described corner was evidenced by a 1 1/2" iron pipe

and to perpetuate the location of said corner, at the exact location thereof, a permanent marker was placed consisting of a cast iron monument with a sign and post 1.1' North

AND on the ___ day of March, 2010, said permanent marker was found down 0.5' and the ties were updated

Updated reference ties are as shown below.



N.A.D. 1983 Coordinates
(1996 Adjustment)

County Project Coordinates	
Northing	<u>145688.3905</u>
Easting	<u>494746.8238</u>
Date	<u>8/09/01</u>

I hereby certify that this United States public land survey monument record is correct and complete to the best of my knowledge and belief.

Larry D. Hoium Date 5/20/10

Larry D. Hoium, Anoka County Surveyor
Minnesota License Number 18165

HISTORY OF GOVERNMENT CORNER

Page No. 76

County of Anoka

State of Minnesota

East 1/4 Corner of Sec. 23 Township 31 Range 24

CORNER HISTORY:

Summer 1957 - Minder Engineering Company found a 1-1/2" iron pipe. Established ties to monument.

August 2, 1960 - Replaced 1-1/2" iron pipe with a cast iron monument set flush with the surface. Updated ties.

June 16, 1964 - Found cast iron monument and updated ties.

July 12, 1966 - Found cast iron monument and updated ties.

July 30, 1970 - Found cast iron monument and updated ties.

July 11, 1974 - Found cast iron monument and set a warning sign and post 1'± north of monument. Updated ties.

June 23, 1977 - Found cast iron monument and updated ties.

July 8, 1980 - Found cast iron monument and updated ties.

June 24, 1986 - Found an iron pipe in location of cast iron monument after housing construction in area. Replaced iron pipe with a cast iron monument and updated ties. The warning sign was still in place.

August 29, 1990 - Found cast iron monument and updated ties.

August 11, 1994 - Found cast iron monument and updated ties.

August 9, 2001 - Found cast iron monument and established NAD 1983 (1996 Adjustment) Anoka County Project Coordinates by Static GPS methods. Updated ties.

March 2010 - Found cast iron monument down 0.5' and updated ties.