

CERTIFICATE OF LOCATION OF GOVERNMENT CORNER

County of Anoka

State of Minnesota

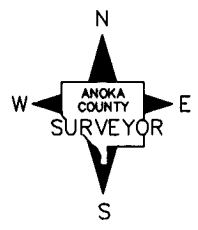
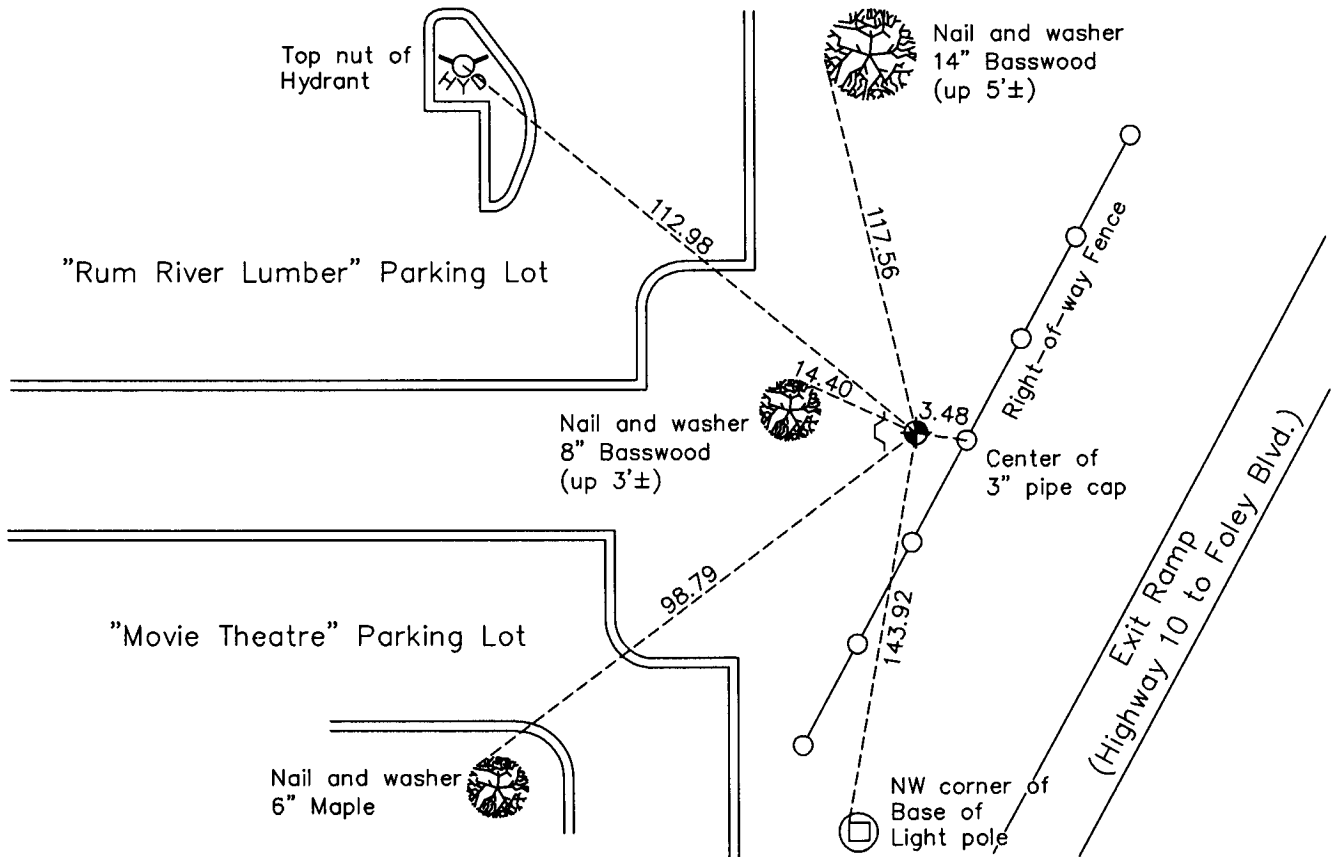
North 1/4 Corner of Sec. 25 Township 31 Range 24

On the 1st day of June, 1962, the described corner was evidenced by a 3/4" iron pipe

and to perpetuate the location of said corner, at the exact location thereof, a permanent marker was placed consisting of a cast iron monument with a sign and post on the west side

AND on the 11th day of March, 2010, said permanent marker was found and the ties were updated

Updated reference ties are as shown below.



N.A.D. 1983 Coordinates
(1996 Adjustment)

County Project Coordinates	
Northing	143081.3796
Easting	497362.2590
Date	9/06/01

Revision Date
5/21/10

I hereby certify that this United States public land survey monument record is correct and complete to the best of my knowledge and belief.

Larry D. Hoium Date 5/21/10
 Larry D. Hoium, Anoka County Surveyor
 Minnesota License Number 18165

HISTORY OF GOVERNMENT CORNER

Page No. 79

County of Anoka

State of Minnesota

North 1/4 Corner of Sec. 25 Township 31 Range 24

CORNER HISTORY:

September 15, 1943 - H.A. Cartwright found concrete monument set down 3". Established ties to monument.

July 1957 - Minder Engineering Company found concrete monument and updated ties.

June 16, 1959 - Found concrete monument and updated ties.

December 11, 1959 - Concrete monument was removed for water main installation. Caswell Engineering Company provided construction ties to the monument.

December 14, 1960 - Set spike after construction using construction ties.

May 28, 1962 - State Highway Department found 3/4" iron pipe.

June 1, 1962 - Replaced 3/4" iron pipe (fits old ties very well) with a cast iron monument. Also set 1" red iron pipe on north side up 15". Updated ties.

April 26, 1965 - Found cast iron monument and updated ties.

November 18, 1965 - Set cast iron monument flush with the surface after construction. Steel fence posts 0.5'± west, NE and SE. Updated ties.

July 12, 1966 - Found cast iron monument and updated ties.

July 31, 1970 - Found cast iron monument and updated ties.

July 16, 1974 - Found cast iron monument and updated ties.

June 23, 1977 - Found cast iron monument and updated ties.

July 8, 1980 - Found cast iron monument and updated ties. Right-of-way sign and post on the west side.

June 13, 1986 - Found cast iron monument and updated ties.

April 26, 1991 - Found cast iron monument and updated ties.

August 24, 1994 - Found cast iron monument and updated ties.

September 18, 1996 - Updated ties and removed cast iron monument prior to construction. Sign and post on west side.

April 11, 1997 - Replaced 1/2" iron pipe, set after construction, with a cast iron monument and updated ties.

September 6, 2001 - Found cast iron monument and established NAD 1983 (1996 Adjustment) Anoka County Project Coordinates by Static GPS methods. Updated ties.

March 11, 2010 - Found cast iron monument and updated ties.