

CERTIFICATE OF LOCATION OF GOVERNMENT CORNER

County of Anoka

State of Minnesota

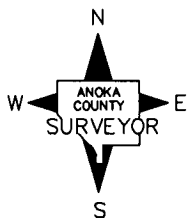
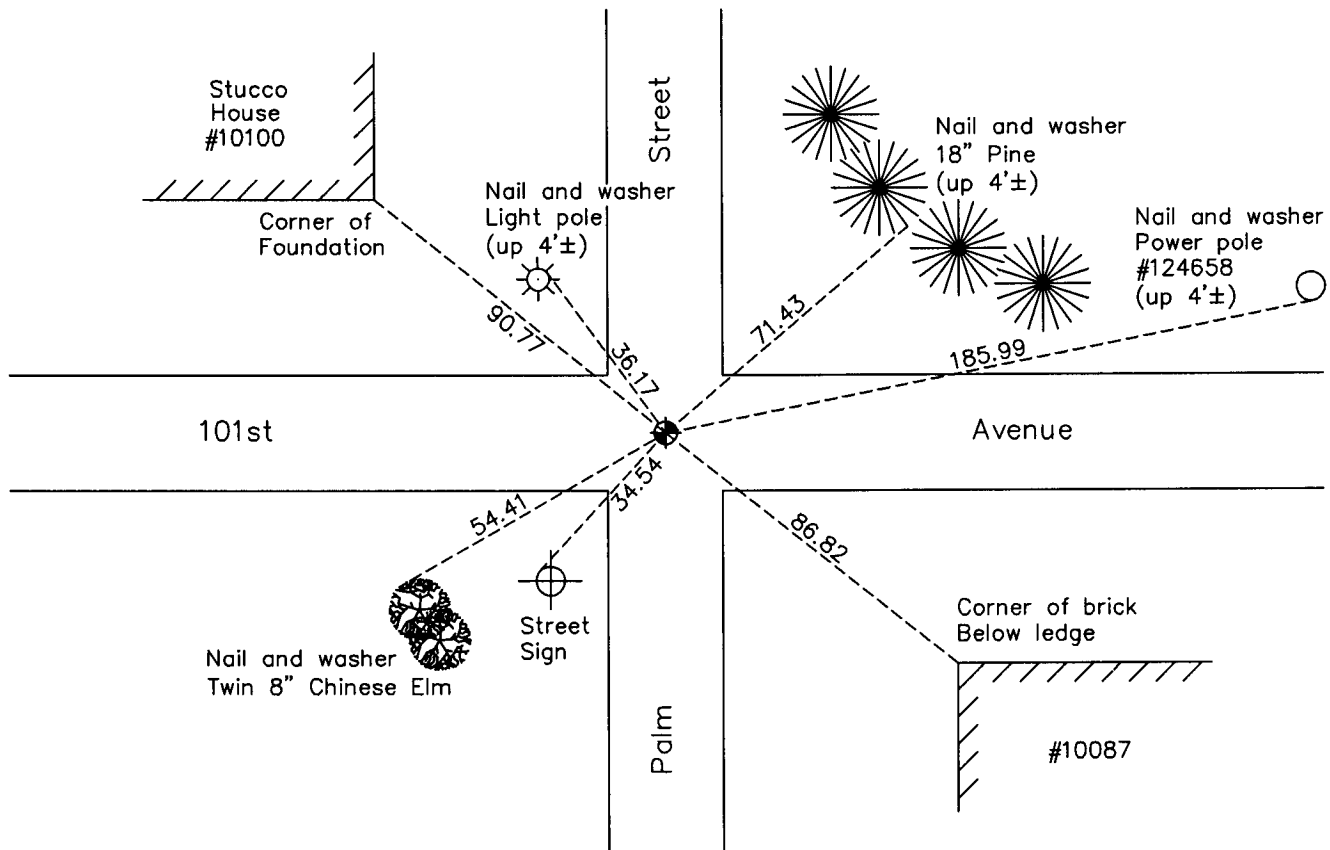
Northwest Corner of Sec. 25 Township 31 Range 24

On the 28th day of July, 1960, the described corner was evidenced by a concrete monument

and to perpetuate the location of said corner, at the exact location thereof, a permanent marker was placed consisting of a cast iron monument on top of the broken concrete monument

AND on the 5th day of March, 2010, said permanent marker was found and the ties were updated

Updated reference ties are as shown below.



Revision Date
5/21/10

N.A.D. 1983 Coordinates
(1996 Adjustment)

County Project Coordinates	
Northing	<u>143041.0812</u>
Easting	<u>494694.6896</u>
Date	<u>8/17/01</u>

I hereby certify that this United States public land survey monument record is correct and complete to the best of my knowledge and belief.

Larry D. Hoium Date 5/21/10

Larry D. Hoium, Anoka County Surveyor

Minnesota License Number 18165

HISTORY OF GOVERNMENT CORNER

Page No. 80

County of Anoka

State of Minnesota

Northwest Corner of Sec. 25 Township 31 Range 24

CORNER HISTORY:

August 15, 1943 - H.A. Cartwright found concrete monument set flush with the surface. Established ties to monument.

July 9, 1959 - Northern Natural Gas Company found concrete monument.

July 28, 1960 - Found concrete monument down 0.5' with a pinched iron pipe on south side of monument down 0.25' and updated ties.

June 3, 1964 - Found concrete monument and updated ties.

July 12, 1966 - Found concrete monument and updated ties.

September 13, 1966 - Found cast iron monument (date set unknown) flush with the surface over the broken off concrete monument and updated ties.

August 24, 1967 - Found cast iron monument and updated ties.

July 16, 1974 - Found cast iron monument and updated ties.

June 23, 1977 - Found cast iron monument and updated ties.

July 8, 1980 - Found cast iron monument and updated ties.

June 17, 1986 - Found cast iron monument and updated ties.

January 26, 1988 - Found cast iron monument and updated ties.

August 16, 1990 - Found cast iron monument and updated ties.

June 29, 1994 - Found cast iron monument and updated ties.

August 17, 2001 - Found cast iron monument and established NAD 1983 (1996 Adjustment) Anoka County Project Coordinates by Static GPS methods. Updated ties.

March 5, 2010 - Found cast iron monument and updated ties.