

CERTIFICATE OF LOCATION OF GOVERNMENT CORNER

County of Anoka

State of Minnesota

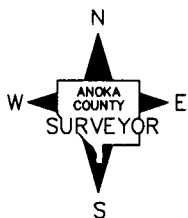
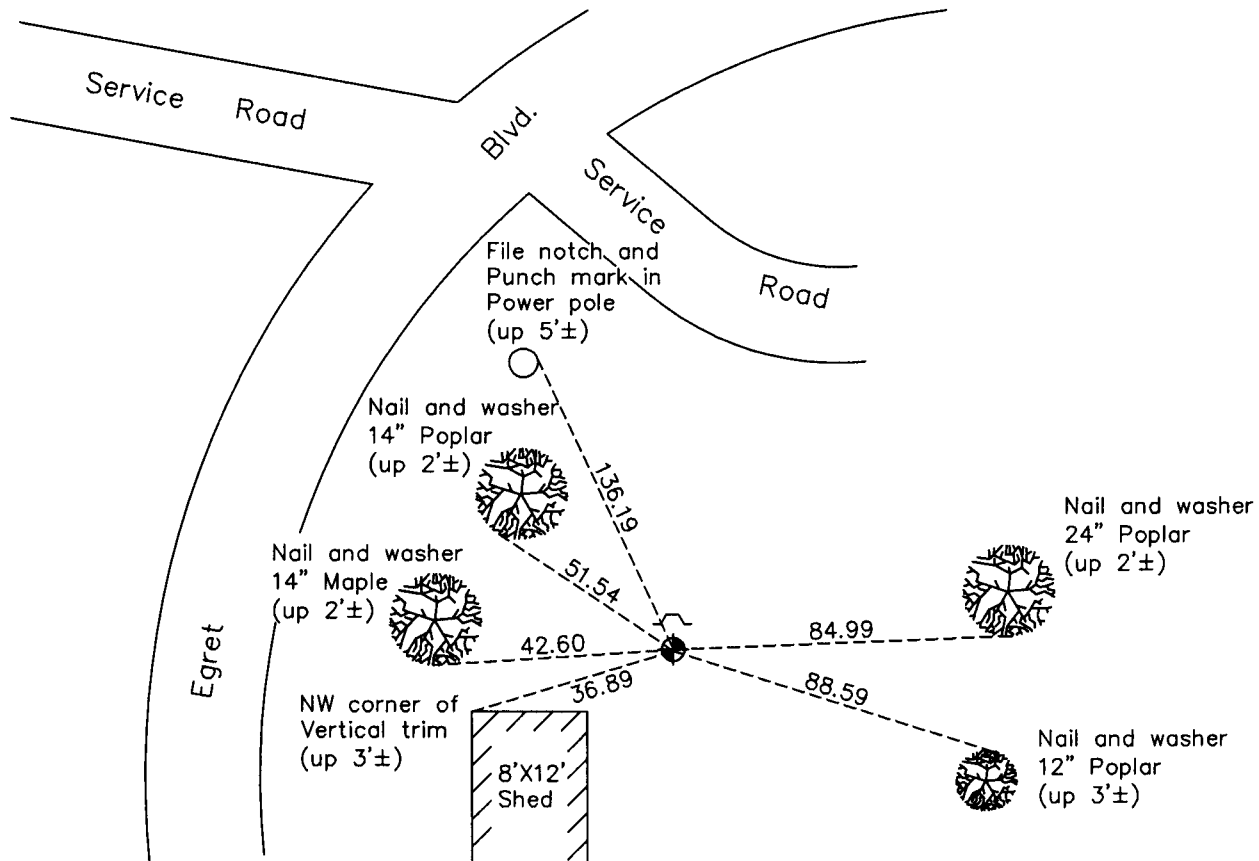
Southeast Corner of Sec. 22 Township 31 Range 24

On the 24th day of June, 1960, the described corner was evidenced by a concrete monument

and to perpetuate the location of said corner, at the exact location thereof, a permanent marker was placed consisting of a cast iron monument with a sign and post on the north side

AND on the 14th day of February, 2011, said permanent marker was found broken. Set new cast iron monument.

Updated reference ties are as shown below.



Revision Date
3/07/11

N.A.D. 1983 Coordinates
 (1996 Adjustment)

County Project Coordinates	
Northing	143113.8895
Easting	489418.7452
Date	9/06/01

I hereby certify that this United States public land survey monument record is correct and complete to the best of my knowledge and belief.

Larry D. Hoium Date 3/07/11

Larry D. Hoium, Anoka County Surveyor
 Minnesota License Number 18165

HISTORY OF GOVERNMENT CORNER

Page No. 82

County of Anoka

State of Minnesota

Southeast Corner of Sec. 22 Township 31 Range 24

CORNER HISTORY:

July 6, 1943 - H.A. Cartwright found concrete monument set flush with the surface. Established ties to monument.

July 1957 - Minder Engineering Company found concrete monument up 6" and updated ties.

June 24, 1960 - Found concrete monument up 1.5' and updated ties.

July 22, 1964 - Found concrete monument up 0.2' with top broken off and updated ties. Set steel fence post 0.5' south and up 3'.

December 7, 1965 - Found concrete monument and updated ties.

July 14, 1966 - Found concrete monument and updated ties.

July 31, 1970 - Found concrete monument and updated ties.

February 11, 1974 - Found concrete monument and updated ties prior to construction.

February 27, 1974 - Set construction ties prior to road construction.

November 22, 1976 - Set spike after construction using construction ties and tie to the east. Updated ties.

May 6, 1977 - Set cast iron monument using ties and set sign and post on the north side. Updated ties.

August 24, 1979 - Found cast iron monument and updated ties.

July 3, 1980 - Found cast iron monument and updated ties.

June 20, 1986 - Found cast iron monument and updated ties.

September 6, 2001 - Found cast iron monument and established NAD 1983 (1996 Adjustment) Anoka County Project Coordinates by Static GPS methods. Updated ties.

February 14, 2011 - Replaced broken cast iron monument with a new cast iron monument. Updated ties.