

CERTIFICATE OF LOCATION OF GOVERNMENT CORNER

County of Anoka

State of Minnesota

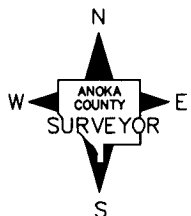
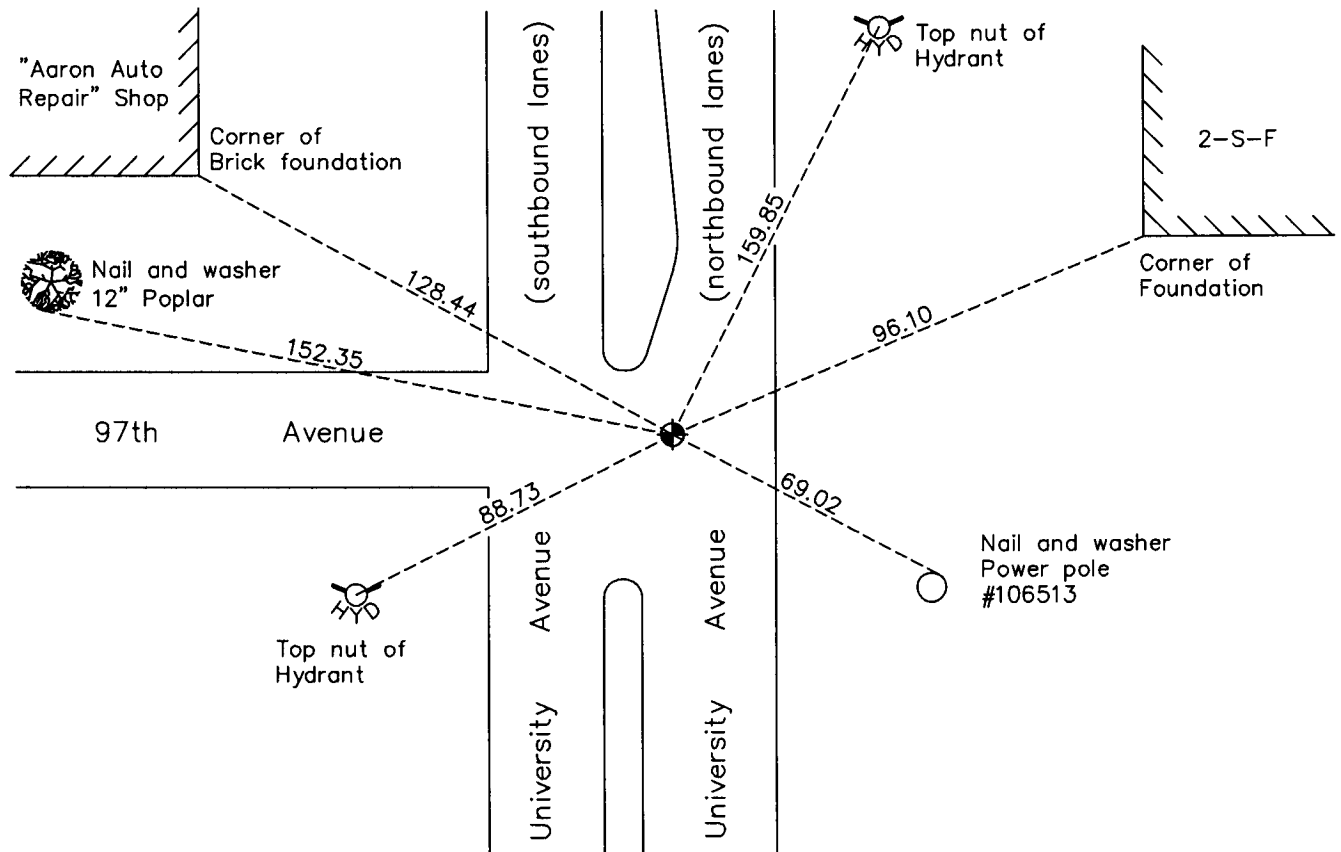
East 1/4 Corner of Sec. 25 Township 31 Range 24

On the 5th day of August, 1960, the described corner was evidenced by a concrete monument

and to perpetuate the location of said corner, at the exact location thereof, a permanent marker was placed consisting of a cast iron monument

AND on the 30th day of March, 2010, said permanent marker was found and the ties were updated

Updated reference ties are as shown below.



Revision Date
5/24/10

N.A.D. 1983 Coordinates
(1996 Adjustment)

County Project Coordinates	
Northing	<u>140478.2190</u>
Easting	<u>500001.9968</u>
Date	<u>12/15/98</u>

I hereby certify that this United States public land survey monument record is correct and complete to the best of my knowledge and belief.

Larry D. Hoium Date 5/24/10

Larry D. Hoium, Anoka County Surveyor

Minnesota License Number 18165

HISTORY OF GOVERNMENT CORNER

County of Anoka

State of Minnesota

East 1/4 Corner of Sec. 25 Township 31 Range 24

CORNER HISTORY:

Date unknown - Found concrete monument set down 14". Established ties to monument.

September 1954 - Harold Wilke found concrete monument and updated ties.

August 5, 1960 - Found concrete monument down 0.8' with an iron pipe on north side and updated ties.

June 3, 1964 - Found concrete monument and updated ties.

July 11, 1966 - Found concrete monument and updated ties.

June 19, 1968 - Found concrete monument and added additional ties for construction.

August 28, 1968 - Replaced broken off concrete monument with a cast iron monument set flush with the surface and updated ties.

July 19, 1974 - Found cast iron monument and updated ties.

June 24, 1977 - Found cast iron monument and updated ties.

July 9, 1980 - Found cast iron monument and updated ties.

February 14, 1992 - Found cast iron monument and updated ties.

September 19, 1994 - Reset cast iron monument and updated ties.

December 15, 1998 - Found cast iron monument and established NAD 1983 (1996 Adjustment) Anoka County Project Coordinates by Static GPS methods. Updated ties.

March 30, 2010 - Found cast iron monument and updated ties.