

CERTIFICATE OF LOCATION OF GOVERNMENT CORNER

County of Anoka

State of Minnesota

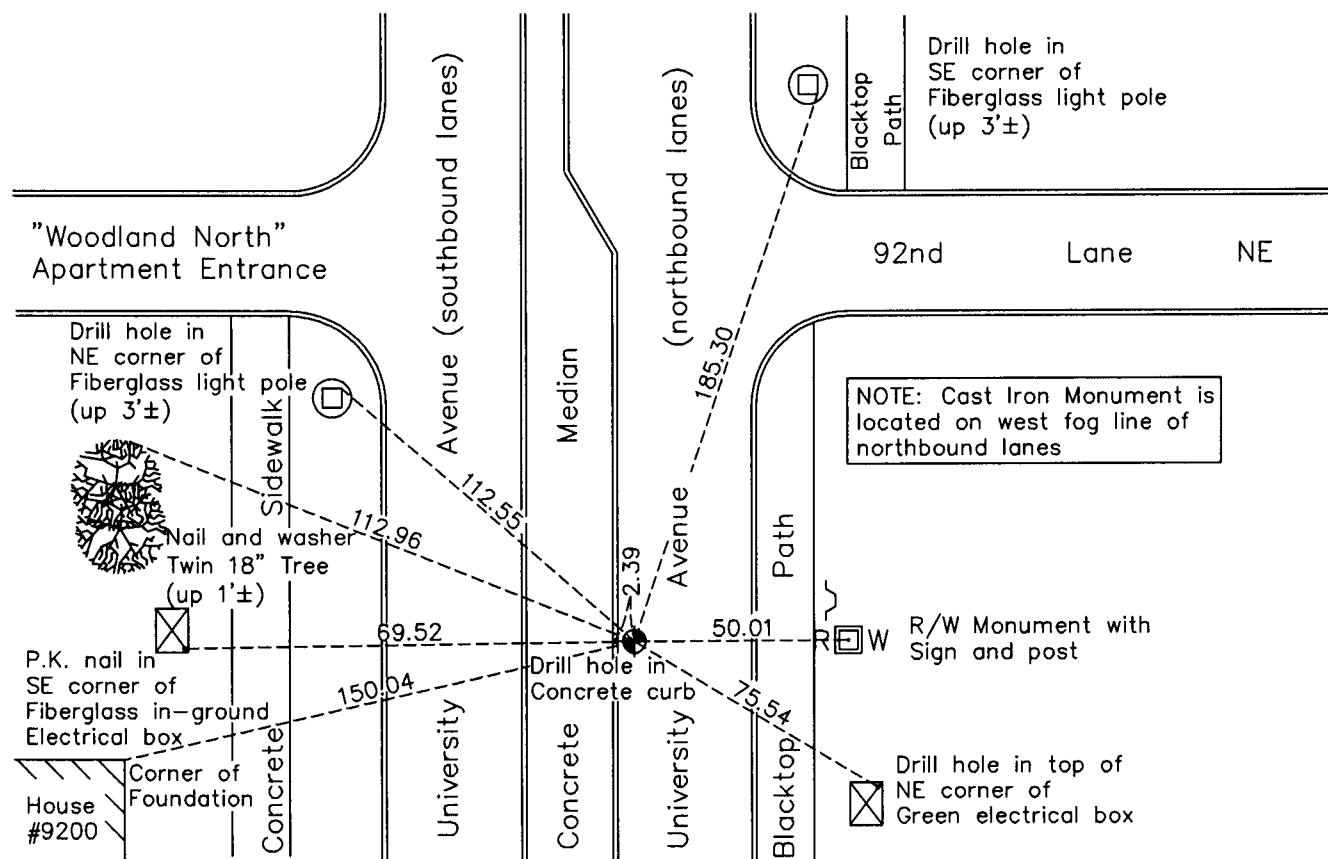
Southeast Corner of Sec. 25 Township 31 Range 24

On the 4th day of August, 1960, the described corner was evidenced by a concrete monument

and to perpetuate the location of said corner, at the exact location thereof, a permanent marker was placed consisting of a cast iron monument

AND on the 12th day of April, 2011, said permanent marker was replaced with a cast iron monument after road construction was complete and the ties were updated.

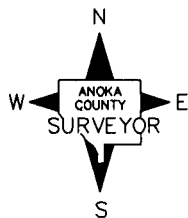
Updated reference ties are as shown below.



NOTE: Cast Iron Monument is located on west fog line of northbound lanes

R/W Monument with Sign and post

Drill hole in top of NE corner of Green electrical box



Revision Date
7/19/11

N.A.D. 1983 Coordinates
(1996 Adjustment)

County Project Coordinates	
Northing	137828.9304
Easting	499972.0145
Date	12/15/98

I hereby certify that this United States public land survey monument record is correct and complete to the best of my knowledge and belief.

Larry D. Hoium Date 7/19/11

Larry D. Hoium, Anoka County Surveyor
Minnesota License Number 18165

HISTORY OF GOVERNMENT CORNER

County of Anoka

State of Minnesota

Southeast Corner of Sec. 25 Township 31 Range 24

CORNER HISTORY:

June 22, 1943 - H.A. Cartwright found concrete monument set down 6". Established ties to monument.

September 1954 - Found concrete monument and updated ties.

August 4, 1960 - Found concrete monument with an iron pipe on the south side and updated ties.

June 26, 1964 - Found concrete monument and updated ties.

July 11, 1966 - Found concrete monument and updated ties.

June 19, 1968 - Found concrete monument and set additional ties for construction.

August 28, 1968 - Replaced pieces of broken concrete monument with a cast iron monument set flush with the surface. Updated ties.

July 30, 1970 - Found cast iron monument and updated ties.

July 19, 1974 - Found cast iron monument and updated ties.

June 24, 1977 - Found cast iron monument and updated ties.

July 9, 1980 - Found cast iron monument and updated ties.

February 14, 1992 - Found cast iron monument and updated ties.

December 15, 1998 - Found cast iron monument and established NAD 1983 (1996 Adjustment) Anoka County Project Coordinates by Static GPS methods. Updated ties.

April 12, 2011 - Replaced cast iron monument after road construction was complete and updated ties.