

CERTIFICATE OF LOCATION OF GOVERNMENT CORNER

County of Anoka

State of Minnesota

Witness Corner of Sec. 26 Township 31 Range 24

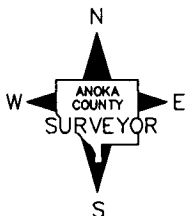
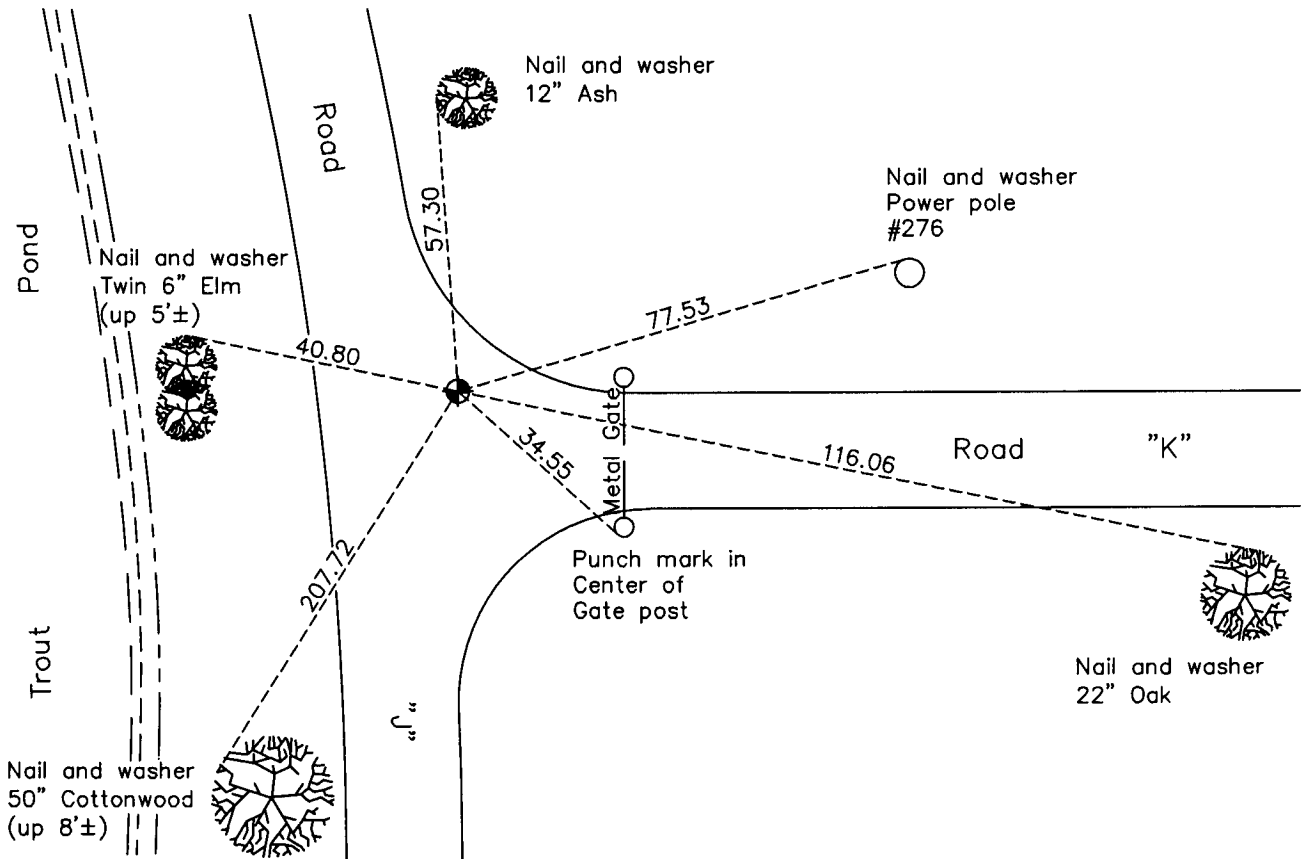
(On south line of SW1/4)

On the 22nd day of September, 1987, the described corner was evidenced by area resurvey

and to perpetuate the location of said corner, at the exact location thereof, a permanent marker was placed consisting of a cast iron monument

AND on the 18th day of February, 2010, said permanent marker was found flush and the ties were updated

Updated reference ties are as shown below.



Revision Date
5/25/10

N.A.D. 1983 Coordinates
(1996 Adjustment)

County Project Coordinates	
Northing	<u>137828.3704</u>
Easting	<u>491753.5972</u>
Date	<u>8/16/01</u>

I hereby certify that this United States public land survey monument record is correct and complete to the best of my knowledge and belief.

Larry D. Hoium Date 5/25/10

Larry D. Hoium, Anoka County Surveyor

Minnesota License Number 18165

HISTORY OF GOVERNMENT CORNER

Page No. 92B

County of Anoka

State of Minnesota

Witness Corner of Sec. 26 Township 31 Range 24
(On south line of SW1/4)

CORNER HISTORY:

September 22, 1987 - Set spike using area resurvey and established ties to monument.

March 3, 1988 - Found spike and updated ties. It is not known whether the spike was replaced with a cast iron monument at this time.

August 28, 1990 - Found cast iron monument and updated ties.

August 15, 1994 - Found cast iron monument and updated ties.

August 16, 2001 - Found cast iron monument and established NAD 1983 (1996 Adjustment) Anoka County Project Coordinates by Static GPS methods. Updated ties.

February 18, 2010 - Found cast iron monument flush with the surface and updated ties.