

CERTIFICATE OF LOCATION OF GOVERNMENT CORNER

County of Anoka

State of Minnesota

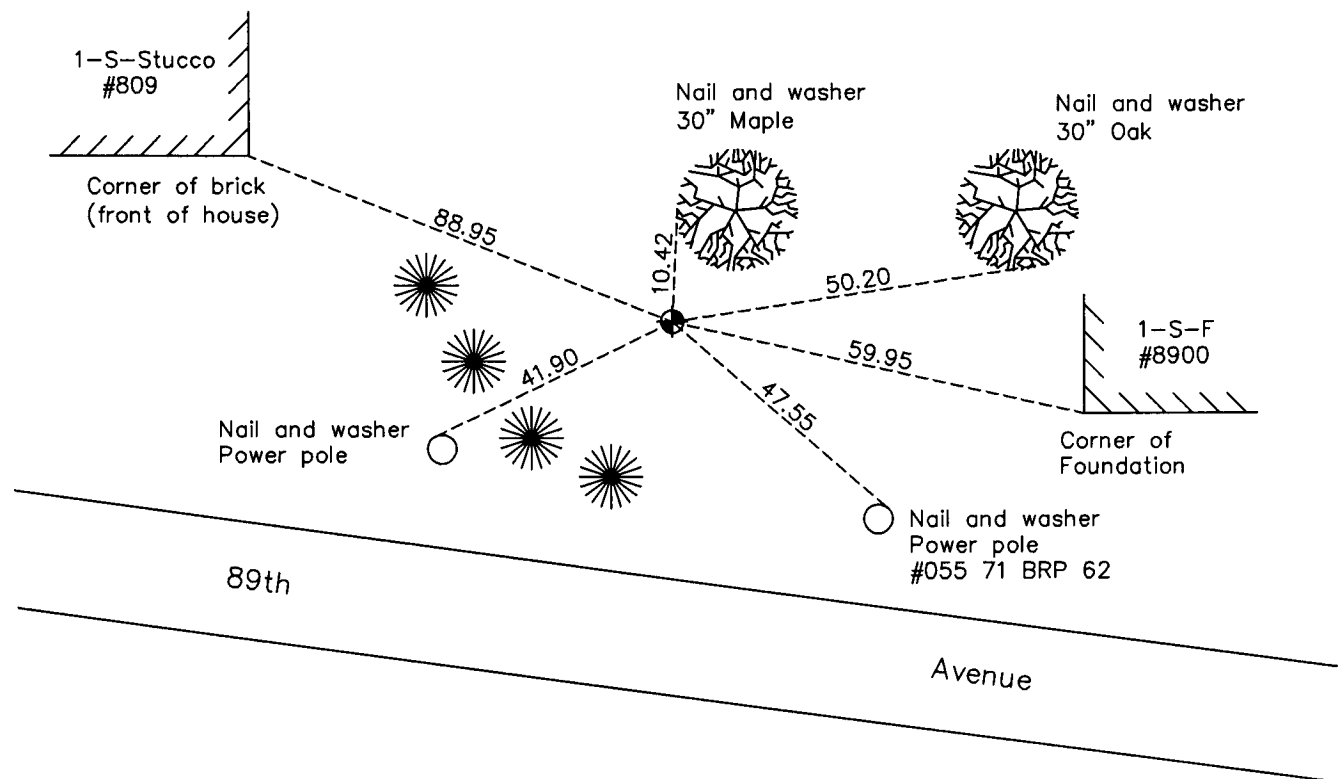
East 1/4 Corner of Sec. 35 Township 31 Range 24

On the 25th day of March, 1963, the described corner was evidenced by a 3/4" iron pipe from platting

and to perpetuate the location of said corner, at the exact location thereof, a permanent marker was placed consisting of a cast iron monument

AND on the 5th day of March, 2010, said permanent marker was found down 0.4' and the ties were updated

Updated reference ties are as shown below.



N

 ANOKA COUNTY SURVEYOR
 S

Revision Date
5/26/10

N.A.D. 1983 Coordinates
(1996 Adjustment)

| County Project Coordinates | |
|----------------------------|-------------|
| Northing | 135120.6074 |
| Easting | 494650.2744 |
| Date | 9/25/01 |

I hereby certify that this United States public land survey monument record is correct and complete to the best of my knowledge and belief.

Larry D. Hoium Date 5/26/10

Larry D. Hoium, Anoka County Surveyor
 Minnesota License Number 18165

HISTORY OF GOVERNMENT CORNER

Page No. 93

County of Anoka

State of Minnesota

East 1/4 Corner of Sec. 35 Township 31 Range 24

CORNER HISTORY:

March 25, 1963 - Set 3/4" iron pipe using area platting and established ties to monument.

August 4, 1970 - Found 3/4" iron pipe and updated ties.

June 24, 1977 - Found 3/4" iron pipe and updated ties.

June 20, 1986 - Found 3/4" iron pipe and updated ties.

February 1, 1988 - Found 3/4" iron pipe and updated ties.

August 17, 1990 - Found cast iron monument (date set is unknown) and updated ties.

August 15, 1994 - Found cast iron monument and updated ties.

September 25, 2001 - Found cast iron monument and established NAD 1983 (1996 Adjustment) Anoka County Project Coordinates by Static GPS methods. Updated ties.

March 5, 2010 - Found cast iron monument down 0.4' and updated ties.