

# CERTIFICATE OF LOCATION OF GOVERNMENT CORNER

County of Anoka

State of Minnesota

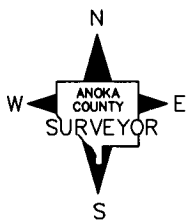
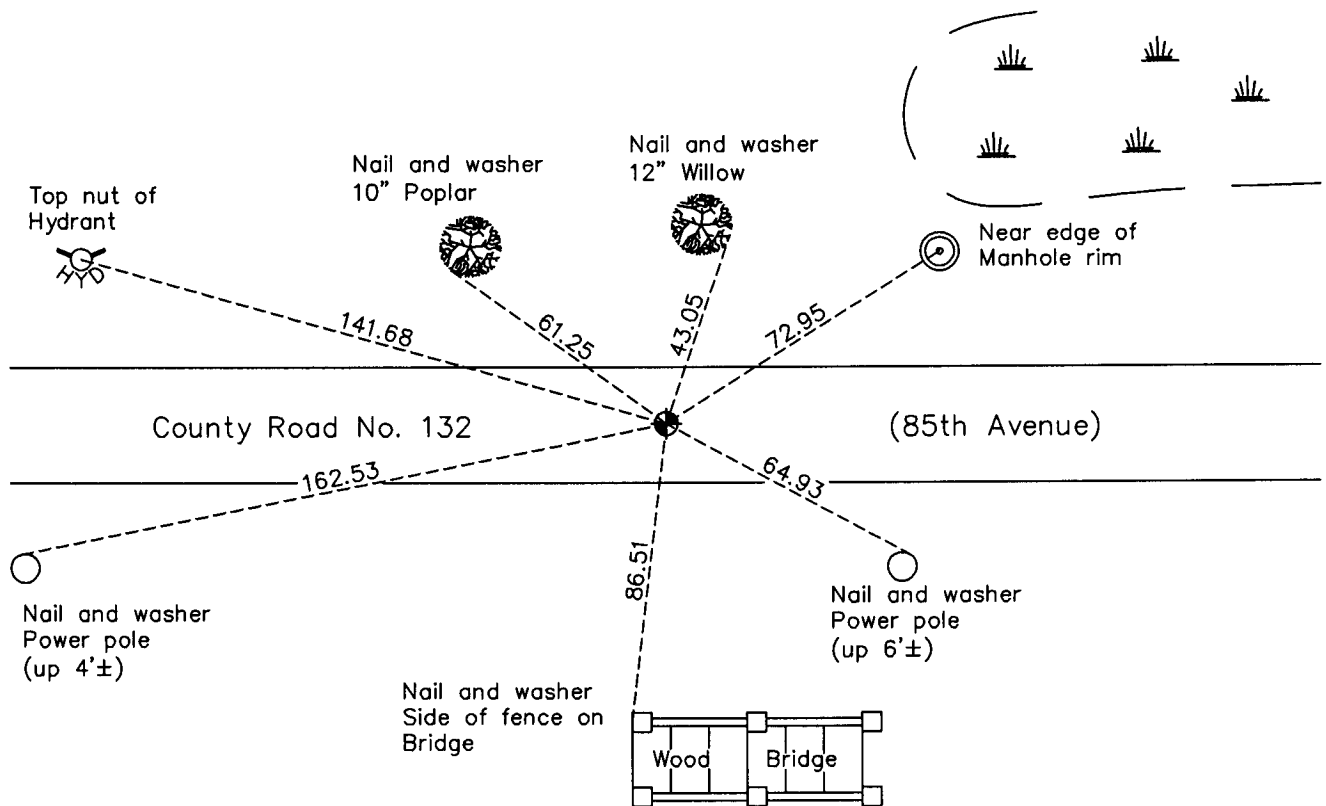
## South 1/4 Corner of Sec. 36 Township 31 Range 24

On the 22nd day of March, 1963, the described corner was evidenced by area resurvey  
 Reset by N. C. Hoium on June 12, 1969.

and to perpetuate the location of said corner, at the exact location thereof, a permanent marker  
 was placed consisting of a cast iron monument

AND on the      day of March, 2010, said permanent marker was found and the ties  
were updated

Updated reference ties are as shown below.



Revision Date  
5/26/10

N.A.D. 1983 Coordinates  
 (1996 Adjustment)

County Project Coordinates	
Northing	<u>132517.3654</u>
Easting	<u>497271.5444</u>
Date	<u>9/25/01</u>

I hereby certify that this United States public land survey monument record is correct and complete to the best of my knowledge and belief.

*Larry D. Hoium* Date 5/26/10

Larry D. Hoium, Anoka County Surveyor

Minnesota License Number 18165

# HISTORY OF GOVERNMENT CORNER

Page No. 97

County of Anoka

State of Minnesota

## South 1/4 Corner of Sec. 36 Township 31 Range 24

### **CORNER HISTORY:**

March 22, 1963 - Set 1"x8' iron pipe up 3.5' using area resurvey and established ties to monument. Top 3.5' is painted with 6" red and white bands.

December 1964 - Caswell Engineering, Inc. reported that the iron pipe had been taken out.

June 10, 1968 - Found iron pipe and updated ties. All ties were found to be gone.

June 12, 1969 - Found 1" iron pipe down 0.1'± and updated ties. Iron pipe was reset by N.C. Hoium.

August 19, 1969 - Replaced 1" iron pipe with a cast iron monument set flush with the surface and updated ties. Set P.K. nails 2.00' north and east.

May 10, 1973 - Set construction ties and removed cast iron monument prior to road construction.

July 18, 1974 - Updated ties to corner location.

August 17, 1976 - Set cast iron monument after road construction using construction ties.

October 12, 1981 - Set construction ties prior to road construction.

June 8, 1982 - Set cast iron monument flush with surface after road construction using construction ties. Also set P.K. nails 2.00' north and east of monument.

June 12, 1986 - Found cast iron monument and updated ties.

August 27, 1990 - Found cast iron monument and updated ties.

August 15, 1994 - Found cast iron monument and updated ties.

September 25, 2001 - Found cast iron monument and established NAD 1983 (1996 Adjustment) Anoka County Project Coordinates by Static GPS methods. Updated ties.

March 2010 - Found cast iron monument and updated ties.