

CERTIFICATE OF LOCATION OF GOVERNMENT CORNER

County of Anoka

State of Minnesota

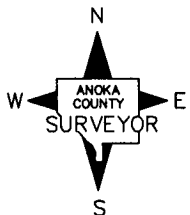
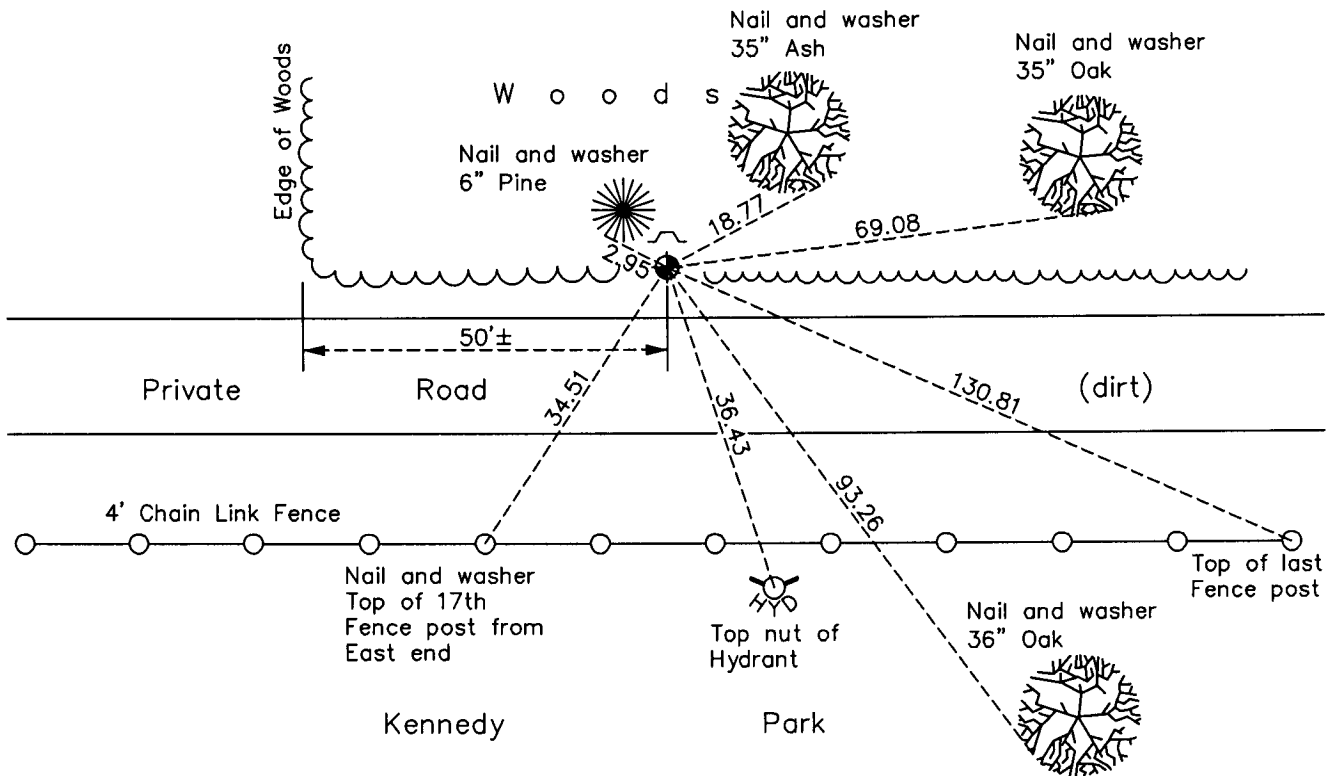
Southwest Corner of Sec. 36 Township 31 Range 24

On the 29th day of June, 1960, the described corner was evidenced by a concrete monument

and to perpetuate the location of said corner, at the exact location thereof, a permanent marker was placed consisting of a cast iron monument with a sign and post on the north side

AND on the 8th day of March, 2010, said permanent marker was found and the ties were updated

Updated reference ties are as shown below.



N.A.D. 1983 Coordinates
(1996 Adjustment)

County Project Coordinates	
Northing	<u>132480.0152</u>
Easting	<u>494610.5623</u>
Date	<u>9/25/01</u>

Revision Date
5/26/10

I hereby certify that this United States public land survey monument record is correct and complete to the best of my knowledge and belief.

Larry D. Hoium Date 5/26/10

Larry D. Hoium, Anoka County Surveyor
 Minnesota License Number 18165

HISTORY OF GOVERNMENT CORNER

Page No. 98

County of Anoka

State of Minnesota

Southwest Corner of Sec. 36 Township 31 Range 24

CORNER HISTORY:

July 13, 1943 - H.A. Cartwright found concrete monument. Established ties to monument.

June 29, 1960 - Found concrete monument set down 0.2' and 9'± north of centerline of private road. Set iron pipe on north side of monument and updated ties.

June 5, 1964 - Found concrete monument and updated ties.

July 12, 1966 - Found concrete monument and updated ties.

August 4, 1970 - Found concrete monument and updated ties.

July 19, 1974 - Replaced concrete monument with a cast iron monument set flush with the surface. Updated ties.

June 24, 1977 - Found cast iron monument and updated ties.

August 27, 1990 - Found cast iron monument and updated ties. Set sign and post on north side of monument.

August 3, 1994 - Found cast iron monument and updated ties.

September 25, 2001 - Found cast iron monument and established NAD 1983 (1996 Adjustment) Anoka County Project Coordinates by Static GPS methods. Updated ties.

March 8, 2010 - Found cast iron monument and updated ties.