

CERTIFICATE OF LOCATION OF GOVERNMENT CORNER

County of Anoka

State of Minnesota

Witness Corner of Sec. 11 Township 31 Range 22

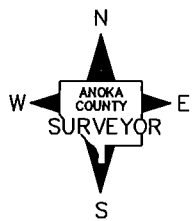
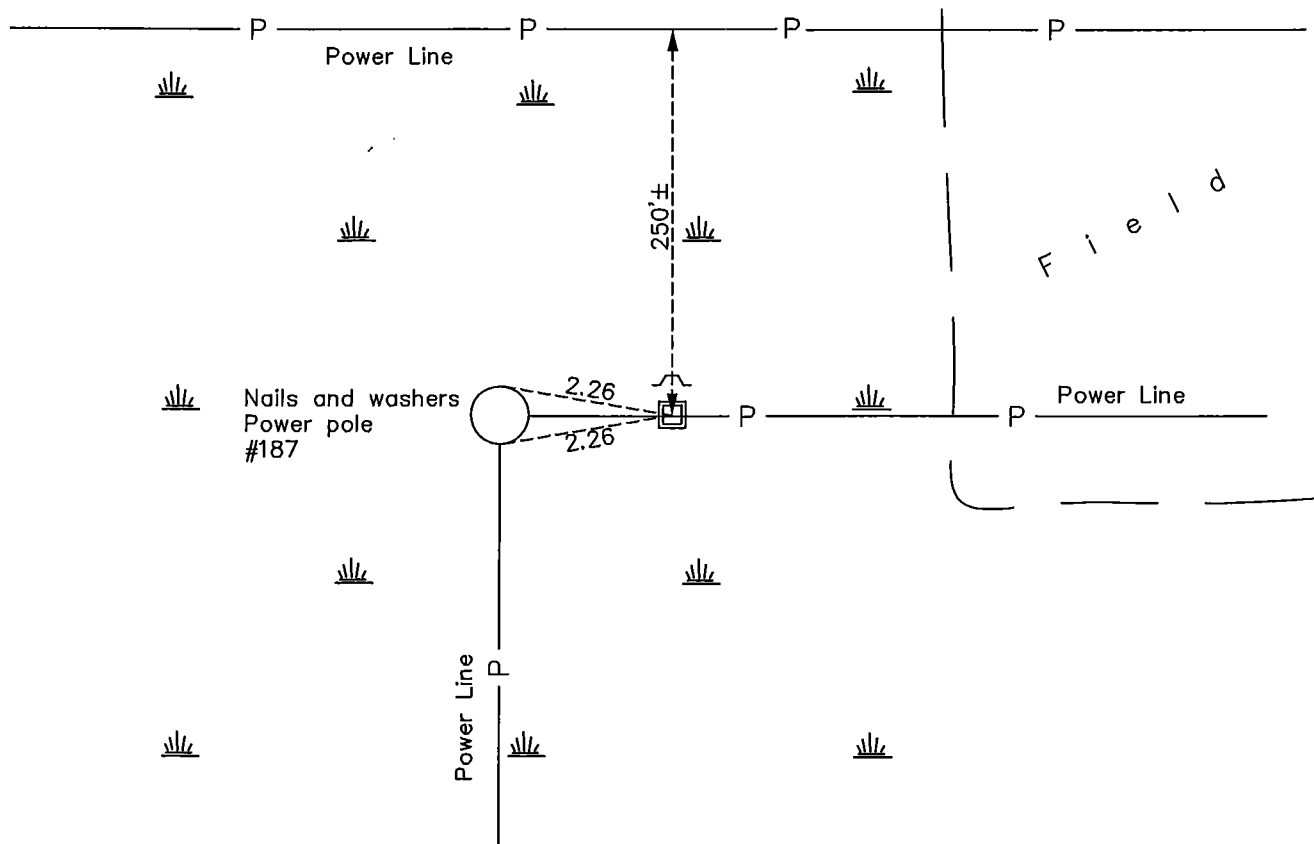
(On the north line of the NE 1/4)

On the 20th day of October, 1975, the described corner was evidenced by area resurvey

and to perpetuate the location of said corner, at the exact location thereof, a permanent marker was placed consisting of a cast iron monument with a sign and post on the north side

AND on the 24th day of May, 2011, said permanent marker was replaced with a 2" square steel Telespar monument with 'County Surveyor' cap and updated ties.

Updated reference ties are as shown below.



Revision Date
5/09/12

N.A.D. 1983 Coordinates
(1996 Adjustment)

County Project Coordinates	
Northing	<u>158878.7446</u>
Easting	<u>557005.4297</u>
Date	<u>4/10/98</u>

I hereby certify that this United States public land survey monument record is correct and complete to the best of my knowledge and belief.

Larry D. Hoium Date 5/09/12

Larry D. Hoium, Anoka County Surveyor

Minnesota License Number 18165