

CERTIFICATE OF LOCATION OF GOVERNMENT CORNER

County of Anoka

State of Minnesota

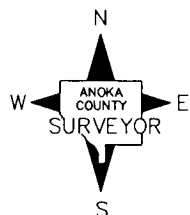
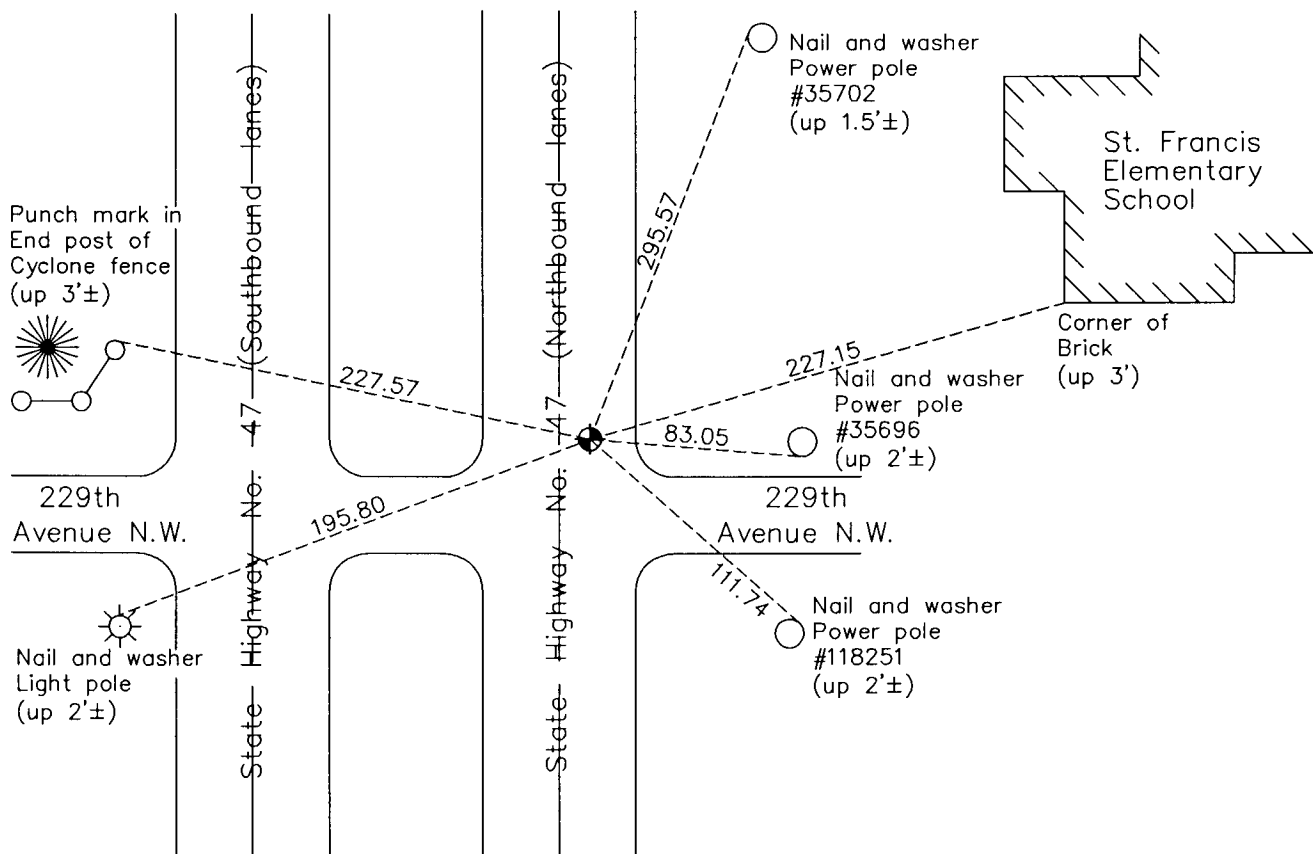
Northwest Corner of Sec. 5 Township 33 Range 24

On the 4th day of September, 1962, the described corner was evidenced by a concrete monument

and to perpetuate the location of said corner, at the exact location thereof, a permanent marker was placed consisting of a cast iron monument

AND on the 12th day of January, 2012, said permanent marker was found with top missing. Top was replaced flush with the road surface and the ties were updated

Updated reference ties are as shown below.



N.A.D. 1983 Coordinates
(1996 Adjustment)

County Project Coordinates	
Northing	227450.4220
Easting	474041.2947
Date	3/23/01

Revision Date
6/04/12

I hereby certify that this United States public land survey monument record is correct and complete to the best of my knowledge and belief.

Larry D. Hoium Date 6/04/12

Larry D. Hoium, Anoka County Surveyor
Minnesota License Number 18165