

CERTIFICATE OF LOCATION OF GOVERNMENT CORNER

County of Anoka

State of Minnesota

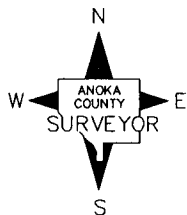
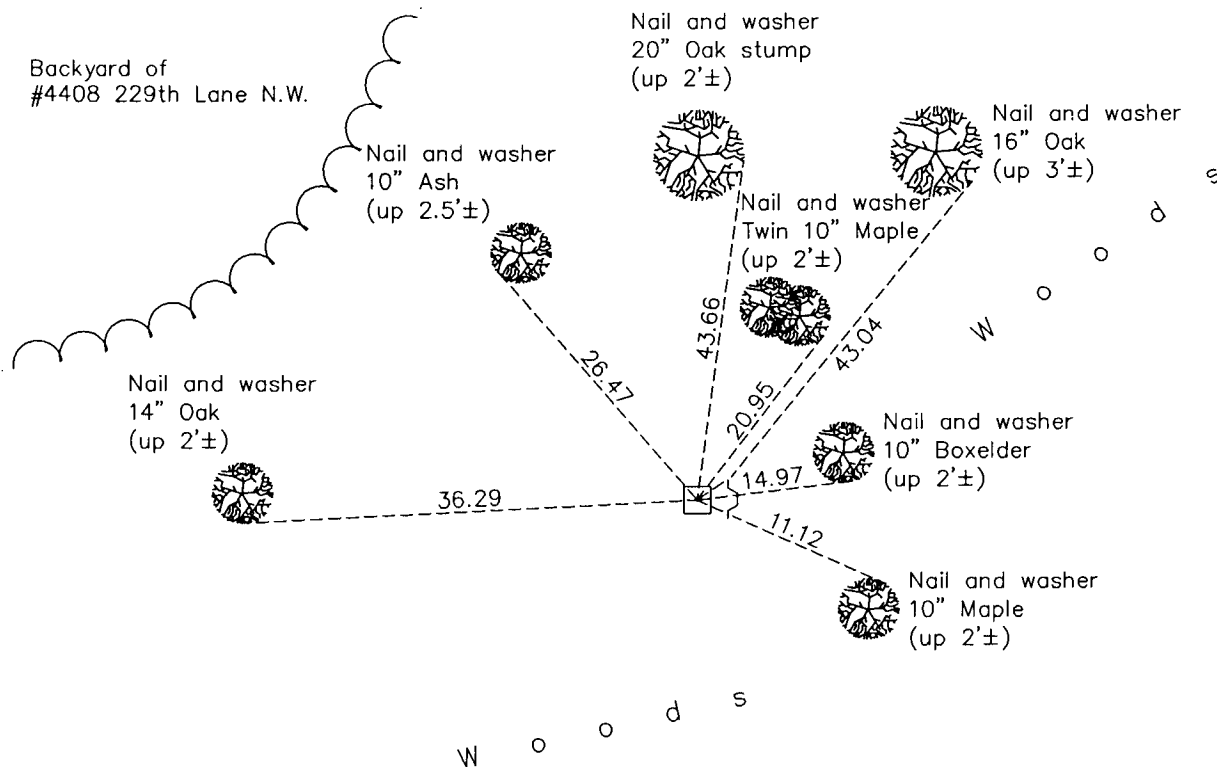
North 1/4 Corner of Sec. 6 Township 33 Range 24

On the 2nd day of September, 1965, the described corner was evidenced by a granite monument

and to perpetuate the location of said corner, at the exact location thereof, a permanent marker was placed consisting of the same granite monument with a sign and post on the east side

AND on the 13th day of January, 2012, said permanent marker was found up 0.3'± and the ties were updated

Updated reference ties are as shown below.



Revision Date
6/04/12

N.A.D. 1983 Coordinates
(1996 Adjustment)

County Project Coordinates	
Northing	<u>227457.8225</u>
Easting	<u>471400.3506</u>
Date	<u>5/08/01</u>

I hereby certify that this United States public land survey monument record is correct and complete to the best of my knowledge and belief.

Larry D. Hoium Date 6/04/12

Larry D. Hoium, Anoka County Surveyor
Minnesota License Number 18165