

# CERTIFICATE OF LOCATION OF GOVERNMENT CORNER

County of Anoka

State of Minnesota

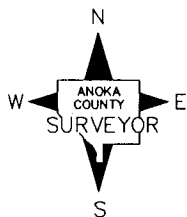
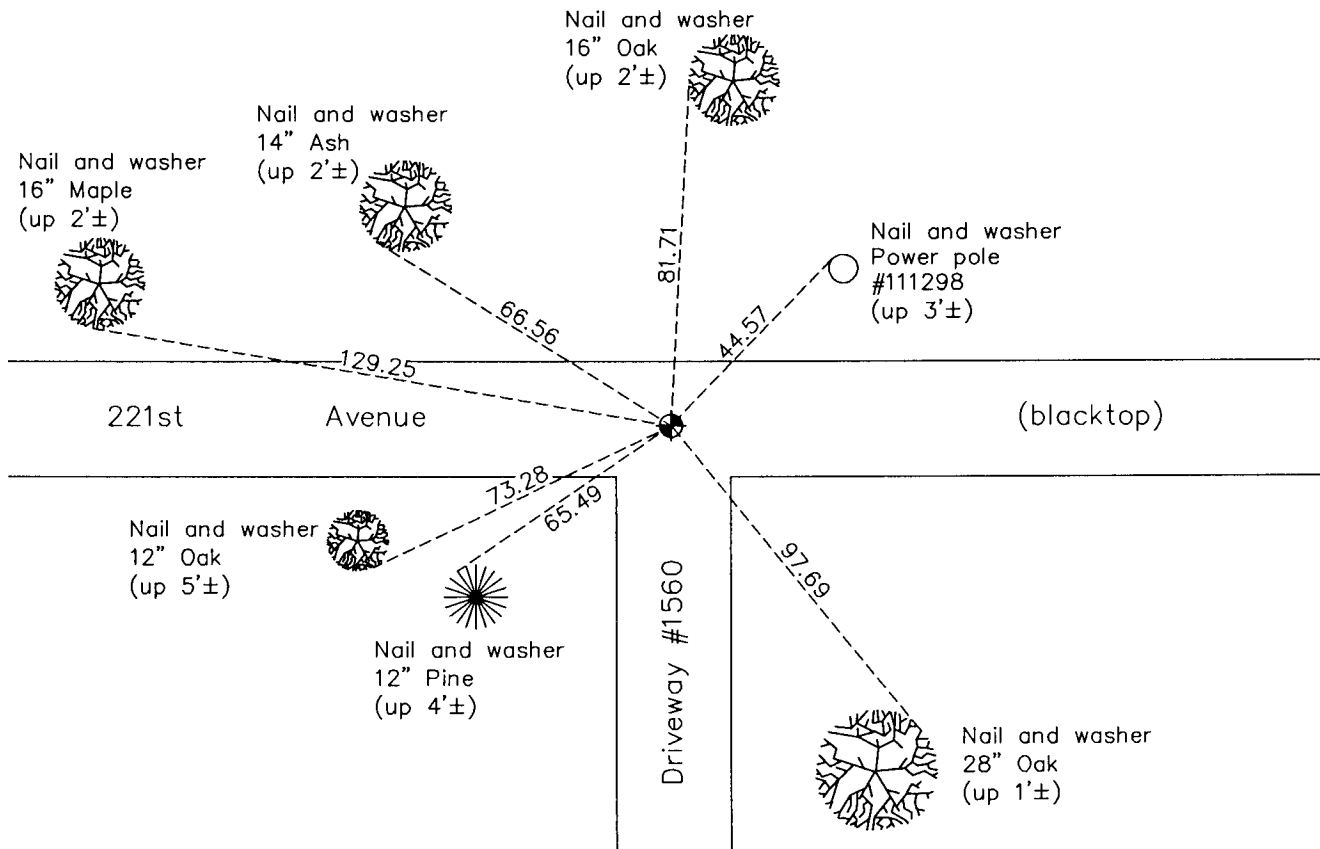
## Northeast Corner of Sec. 10 Township 33 Range 24

On the 5th day of March, 1962, the described corner was evidenced by a granite monument

and to perpetuate the location of said corner, at the exact location thereof, a permanent marker was placed consisting of the same granite monument

AND on the 7th day of September, 2011, said permanent marker was found to be a cast iron monument and the ties were updated

Updated reference ties are as shown below.



Revision Date

12/07/11

N.A.D. 1983 Coordinates  
(1996 Adjustment)

County Project Coordinates	
Northing	222184.4639
Easting	489705.3260
Date	4/20/01

I hereby certify that this United States public land survey monument record is correct and complete to the best of my knowledge and belief.

*Larry D. Hoium* Date 12/07/11

Larry D. Hoium, Anoka County Surveyor

Minnesota License Number 18165