

CERTIFICATE OF LOCATION OF GOVERNMENT CORNER

County of Anoka

State of Minnesota

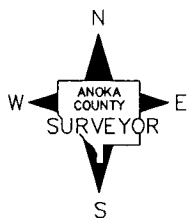
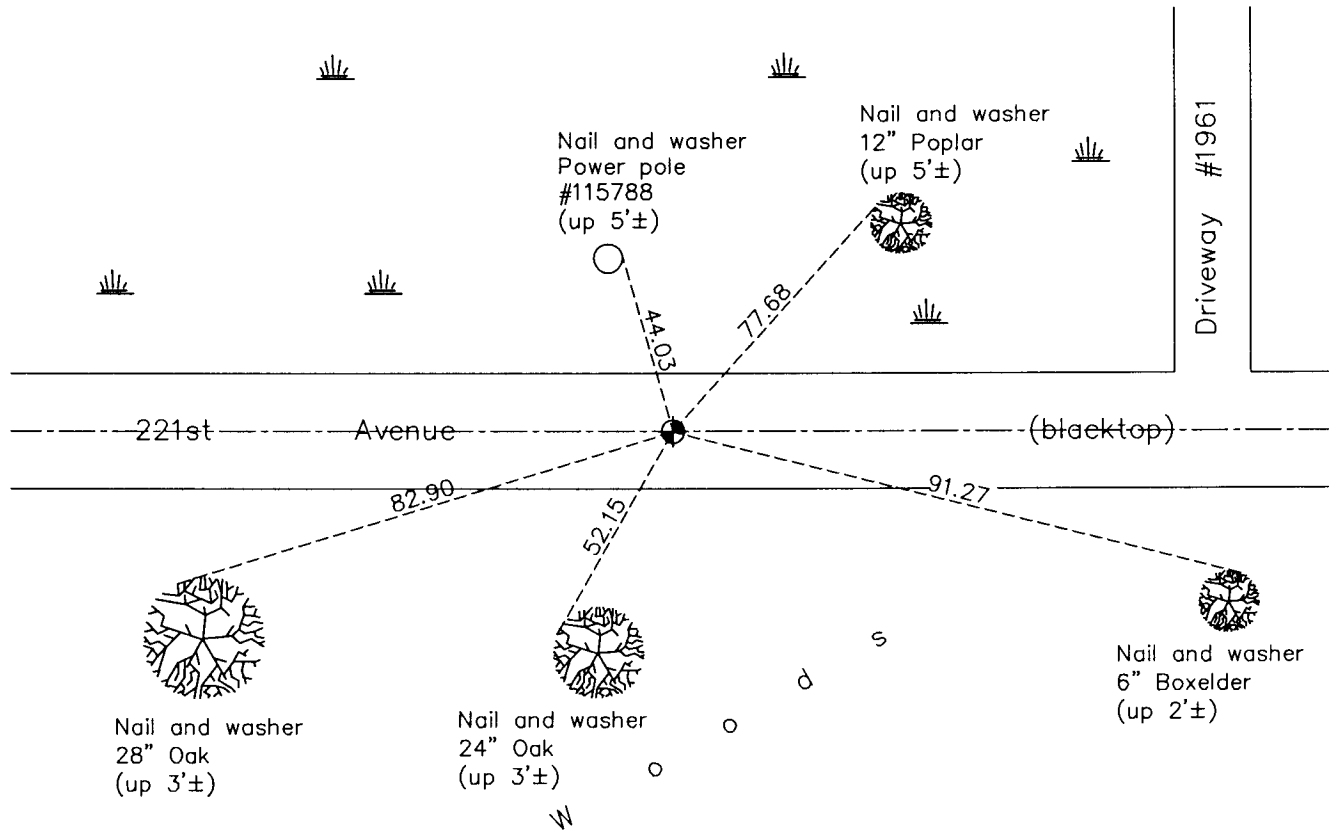
North 1/4 Corner of Sec. 10 Township 33 Range 24

On the 26th day of November, 1963, the described corner was evidenced by a concrete monument

and to perpetuate the location of said corner, at the exact location thereof, a permanent marker was placed consisting of a cast iron monument with a sign and post on the south side of road

AND on the 7th day of September, 2011, said permanent marker was found and the ties were updated. There was no evidence of a sign and post on the south side of the road.

Updated reference ties are as shown below.



Revision Date
12/07/11

N.A.D. 1983 Coordinates
(1996 Adjustment)

County Project Coordinates	
Northing	222183.8263
Easting	487086.8167
Date	4/20/01

I hereby certify that this United States public land survey monument record is correct and complete to the best of my knowledge and belief.

Larry D. Hoium Date 12/07/11

Larry D. Hoium, Anoka County Surveyor

Minnesota License Number 18165