

CERTIFICATE OF LOCATION OF GOVERNMENT CORNER

County of Anoka

State of Minnesota

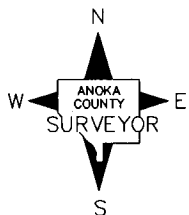
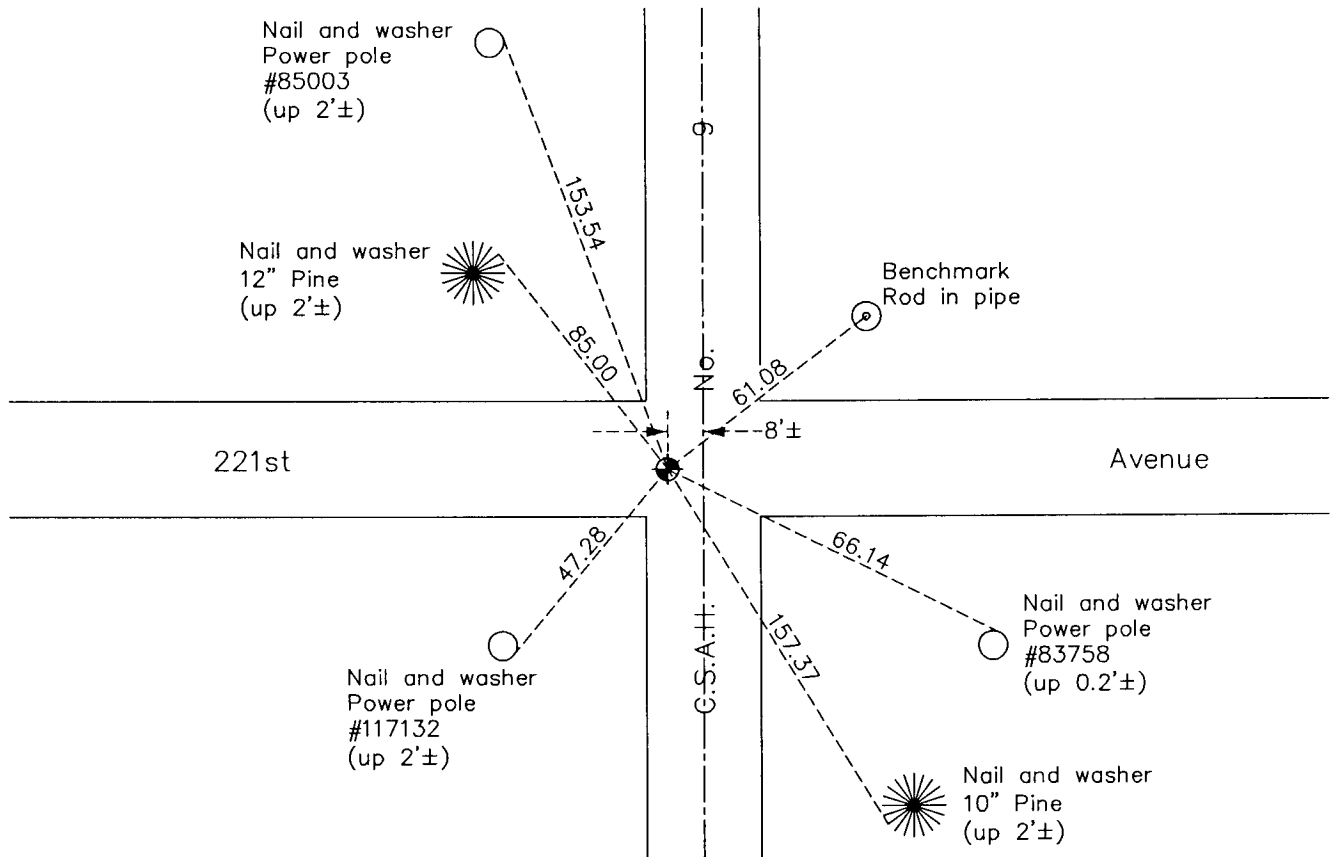
Northwest Corner of Sec. 9 Township 33 Range 24

On the 8th day of May, 1963, the described corner was evidenced by a granite monument

and to perpetuate the location of said corner, at the exact location thereof, a permanent marker was placed consisting of a cast iron monument

AND on the 31st day of January, 2012, said permanent marker was found and the ties
were updated

Updated reference ties are as shown below.



Revision Date
6/05/12

N.A.D. 1983 Coordinates
 (1996 Adjustment)

County Project Coordinates	
Northing	<u>222258.3616</u>
Easting	<u>479185.4642</u>
Date	<u>4/24/01</u>

I hereby certify that this United States public land survey monument record is correct and complete to the best of my knowledge and belief.

Larry D. Hoium Date 6/05/12

 Larry D. Hoium, Anoka County Surveyor
 Minnesota License Number 18165