

CERTIFICATE OF LOCATION OF GOVERNMENT CORNER

County of Anoka

State of Minnesota

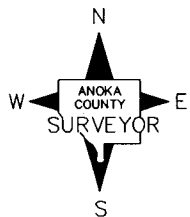
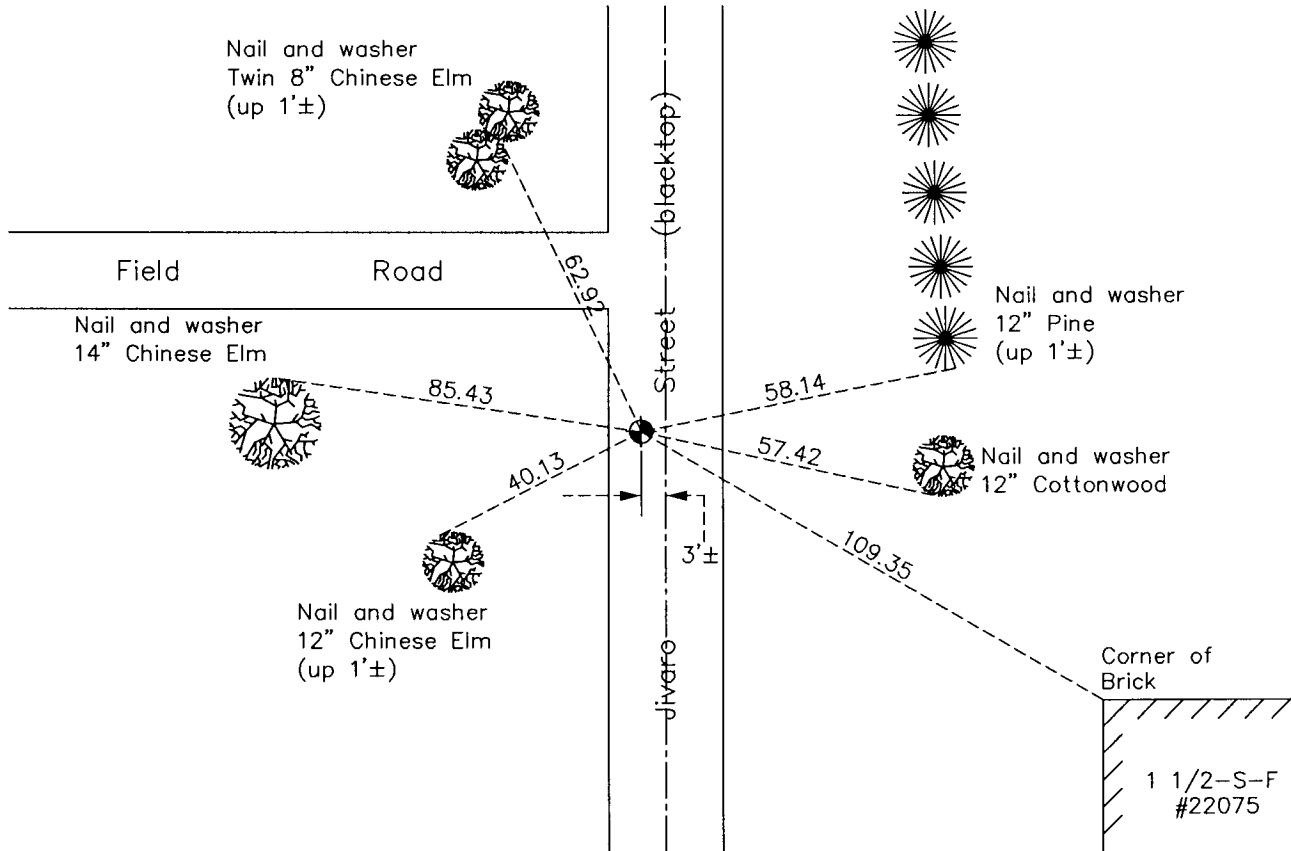
South 1/4 Corner of Sec. 6 Township 33 Range 24

On the 20th day of June, 1967, the described corner was evidenced by area resurvey

and to perpetuate the location of said corner, at the exact location thereof, a permanent marker was placed consisting of a cast iron monument

AND on the 5th day of January, 2012, said permanent marker was found down 0.2'± and the ties were updated

Updated reference ties are as shown below.



N.A.D. 1983 Coordinates
(1996 Adjustment)

County Project Coordinates

Northing 222374.6114

Easting 471299.7129

Date 4/25/01

Revision Date

6/07/12

I hereby certify that this United States public land survey monument record is correct and complete to the best of my knowledge and belief.

Larry D. Hoium Date 6/07/12

Larry D. Hoium, Anoka County Surveyor

Minnesota License Number 18165