

# CERTIFICATE OF LOCATION OF GOVERNMENT CORNER

County of Anoka

State of Minnesota

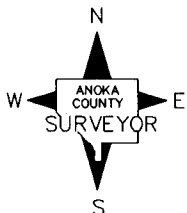
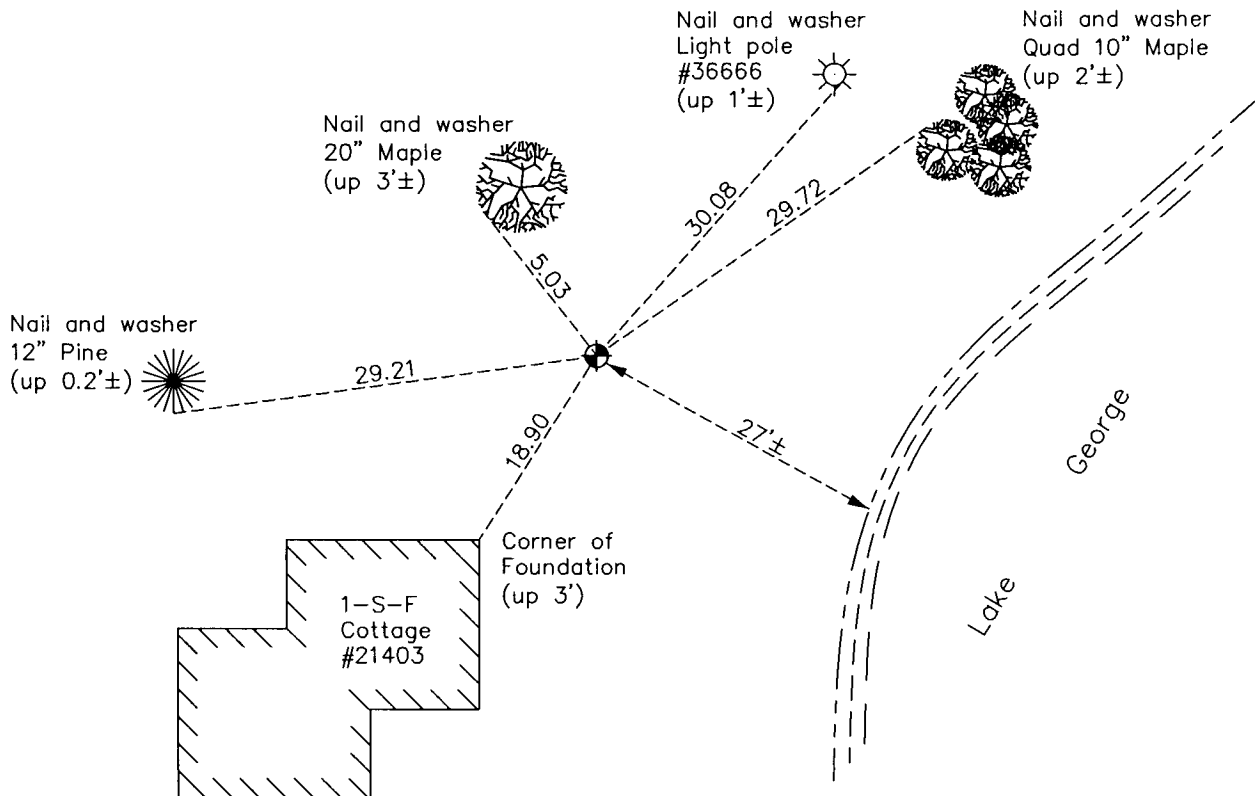
Meander Corner of Sec. 9 Township 33 Range 24  
(on west line of section)

On the 19th day of July, 1961, the described corner was evidenced by a 2" iron  
pipe

and to perpetuate the location of said corner, at the exact location thereof, a permanent marker  
was placed consisting of a cast iron monument

AND on the 20th day of December, 2011, said permanent marker was found down 0.5'± and  
the ties were updated

Updated reference ties are as shown below.



Revision Date  
6/07/12

N.A.D. 1983 Coordinates  
(1996 Adjustment)

County Project Coordinates	
Northing	<u>217595.4063</u>
Easting	<u>479123.1670</u>
Date	<u>5/09/01</u>

I hereby certify that this United States public land survey monument record is correct and complete to the best of my knowledge and belief.

*Larry D. Hoium* Date 6/07/12

Larry D. Hoium, Anoka County Surveyor

Minnesota License Number 18165