

# CERTIFICATE OF LOCATION OF GOVERNMENT CORNER

County of Anoka

State of Minnesota

## Meander Corner of Sec. 10 Township 33 Range 24

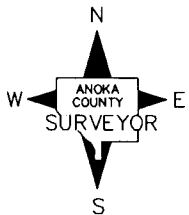
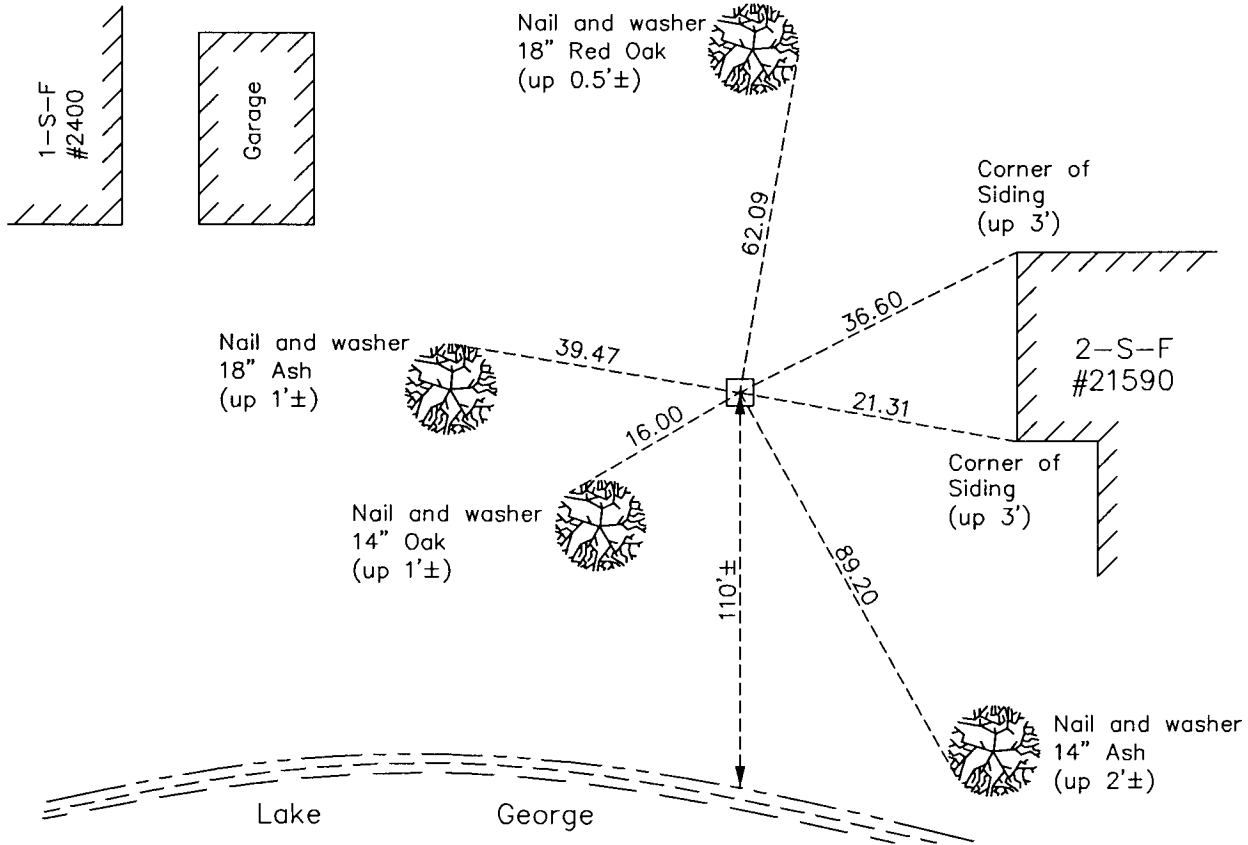
(On west line of section and north of Lake George)

On the 23rd day of August, 1960, the described corner was evidenced by a concrete monument

and to perpetuate the location of said corner, at the exact location thereof, a permanent marker was placed consisting of the same concrete monument

AND on the 10th day of November, 2011, said permanent marker was found broken off at an angle and down 0.2±. Dimple in monument represents location of corner. Ties were updated.

Updated reference ties are as shown below.



N.A.D. 1983 Coordinates  
(1996 Adjustment)

County Project Coordinates	
Northing	218987.2199
Easting	484450.0641
Date	5/11/01

Revision Date  
**6/08/12**

I hereby certify that this United States public land survey monument record is correct and complete to the best of my knowledge and belief.

*Larry D. Hoium* Date 6/08/12  
 Larry D. Hoium, Anoka County Surveyor  
 Minnesota License Number 18165