

# CERTIFICATE OF LOCATION OF GOVERNMENT CORNER

County of Anoka

State of Minnesota

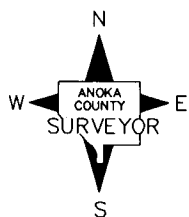
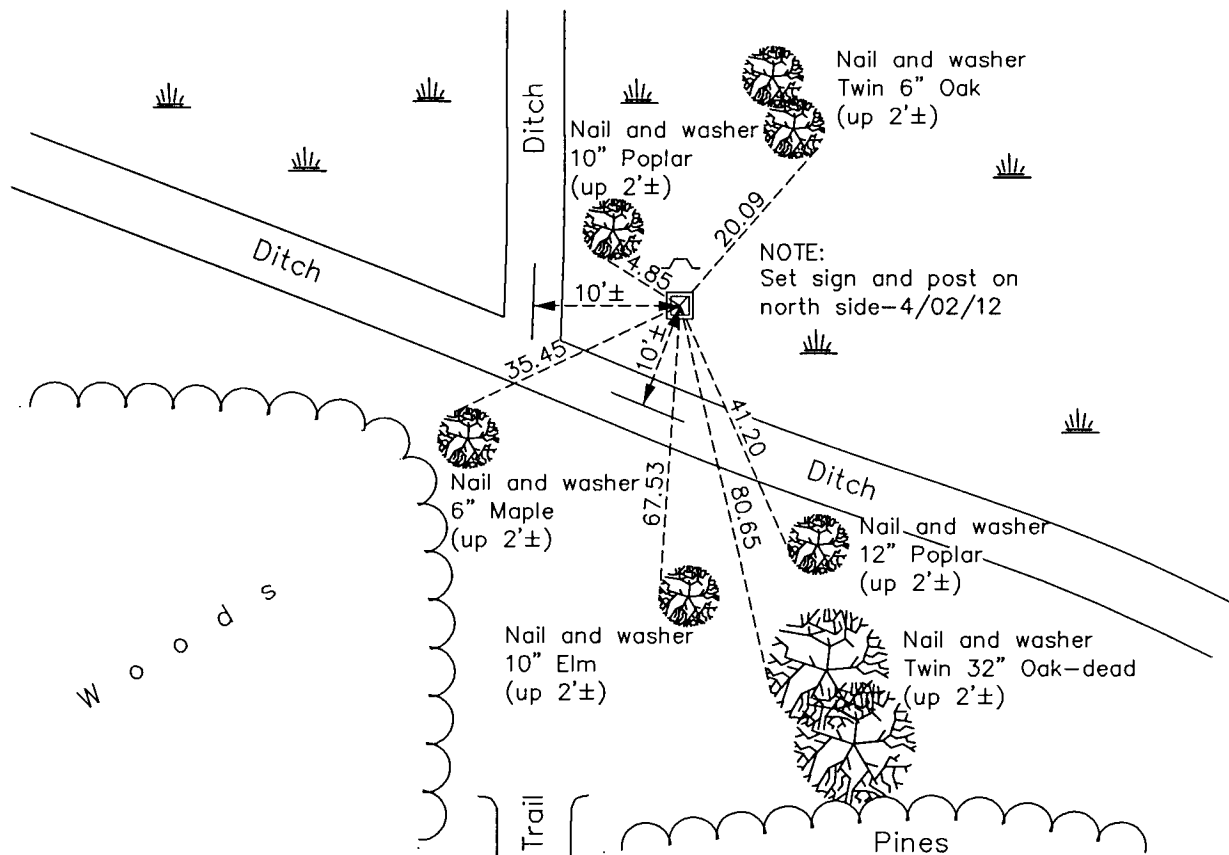
## East 1/4 Corner of Sec. 10 Township 33 Range 24

On the 26th day of November, 1963, the described corner was evidenced by a 4" square concrete monument

and to perpetuate the location of said corner, at the exact location thereof, a permanent marker was placed consisting of the same concrete monument

AND on the 2nd day of May, 2012, said permanent marker was found leaning. Replaced with 2" square steel Telspar monument w/ 'County Surveyor' cap and punchmark. Updated ties.

Updated reference ties are as shown below.



Revision Date  
6/08/12

N.A.D. 1983 Coordinates  
(1996 Adjustment)

County Project Coordinates	
Northing	219547.0572
Easting	489704.8654
Date	11/08/01

I hereby certify that this United States public land survey monument record is correct and complete to the best of my knowledge and belief.

*Larry D. Hoium* Date 6/08/12  
 Larry D. Hoium, Anoka County Surveyor  
 Minnesota License Number 18165