

CERTIFICATE OF LOCATION OF GOVERNMENT CORNER

County of Anoka

State of Minnesota

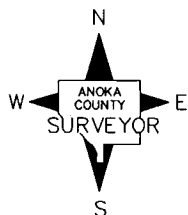
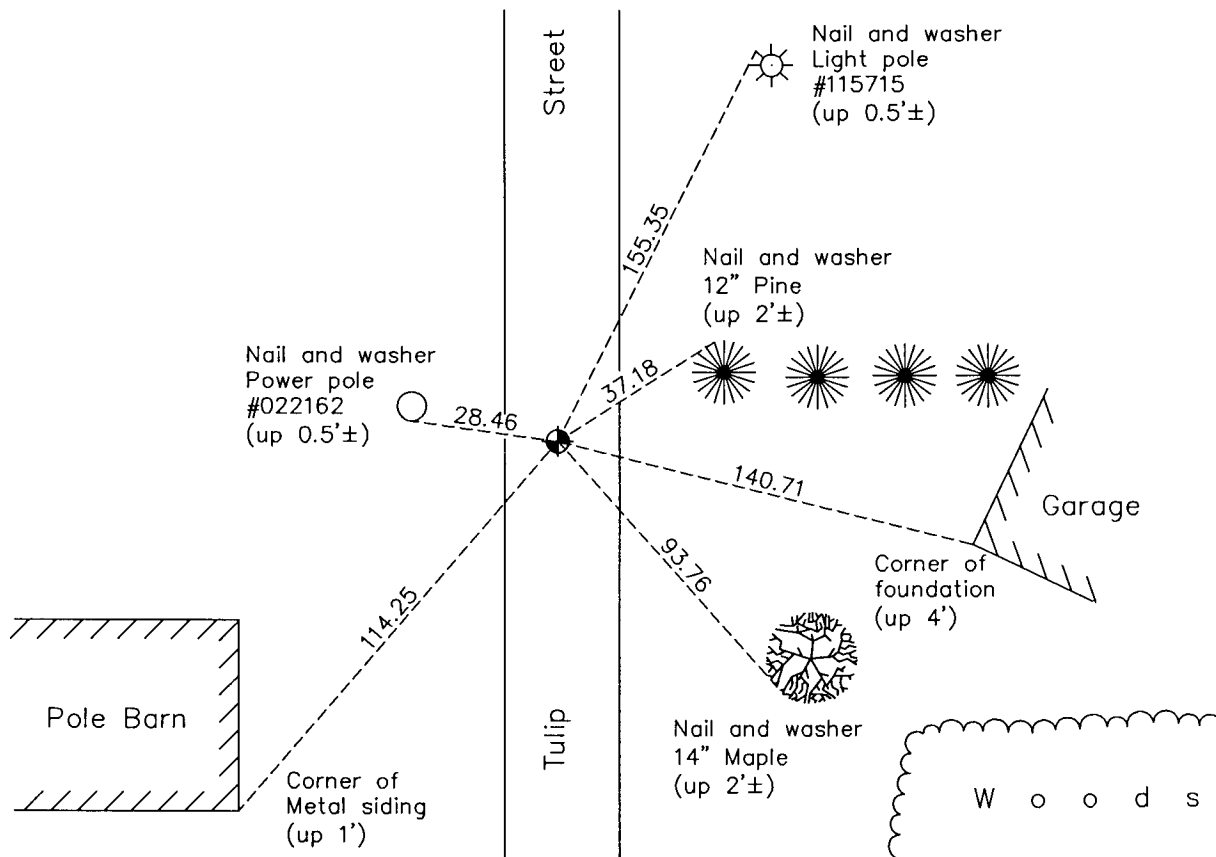
South 1/4 Corner of Sec. 8 Township 33 Range 24

On the 19th day of June, 1961, the described corner was evidenced by an iron bar
inside a 1 1/2" iron pipe

and to perpetuate the location of said corner, at the exact location thereof, a permanent marker
 was placed consisting of a cast iron monument

AND on the 30th day of December, 2011, said permanent marker was found down 0.3'± and
was raised to flush with the surface. Ties were updated.

Updated reference ties are as shown below.



Revision Date
6/11/12

N.A.D. 1983 Coordinates
 (1996 Adjustment)

County Project Coordinates	
Northing	217043.1286
Easting	476514.0646
Date	5/09/01

I hereby certify that this United States public land survey monument record is correct and complete to the best of my knowledge and belief.

Larry D. Hoium Date 6/11/12

Larry D. Hoium, Anoka County Surveyor
 Minnesota License Number 18165