

CERTIFICATE OF LOCATION OF GOVERNMENT CORNER

County of Anoka

State of Minnesota

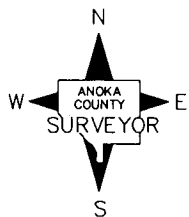
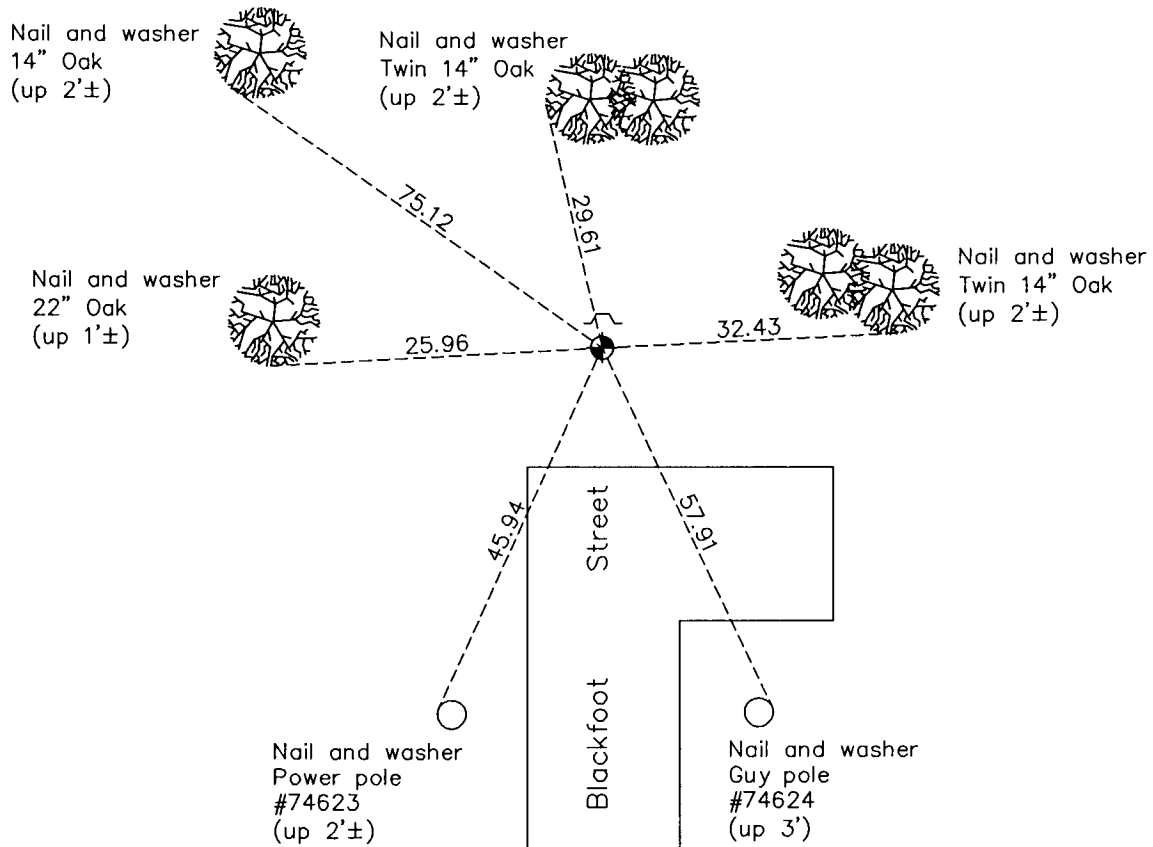
Southwest Corner of Sec. 8 Township 33 Range 24

On the 19th day of June, 1961, the described corner was evidenced by a concrete monument

and to perpetuate the location of said corner, at the exact location thereof, a permanent marker was placed consisting of a cast iron monument with a sign and post on the north side

AND on the 17th day of January, 2012, said permanent marker was found down 0.5'± and the ties were updated

Updated reference ties are as shown below.



Revision Date
6/11/12

N.A.D. 1983 Coordinates
(1996 Adjustment)

County Project Coordinates	
Northing	217123.5989
Easting	473905.3598
Date	3/30/01

I hereby certify that this United States public land survey monument record is correct and complete to the best of my knowledge and belief.

Larry D. Hoium Date 6/11/12
 Larry D. Hoium, Anoka County Surveyor
 Minnesota License Number 18165